

File Help Tools

# Visual Interior Tool™

ActivityBrands

---

**Settings**

Units Feet - Footcandles

**Room Dimensions**

Length [X] 102 ft

Width [Y] 50 ft

Height [Z] 12.6 ft

Workplane 3 ft

Ceiling Type Open

**Room Reflectances**

Ceiling 80 %

Walls 50 %

Floor 20 %

**Criteria**

Illuminance 60 fc

Power Density W/ft²

Quantity

**Constraints**

Spacing X [SC=10.7] ft

Spacing Y [SC=11.4] ft

Rows

Columns

**Calculation Results [A]**

Illuminance 61 fc

Power Density 0.66 W/ft²

Quantity 45

**Spacing Results [A]**

Spacing 11.3 x 10 ft

Arrangement 9 x 5

Outside Spacing X 5.58 ft

Outside Spacing Y 3.06 ft

**Display**

Room  Layout

Show Zonal Cavity Info [+]

---

**Project Information**

A

**Lithonia Lighting**

[A] - MSL 8000LM L/LV XXXX 40K 90CRI

Light Loss Factor 1

Suspension Length 0

Orientation 0

Symbol Shape Rectangular

Symbol Length .44

Symbol Width 3.88

Lamp Quantity 1

Lumens Per Lamp 7057

Wattage 74.7

---

MSL 8000LM L/LV XXXX 40K 90CRI

Copyright 2011-2023, Acuity Brands Lighting, Inc. Visual Interior Tool version: 2.0.3.0. Results generated by this tool are provided for informational purposes only, without any warranty as to accuracy, completeness, reliability or otherwise. The calculated results may be dependent on user provided data or data provided from publicly available sources, and do not take into account all factors and circumstances. The Visual Support Center is available at [support@visual-3d.com](mailto:support@visual-3d.com)

File Help Tools

# Visual Interior Tool™

AcuityBrands

---

**Settings**

Units: Feet - Footcandles ▾

**Room Dimensions:**

Length [X]  ft

Width [Y]  ft

Height [Z]  ft

Workplane  ft

Ceiling Type  ▾

**Room Reflectances**

Ceiling  %

Walls  %

Floor  %

**Criteria**

Illuminance  fc

Power Density  W/ft²

Quantity

**Constraints**

Spacing X [SC=12.2]  ft

Spacing Y [SC=13.1]  ft

Rows

Columns

**Calculation Results [A]**

Illuminance  fc

Power Density  W/ft²

Quantity

**Spacing Results [A]**

Spacing  ft

Arrangement

Outside Spacing X  ft

Outside Spacing Y  ft

**Display**

Dimensions Room  Layout

Show Zonal Cavity Info [+]

---

**Lithonia Lighting**

[A] [ ] - MSL 8000LM L/LV XXXX 40K 90CRI

Light Loss Factor  Rectangular ▾

Suspension Length  Symbol Length  Lumens Per Lamp

Orientation  Symbol Width  Wattage

MSL 8000LM L/LV XXXX 40K 90CRI

Lamp Quantity

Lumens Per Lamp

Wattage

---

Copyright 2011-2023, Acuity Brands Lighting, Inc. Visual Interior Tool version: 2.0.3.0. Results generated by this tool are provided for informational purposes only, without any warranty as to accuracy, completeness, reliability or otherwise. The calculated results may be dependent on user provided data or data provided from publicly available sources, and do not take into account all factors and circumstances. The Visual Support Center is available at [support@visual-3d.com](mailto:support@visual-3d.com)



## FEATURES & SPECIFICATIONS

**INTENDED USE** — The MS Series LED is a linear solution ideal for open-ceiling or suspended applications with mounting heights from 14 to 20 feet. Available as a complete luminaire, based on the time-tested MS housing, the traditional fixture design offers time-saving installation options making it a favorite for contractors. It can be mounted in a continuous row or as a stand-alone unit. Its full-body construction and multiple mounting options adapt to a wide variety of suspended and open-ceiling applications.

Certain chemicals that may exist in end-user locations release airborne contaminants that can impact the integrity and safety of key fixture components. Please refer to the environmental compatibility chart located in the Product Selection Guide and/or the company website to ensure that these chemical interactions are considered when selecting fixtures. For additional information please consult an authorized factory representative. **Certain airborne contaminants can diminish the integrity of acrylic and/or polycarbonate. [Click here for Acrylic/Polycarbonate Compatibility table for suitable uses.](#)**

**CONSTRUCTION** — The full-body housing and optical assembly is precision-formed using 20-gauge steel. The optical assembly ships factory-installed into the housing and utilizes aircraft cable tethers to support the optical assembly during wiring. The lensing integrates seamlessly into the optical housing to provide a sealed chamber to mitigate dust and insect collection. A convenient access plate is located on the back of the channel for access to the wiring compartment.

Finish: High-gloss, baked white enamel finish. Five-stage Iron phosphate pretreatment ensures superior paint adhesion and rust resistance.

**OPTICS** — Optical design distributes the light in the 0-60 deg. zone, which provides better utilization of light on task. Each linear bar is outfitted with premium, anodized MRO 5° aluminum to ensure the highest lumens per watt can be achieved. A diffuse acrylic lens eliminates the pixels to minimize glare and improve uniformity.

**ELECTRICAL** — The MSL luminaire has 94% lumen maintenance at 60,000 hours with an expected life of greater than 100,000 hours. The MSL ships standard with a thermally protected dimming driver that dims down to 5% using 0-10V controls. Optional EldoLED driver allows for flicker-free dimming down to 1%. LEDs are driven to provide optimal lumens per watt and less heat to extend component life. The driver and optical housing are connected with mating plug for easy removal or future upgrade. Optional PLR through-wire harnesses is available for continuous-row installations.

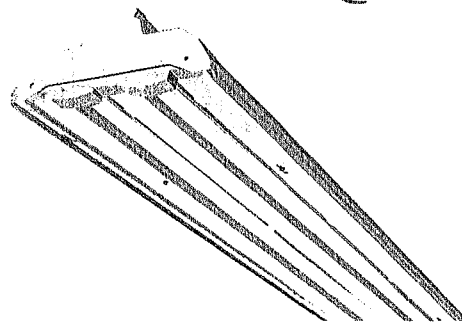
**INSTALLATION** — A variety of mounting arrangements are available including tong hangers, aircraft cables and stems. Suitable for mounting in continuous-row or individual mounting. End caps include knockouts for through wiring and fixture attachment in row-mounting applications.

**LISTINGS** — UL and cUL listed to US and Canadian standards. For use in damp and dry locations with ambient temperatures ranging from -20°C (-4°F) to 30°C (86°F)

**BUY AMERICAN ACT** — Product with the BAA option is assembled in the USA and meets the Buy America(n) government procurement requirements under FAR, DFARS and DOT regulations. Please refer to [www.acuitybrands.com/buy-american](http://www.acuitybrands.com/buy-american) for additional information.

or 10,000

Catalog Number	MSL 8000LM L/LV MVOLT
Notes	GZ10 40K80CRI WH (FIXTURE)
Type	WGMS8Z (WIRE GUARD)



LED Low Bay

# MSL

COMPLETE LUMINAIRE  
4' or 8' Lengths



SPECIFICATIONS				
All dimensions are shown in inches (centimeters) unless otherwise noted.				
Series	Length	Width	Depth	Weight (excludes battery)
TMSL	96 (243.8)	10 (25.4)	3 3/4 (9.52)	26 lbs. (11.8 kg)
MSL	48 (121.9)	10 (25.4)	3 3/4 (9.52)	13 lbs. (5.9 kg)

**WARRANTY** — 5-year limited warranty. This is the only warranty provided and no other statements in this specification sheet create any warranty of any kind. All other express and implied warranties are disclaimed. Complete warranty terms located at: [www.acuitybrands.com/support/warranty/terms-and-conditions](http://www.acuitybrands.com/support/warranty/terms-and-conditions)

**Note:** Actual performance may differ as a result of end-user environment and application. All values are design or typical values, measured under laboratory conditions at 25 °C. Specifications subject to change without notice.

## ORDERING INFORMATION

Lead times will vary depending on options selected. Consult with your sales representative.

**Example:** MSL 4000LM L/LV MVOLT GZ10 40K 80CRI WH

Series	Lumens	Louver	Voltage	Driver	Color temperature	Color rendering index
MSL	4000LM 4000 lumens	SBL Straight blade louver L/LV Less louver	MVOLT 120-277V	GZ10 0-10V dimming EZ1 EldoLED 1-100% dimming	30K 3000 K 35K 3500 K 40K 4000 K 50K 5000 K	80CRI 80 CRI 90CRI 90 CRI
	8000LM 8000 lumens <sup>1</sup>		120 120V			
	10000LM 10000 lumens <sup>1</sup>		277 277V 347 347V <sup>2</sup> 480 480V <sup>2</sup>			
TMSL	8000LM 8000 lumens					
	16000LM 16000 lumens <sup>1</sup>					
	20000LM 20000 lumens <sup>1</sup>					

Options	Finish
E7W Emergency battery pack, 7W (not available for California) <sup>3</sup>	WH White MB Matte black
E10WLCP EM Self-Diagnostic battery pack, 10W Constant Power, Certified in CA Title 20 MAEDBS	
PLR1G Single-circuit, plug-in wiring <sup>4</sup>	
PLR22G Two-circuit alternating plug-in wiring <sup>4</sup>	
PLR1LVG Single-circuit plug-in wiring with low voltage leads <sup>4</sup>	
GLR Internal fast-blow fuse <sup>5</sup>	
CRE Continuous row end; one hole for wiring to row, one flattened knockout to terminate the row <sup>6</sup>	
CRM Continuous row middle; both end plates have holes for row wiring <sup>6</sup>	
BAA Buy America(n) Act Compliant	
<b>Cord sets:</b>	
CS1W 6' white cord-set, straight blade NEMA 5-15P, 120V <sup>5</sup>	
CS11W 6' white cord-set, twist-lock NEMA L7-15P, 277V <sup>5</sup>	
CS93W 600V SE00W white cord, no plug	
<b>Motion sensors:</b>	
LCOZU Aisle motion sensor, pre-wired <sup>5</sup>	
LCHOSZU Aisle motion sensor, pre-wired; programmable dimming <sup>5</sup>	
LCPZU Aisle motion sensor with photocell; pre-wired <sup>5</sup>	
LAOZU 360° motion sensor, pre-wired <sup>5</sup>	
LAHOSZU 360° motion sensor, pre-wired; programmable dimming <sup>5</sup>	
LAPZU 360° motion sensor with photocell, pre-wired <sup>5</sup>	

See footnotes on page 2.

# MSL LED Low Bay

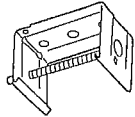
## MOUNTING DATA

For unit or row installation, surface or stem mounting.

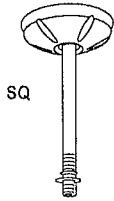
Unit Installation — Minimum of two hangers required.

Row installation — One hanger per channel plus one per row required.

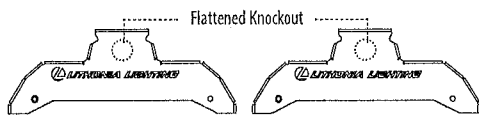
Hanging devices illustrated below.



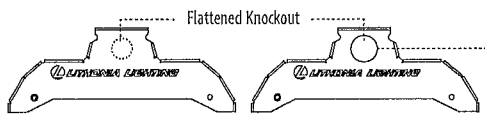
THMSHB J2



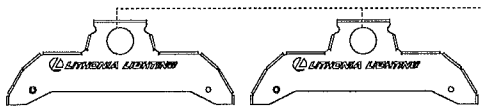
SQ



Blank - Standard option



CRE - Continuous Row End (for beginning of row)

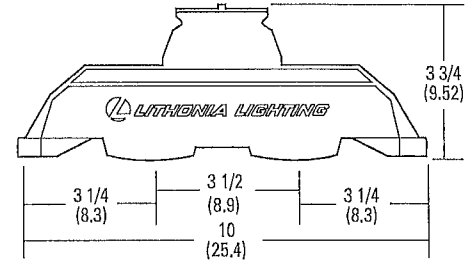
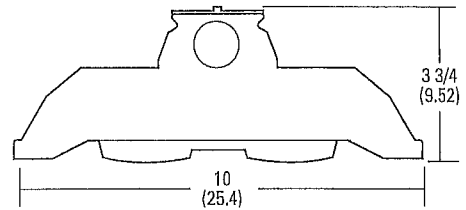


CRM - Continuous Row Mount (for middle fixture)

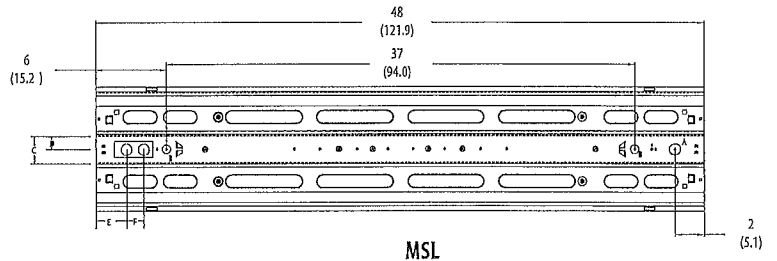
1-1/8" Hole

## DIMENSIONS

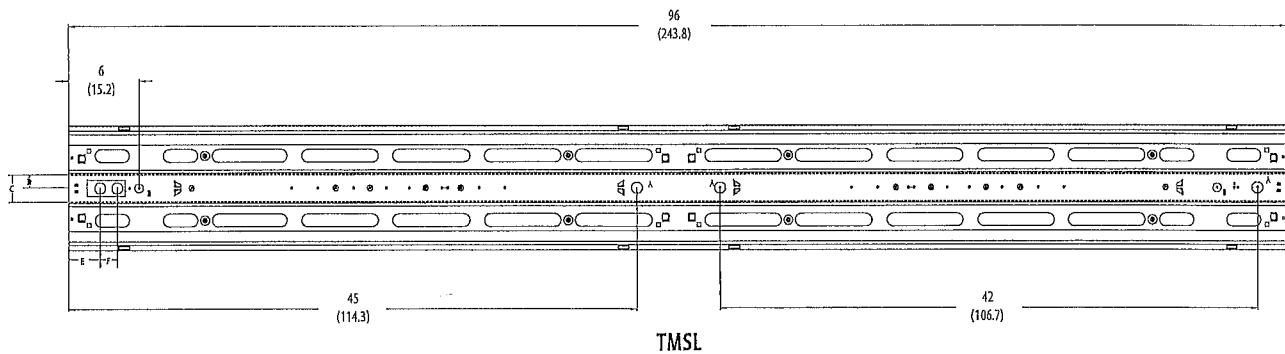
All dimensions are in inches (centimeters) unless otherwise indicated.



- A = 7/8 (2.2) KO
- B = 3/4 (1.9) KO
- C = 2-3/8 (6.0)
- D = 1-1/4 (3.2)
- E = 2-3/8 (6.0)
- F = 1-3/8 (3.5)



MSL



TMSL

## PHOTOMETRICS

See [www.lithonia.com](http://www.lithonia.com).

**LSXR - Fixture Mount Sensor** (see [www.sensorswitch.com](http://www.sensorswitch.com) for additional information)

- Four interchangeable lenses.
- Integrated mounting bracket drops lens down 3" from chase nipple.
- Single or dual relay versions — designed with robust protection from the harsh switching requirements of T5 and LED loads.
- Photocell and 0-10VDC dimming options.
- No PIR field calibration or sensitivity adjustments required.

LSXR configuration	Comparable CMRB sensor	Old style sensor nomenclature
For shortest lead times use one of the following LSXR configurations		
LCOZU	CMRB 50	MSI
LCHOSZU	CMRB 50 D	MSID
LCPZU	CMRB 50 P	MSIPED
LAOZU	CMRB 6	MSB60
LAHOSZU	CMRB 6 D	MSB60D
LAPZU	CMRB 6 P	MSB60PED

**SELECTIONS BELOW WILL EXTEND ORDER LEAD TIME.  
CONSULT YOUR SALES REPRESENTATIVE FOR DETAILS.**

**SINGLE RELAY**

**ORDERING INFORMATION**

Lead times will vary depending on options selected. Consult with your sales representative.

**Example: LAHOSZU**

Series	Lens option	Dimming/Photocell	Max. dim level	Min. dim level	Temp/Humidity	Default time delay
L LSXR passive infrared indoor occupancy sensor	A High mount, 360°	O None <sup>1</sup>	0 10 VDC	5 Minimum dimming level of ballast	Z None	I 30 seconds
	B Low mount, 360°	H High/low occupancy operation	9 9 VDC	1 1 VDC	T Low temperature	D 2.5 minutes
	C High mount aisleway	P Switching photocell (on/off)	8 8 VDC	2 2 VDC	R 7.5 minutes	X 5 minutes
		M Dimming and switching photocell	7 7 VDC	3 3 VDC	U 10 minutes (with minimum 15 minutes on time)	R 7.5 minutes
		G Dimming and switching photocell with high/low occupancy operation	4 4 VDC	V 15 minutes	4 4 VDC	W 20 minutes
			5 5 VDC	Y 30 minutes	5 5 VDC	
			6 6 VDC		6 6 VDC	

**Notes**

- 1 Dimming level fields not required when this option is chosen.

**DUAL RELAY (Available with 120, 277, and 347V only)**

**ORDERING INFORMATION**

Lead times will vary depending on options selected. Consult with your sales representative.

**Example: LA2KZU**

Series	Lens option	Poles	Operating mode	Temp/Humidity	Default time delay
L LSXR passive infrared indoor occupancy sensor	A High mount, 360°	2 Dual relay	J None	Z None	I 30 seconds
	B Low mount, 360°		K Alternating off relays (promotes even lamp wear)	T Low temperature	D 2.5 minutes
	C High mount aisleway		O Alternating off relays w/photocell	X 5 minutes	
			P Switching photocell (on/off)	R 7.5 minutes	
			E Photocell on/off (pole 1 only)	U 10 minutes (with minimum 15 minutes on time)	
			F Photocell on/off - both poles (dual set-point)	V 15 minutes	
W 20 minutes					
Y 30 minutes					

**Example: LENS 50 J100**

Replacement lenses: Order as separate catalog number		
Series	Lens type	Package quantity
Lens	6 High mount 360°	U Unit
	10 Low mount 360°	J10 10-pack
	50 High mount aisleway	J100 100-pack

# MSL LED Low Bay

Accessories: Order as separate catalog number.	
ZACVH M100	Adjustable 10' aircraft cable with Y hanger (1 pair)
MSHBAC_	Adjustable aircraft cable system (specify 36, 72 or 120 inches) <sup>7</sup>
MSHBACF_	Adjustable aircraft cable system with power feed (specify length as 36, 72 or 120 inches) (three-wire cable) <sup>7</sup>
MSHBAC2F_	Adjustable aircraft cable system with power feed (specify length as 36, 72 or 120 inches) (four-wire cable) <sup>7</sup>
SQ_	Swivel stem hanger (specify length in 2" increments up to 48")
THMSHB J2	Tong hangers (1 pair)
WGMS8Z	4' wire guard, zinc coated (offers light-duty protection) <sup>8</sup>
HC36 M12	Hanger chain, 36" (1 pair)

### Notes

- 1 Not available with EZ1 driver.
- 2 347 and 480V utilize a step-down transformer.
- 3 Must specify voltage, not available with 347V. Not available with CS1W, CS11W or any cord/plug set. Must be suspended a minimum of 12In from ceiling.
- 4 Requires CRE or CRM option.
- 5 Must specify voltage.
- 6 Not available with sensor options.
- 7 One cable per package.
- 8 Order 2 for tandem fixtures.

## OPERATIONAL DATA

Lumen package	Ambient rating (120V - 277V)	Driver compatibility	Delivered lumens						Watts		Comparable light source
			3500 K CCT, 80 CRI	4000 K CCT, 80 CRI	5000 K CCT, 80 CRI	3500 K CCT, 90 CRI	4000 K CCT, 90 CRI	5000 K CCT, 90 CRI	80 CRI	90 CRI	
MSL 4000	-4°F to 86°F (-20°C to -30°C)	EZ1 and GZ10	3,625	3,636	3,724	2,929	2,939	3,010	29	29	1-lamp 54T5HO, 2-lamp 32T8, 70-100W HID
MSL 8000	-4°F to 86°F (-20°C to -30°C)	GZ10	8,706	8,733	8,945	7,035	7,057	7,228	75	75	2-lamp 54T5HO, 4-lamp 32T8, 150-175 HID
MSL 10000	-4°F to 86°F (-20°C to -30°C)	GZ10	9,768	9,798	10,036	7,893	7,918	8,110	86	86	3-lamp 54T5HO, 4-lamp 32T8, 150-175 HID
TMSL 8000	-4°F to 86°F (-20°C to -30°C)	EZ1 and GZ10	7,250	7,273	7,450	5,859	5,877	6,020	58	58	2-lamp 54T5HO, 4-lamp 32T8, 150-175 HID
TMSL 16000	-4°F to 86°F (-20°C to -30°C)	GZ10	17,412	17,467	17,890	14,070	14,115	14,457	149	149	4-lamp 54T5HO, 8-lamp 32T8, 250 HID
TMSL 20000	-4°F to 86°F (-20°C to -30°C)	GZ10	19,535	19,597	20,072	15,786	15,836	16,220	181	181	6-lamp 54T5HO, 8-lamp 32T8, 250-315 HID

## PROJECTED LUMEN MAINTENANCE

Operating hours	0	10,000	20,000	30,000	40,000	50,000	60,000	100,000
Lumen maintenance factor	1	0.99	0.98	0.97	0.96	0.95	0.94	0.91