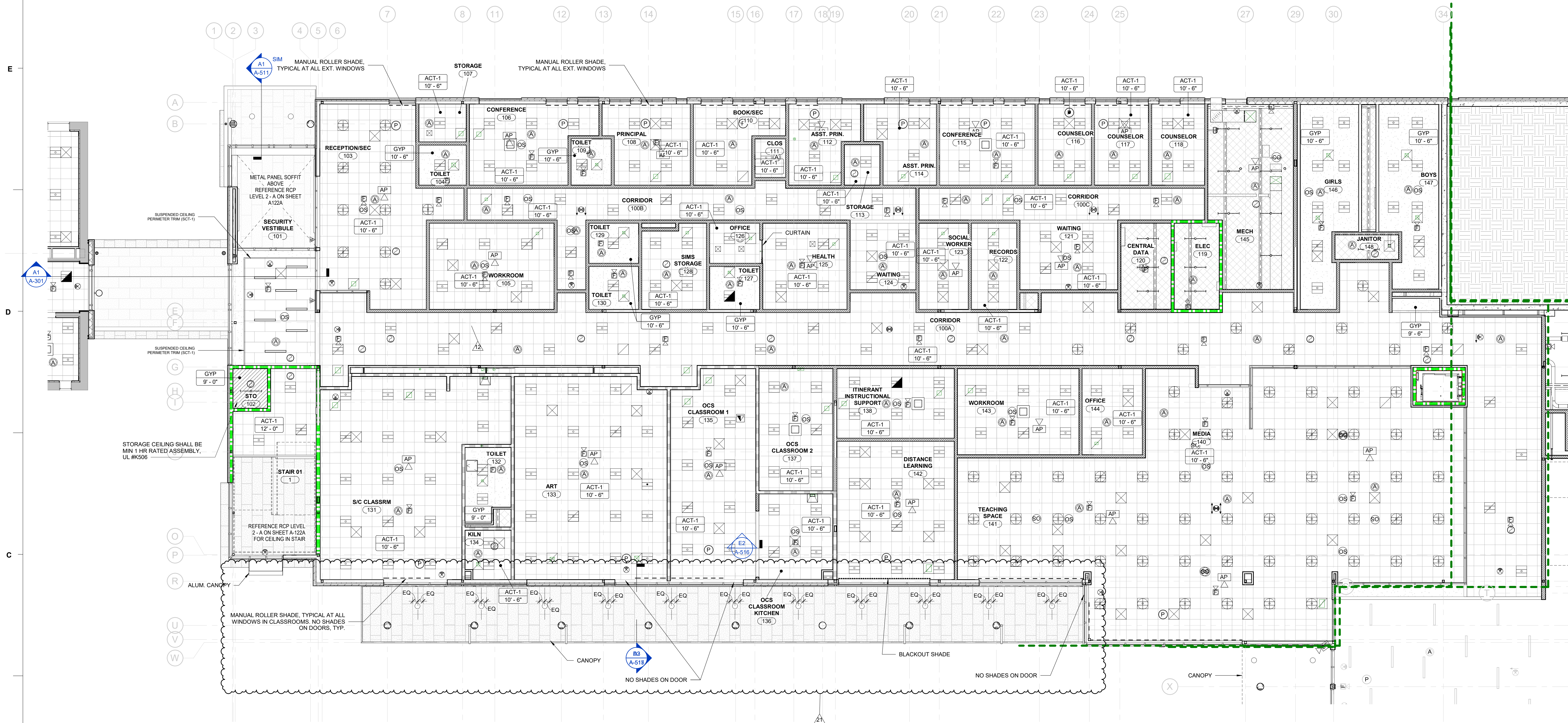


REVISIONS:		
No.	Description	Date
12	BULLETIN #5	5-18-20
13	BULLETIN #6	6-17-20
21	BULLETIN #14	4-16-21

PROJECT: PFA/1956/LS3P: 3201-186120  
DATE: JANUARY 6, 2020

RCP LEVEL 1 - A

A-121A



A1 REFLECTED CEILING PLAN - LEVEL 1 - AREA A  
1/8" = 1'-0"

RCP LEGEND

ACT-1 2X2 LAY-IN CEILING PANEL	GYPSUM BOARD
ACT-2 2X4 LAY-IN VINYL FACED CEILING PANEL	GYPSUM BOARD 2HR RATED; UL K506
ACT-3 2X4 LAY-IN CEILING PANEL W/ GRID ON RUNNING BOND PATTERN	EXPOSED STRUCTURE - PAINTED, PNT-5 U.O.N.
ACT-4 2X2 LAY-IN CEILING PANEL SOUND ABSORPTIVE - 0.95 NRC	1'-0" HEIGHT (FEET, INCHES) ABOVE FINISHED FLOOR, 9'-0" U.O.N.
ACT-5 2X2 LAY-IN CEILING PANEL SOUND REFLECTIVE - 0.60 NRC	MANUAL ROLLER SHADE
AP CEILING ACCESS PANEL COORDINATE LOCATION WITH MECHANICAL CONTRACTOR	BLACK OUT SHADE

NOTE: SEE MECHANICAL, ELECTRICAL,  
PLUMBING, AND AV DRAWINGS FOR ALL  
OTHER SYMBOLS NOT IN THIS LEGEND

RATED WALLS & PARTITION LEGEND

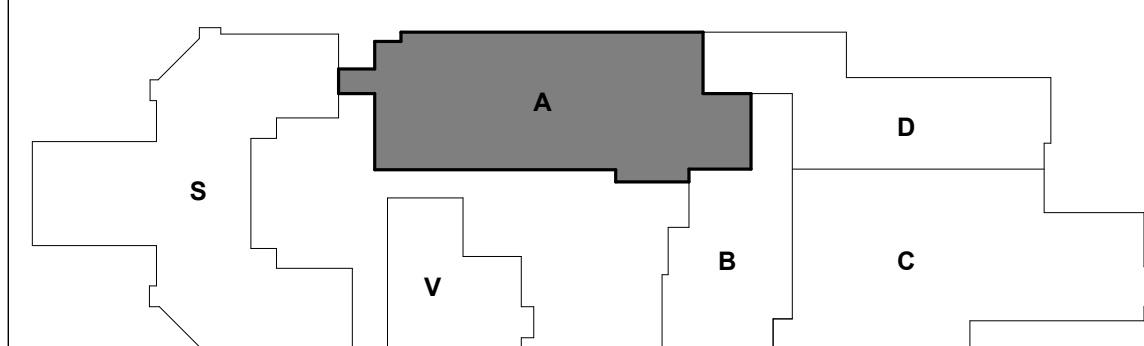
1 HR. RATED FIRE BARRIER TO DECK
2 HR. RATED FIRE WALL
SMOKE PARTITION TO DECK
NON-RATED PARTITION TO CEILING
NON-RATED PARTITION TO DECK

NOTE: SEE SHEET A-003 FOR CONSTRUCTION OF PARTITION TYPES.

REFLECTED CEILING PLAN SHEET NOTES

- SEE SHEET A-003 FOR WALL TYPES AND HEIGHT OF WALLS ABOVE CEILING.
- SEE SHEET A-720 FOR INTERIOR FINISH SCHEDULE WITH DESCRIPTIONS OF CEILING TYPES NOTED HERE.
- SEE SHEET A-1230 FOR SEISMIC CEILING CONSTRUCTION DETAILS.
- DIMENSIONS ARE TO FACE OF STUD OR MASONRY.
- EXTEND PERIMETER WALLS AND FINISH TO STRUCTURE ABOVE AT EXPOSED STRUCTURE AREAS. PAINT ALL EXPOSED DUCTWORK, PIPING, HANGERS, ETC.
- ALL CEILINGS TO BE 9'-0" AFF. UNO. CEILING HEIGHTS SHOWN ON THE REFLECTED CEILING PLANS ARE NON-TYPICAL AND SPECIFIC TO THE AREA INDICATED. REFER TO INTERIOR ELEVATIONS FOR THE HEIGHTS OF SOFFITS ABOVE CASEWORK.
- CEILING GRIDS/TILES TO BE CENTERED IN ALL ROOMS UNLESS NOTED OTHERWISE. PARTIAL TILES AT ROOM PERIMETERS SHALL NOT BE LESS THAN 6" IN EITHER DIMENSION.
- PERIMETER TRACK FOR ALL ACOUSTICAL CEILING GRIDS TO BE 2" WIDE INSTALLED IN ACCORDANCE WITH IBC AND CISCA GUIDELINES.
- ELECTRICAL FIXTURES AND MECHANICAL DIFFUSERS ARE SHOWN FOR POSITIONING IN FINISH CEILING SYSTEM AND GENERAL COORDINATION ONLY. SEE MECHANICAL AND ELECTRICAL DRAWINGS FOR FIXTURE AND DIFFUSER TYPES, WALL MOUNTED FIXTURES AND INSTALLATION OF FIXTURES IN SPACES WITHOUT CEILINGS.
- CENTER LIGHTS, DIFFUSERS, SMOKE DETECTORS, SPEAKERS, GENERAL ALARM SPEAKERS/STROBES & MISC DEVICES IN CEILING TILES WHERE THEY ARE LOCATED. ALIGN MULTIPLE ITEM CENTER OR EDGES. CENTER EXIT SIGNS OVER EXIT DOORS.
- ALL SINGLE LIGHT FIXTURES SHALL BE CENTERED IN THE CEILING IN ROOM IN WHICH THEY OCCUR.
- LIGHTS LOCATED IN STAIRS SHALL OCCUR AT EACH FLOOR AND INTERMEDIATE LANDINGS.
- LOCATE MECHANICAL GRILLES AND DIFFUSERS SHOWN IN CORNERS OR NEAR WALL TO 12" OFF WALLS. UNO.
- COORDINATE LOCATIONS OF ALL FIXTURES NOT INDICATED WITH LAYOUT INDICATED ON THIS SHEET. SEE MECHANICAL AND ELECTRICAL DRAWINGS FOR MOUNTING LOCATIONS OF ITEMS WHERE NO CEILING IS INDICATED.
- SEE MECHANICAL FLOOR PLANS FOR EXTENT OF EXPOSED DUCTWORK IN EXPOSED STRUCTURE AREAS WITHOUT CEILINGS.
- PROVIDE AND INSTALL 12"x12" ACCESS PANELS IN GYPSUM BOARD CEILING WHERE REQUIRED FOR ACCESS TO DAMPER CONTROLS, DUCT-MOUNTED SMOKE DETECTORS, PLUMBING VALVES, ETC. COORDINATE LOCATIONS AND VERIFY SIZES WITH PLUMBING AND MECHANICAL.
- LOCATE SPRINKLER HEADS IN THE CENTER OF THE CEILING TILE. ALIGN CORRIDOR SPRINKLER HEADS IN THE SAME LINE PARALLEL TO THE WALL WITHIN EACH SPECIFIC CEILING CONSTRUCTION.
- SPRINKLER HEADS, OTHER THAN CONCEALED, SHALL BE RECESSED (CENTER IN CEILING TILE).
- ALL GWB CEILINGS TO RECEIVE CONCEALED SPRINKLER HEADS.

KKEY PLAN



TRUE  
NORTH



REVISIONS:		
No.	Description	Date
2	CONSTRUCTION DOCUMENTS	1-6-20
5	Addendum 3	2-5-20
13	BULLETIN #6	6-17-20
21	BULLETIN #14	4-16-21

PROJECT: PFA: 1956 / LS3P: 3201-186120  
DATE: JANUARY 6, 2020

RCP LEVEL 2 - A

A-122A



(A1) REFLECTED CEILING PLAN - LEVEL 2 - AREA A  
1/8" = 1'-0"

RCP LEGEND

ACT-1 2X2 LAY-IN CEILING PANEL	GYPSUM BOARD
ACT-2 2x4 LAY-IN VINYL FACED CEILING PANEL	GYPSUM BOARD 2HR RATED; UL K508
ACT-3 2x4 LAY-IN CEILING PANEL W/ GRID ON RUNNING BOND PATTERN	EXPOSED STRUCTURE - PAINTED, PNT-5 U.O.N.
ACT-4 2x2 LAY-IN CEILING PANEL SOUND ABSORPTIVE - 0.95 NRC	HEIGHT (FEET, INCHES) ABOVE FINISHED FLOOR, 9'-0" U.N.O.
ACT-5 2x2 LAY-IN CEILING PANEL SOUND REFLECTIVE - 0.60 NRC	MANUAL ROLLER SHADE
AP CEILING ACCESS PANEL COORDINATE LOCATION WITH MECHANICAL CONTRACTOR	BLACK OUT SHADE

NOTE: SEE MECHANICAL, ELECTRICAL,  
PLUMBING, AND AV DRAWINGS FOR ALL  
OTHER SYMBOLS NOT IN THIS LEGEND

RATED WALLS & PARTITION LEGEND

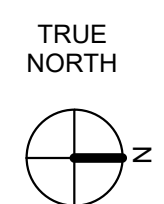
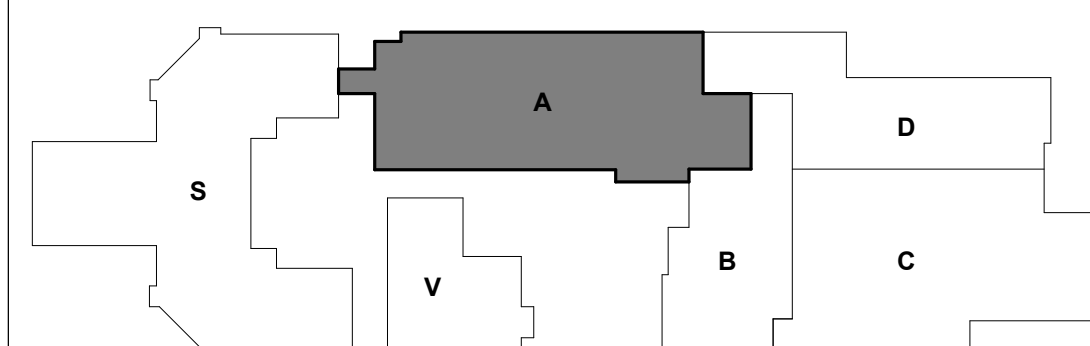
1 HR. RATED FIRE BARRIER TO DECK
2 HR. RATED FIRE WALL
SMOKE PARTITION TO DECK
NON-RATED PARTITION TO CEILING
NON-RATED PARTITION TO DECK

NOTE: SEE SHEET A-003 FOR CONSTRUCTION OF PARTITION TYPES.

REFLECTED CEILING PLAN SHEET NOTES

- SEE SHEET A-003 FOR WALL TYPES AND HEIGHT OF WALLS ABOVE CEILING.
- SEE SHEET A-720 FOR INTERIOR FINISH SCHEDULE WITH DESCRIPTIONS OF CEILING TYPES NOTED HERE.
- SEE SHEET A-123C FOR SEISMIC CEILING CONSTRUCTION DETAILS.
- DIMENSIONS ARE TO FACE OF STUD OR MASONRY.
- EXTEND PERIMETER WALLS AND FINISH TO STRUCTURE ABOVE AT EXPOSED DUCTWORK, PIPING, HANGERS, ETC.
- ALL CEILINGS TO BE 9'-0" AFF, UNO. CEILING HEIGHTS SHOWN ON THE REFLECTED CEILING PLANS ARE NON-TYPICAL AND SPECIFIC TO THE AREA INDICATED. REFER TO INTERIOR ELEVATIONS FOR THE HEIGHTS OF SOFFITS ABOVE CASEWORK.
- CEILING GRID/TILES TO BE CENTERED IN ALL ROOMS UNLESS NOTED OTHERWISE. PARTIAL TILES AT ROOM PERIMETERS SHALL NOT BE LESS THAN 6" IN EITHER DIMENSION.
- PERIMETER TRACK FOR ALL ACOUSTICAL CEILING GRIDS TO BE 2" WIDE INSTALLED IN ACCORDANCE WITH IBC AND CISCA GUIDELINES.
- ELECTRICAL FIXTURES AND MECHANICAL DIFFUSERS ARE SHOWN FOR POSITIONING IN FINISH CEILING SYSTEM AND GENERAL COORDINATION ONLY. SEE MECHANICAL AND ELECTRICAL DRAWINGS FOR FIXTURE AND DIFFUSER TYPES, WALL MOUNTED FIXTURES AND INSTALLATION OF FIXTURES IN SPACES WITHOUT CEILINGS.
- CENTER LIGHTS, DIFFUSERS, SMOKE DETECTORS, SPEAKERS, GENERAL ALARM SPEAKERS/STROBES & MISC DEVICES IN CEILING TILES WHERE THEY ARE LOCATED.
- ALL SINGLE LIGHT FIXTURES SHALL BE CENTERED IN THE CEILING IN ROOM IN WHICH THEY OCCUR.
- LIGHTS LOCATED IN STAIRS SHALL OCCUR AT EACH FLOOR AND INTERMEDIATE LANDINGS.
- LOCATE MECHANICAL GRILLES AND DIFFUSERS SHOWN IN CORNERS OR NEAR WALL TO 12" OFF WALLS, UNO.
- COORDINATE LOCATIONS OF ALL FIXTURES NOT INDICATED WITH LAYOUT INDICATED ON THIS SHEET. SEE MECHANICAL AND ELECTRICAL DRAWINGS FOR MOUNTING LOCATIONS OF ITEMS WHERE NO CEILING IS INDICATED.
- SEE MECHANICAL FLOOR PLANS FOR EXTENT OF EXPOSED DUCTWORK IN EXPOSED STRUCTURE AREAS WITHOUT CEILINGS.
- PROVIDE AND INSTALL 12"x12" ACCESS PANELS IN GYPSUM BOARD CEILINGS WHERE REQUIRED FOR ACCESS TO DAMPER CONTROLS, DUCT-MOUNTED SMOKE DETECTORS, PLUMBING VALVES, ETC. COORDINATE LOCATIONS AND VERIFY SIZES WITH PLUMBING AND MECHANICAL.
- LOCATE SPRINKLER HEADS IN THE CENTER OF THE CEILING TILE. ALIGN CORRIDOR SPRINKLER HEADS IN THE SAME LINE PARALLEL TO THE WALL WITHIN EACH SPECIFIC CEILING CONSTRUCTION.
- SPRINKLER HEADS, OTHER THAN CONCEALED, SHALL BE RECESSED (CENTER IN CEILING TILE).
- ALL GWB CEILINGS TO RECEIVE CONCEALED SPRINKLER HEADS.

KEY PLAN





$$1/8'' = 1'-0''$$

No.	Description	Date
13	BULLETIN #6	6-17-20
21	BULLETIN #14	4-16-21

PROJECT: PFA: 1956 / LS3P: 3201-18  
DATE: JANUARY 6, 2020

RCP LEVEL 2 - D

# A-122D