

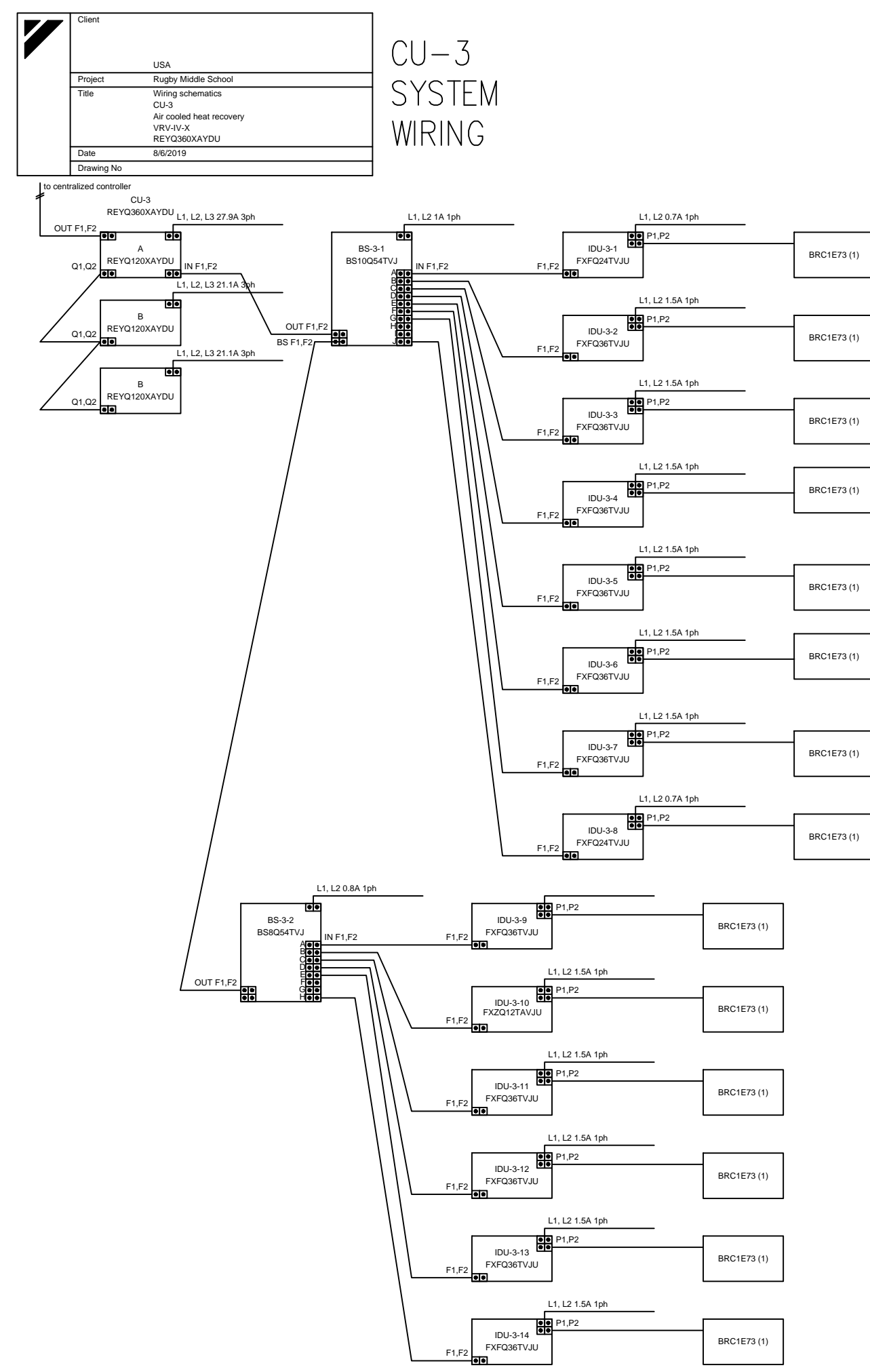
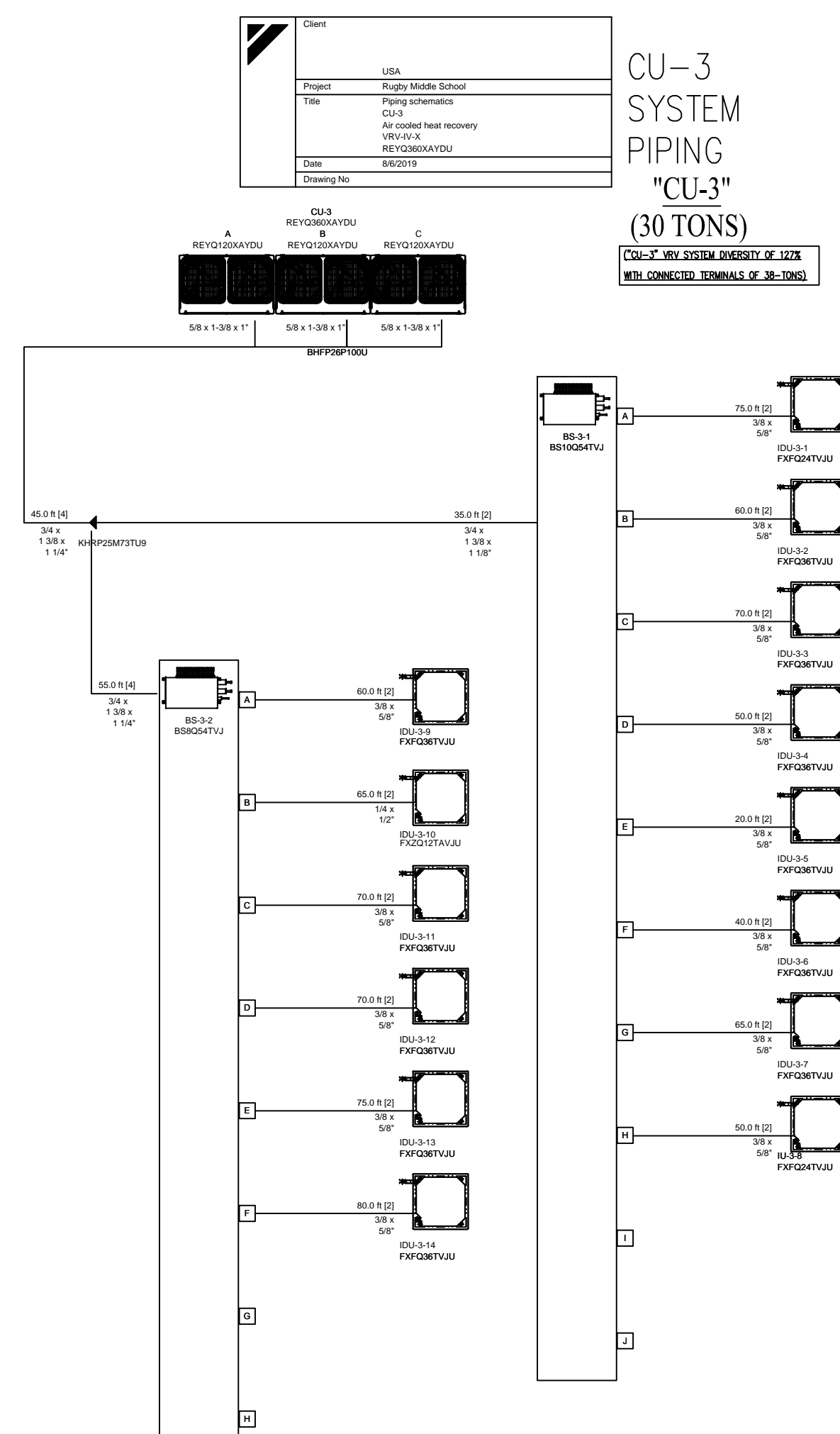
VRV - ZONES NO. 1 - "CU-1" VRV SYSTEM WIRING SCHEMATIC DIAGRAMS DETAIL

NO SCALE

VRV SYSTEMS "i-TOUCH" MGR. DDC CONTROLLER INTERFACE DIAGRAM (CU-1 THRU CU-4)

VRV - ZONES NO. 1 - "CU-1" VRV SYSTEM PIPING SCHEMATIC DIAGRAMS DETAIL

NO SCALE

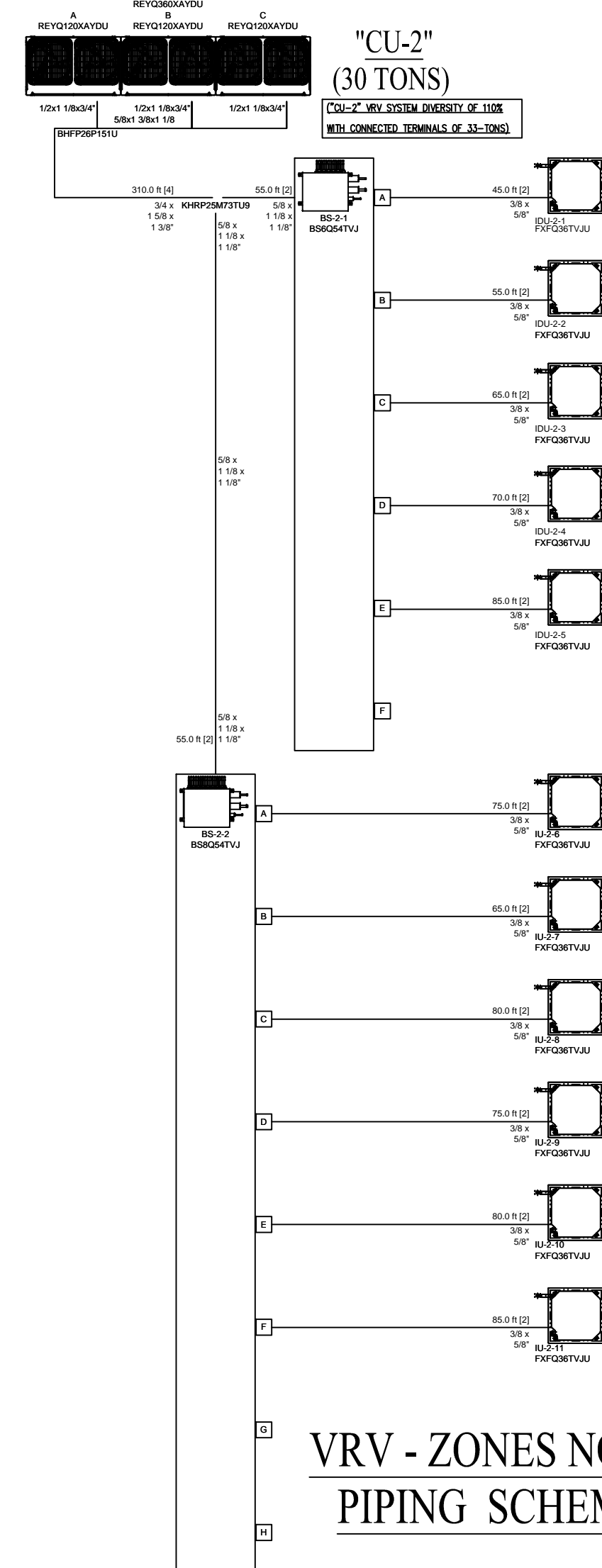
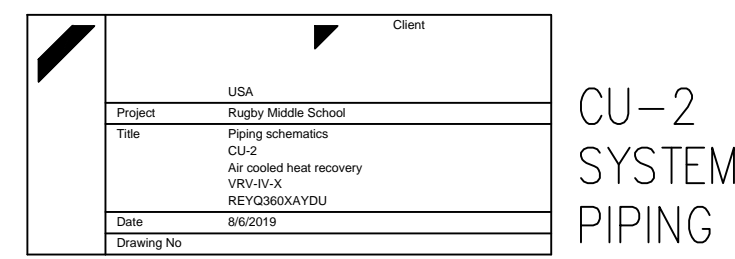


VRV - ZONES NO. 3 - "CU-3" VRV SYSTEM WIRING SCHEMATIC DIAGRAMS DETAIL

NO SCALE

VRV - ZONES NO. 3 - "CU-3" VRV SYSTEM PIPING SCHEMATIC DIAGRAMS DETAIL

NO SCALE

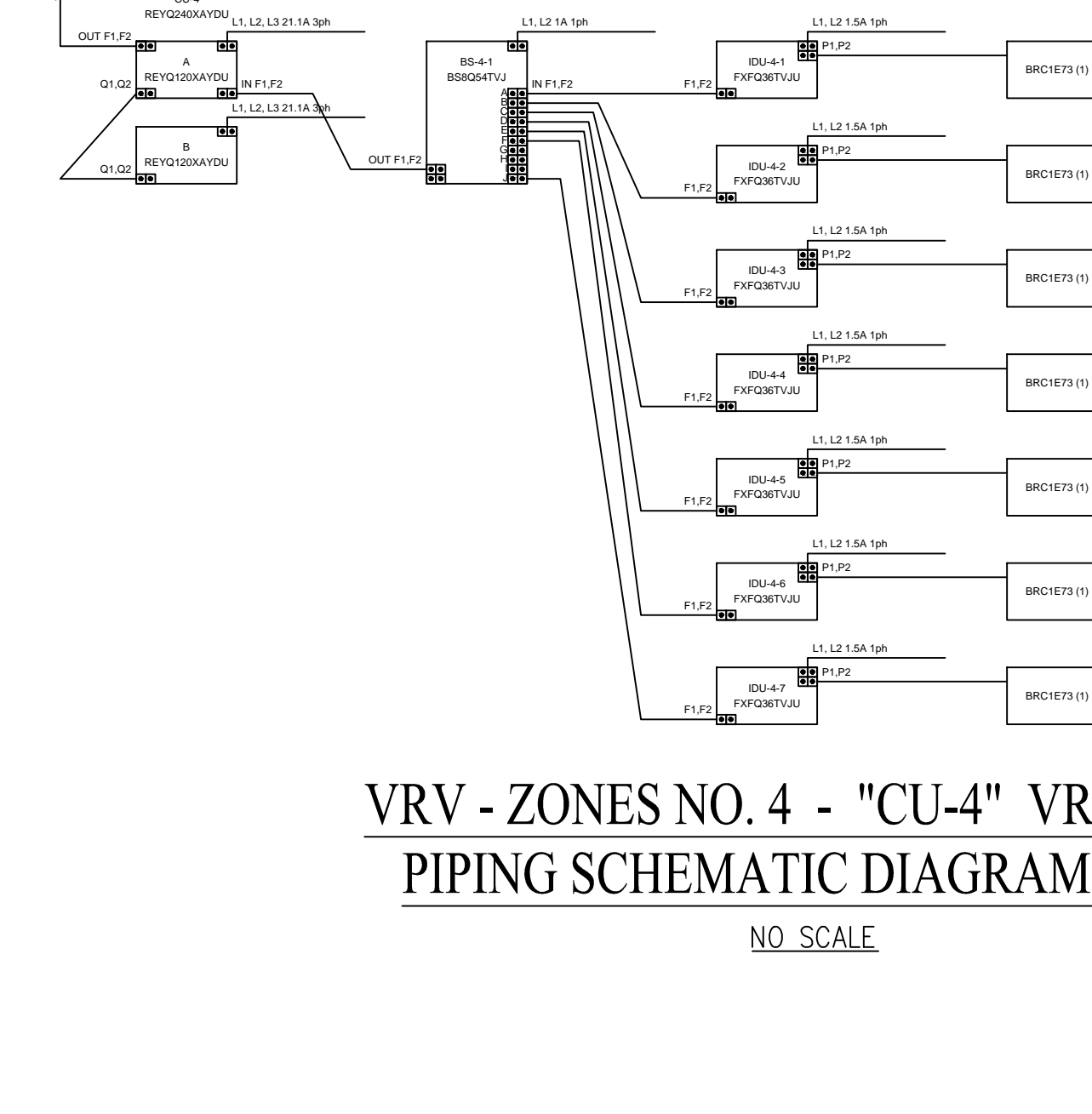
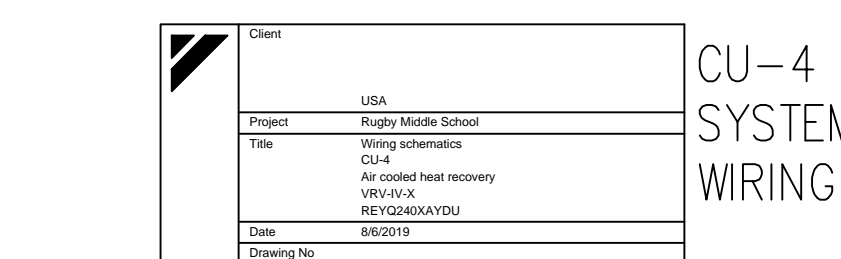


VRV - ZONES NO. 2 - "CU-2" VRV SYSTEM PIPING SCHEMATIC DIAGRAMS DETAIL

NO SCALE

VRV - ZONES NO. 2 - "CU-2" VRV SYSTEM WIRING SCHEMATIC DIAGRAMS DETAIL

NO SCALE

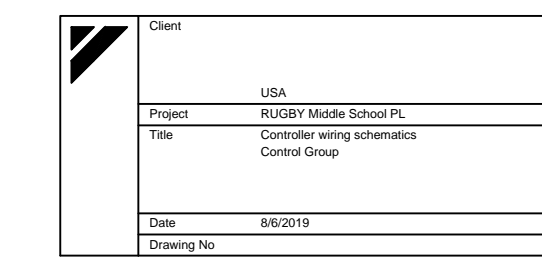


VRV - ZONES NO. 4 - "CU-4" VRV SYSTEM PIPING SCHEMATIC DIAGRAMS/DETAIL

NO SCALE

VRV - ZONES NO. 4 - "CU-4" VRV SYSTEM WIRING SCHEMATIC DIAGRAMS/DETAIL

NO SCALE



VRV SYSTEMS "i-TOUCH" MGR. DDC CONTROLLER INTERFACE DIAGRAM (CU-1 THRU CU-4)

THE NEW DDC SYSTEM "i-TOUCH" MGR. SHALL BE MOUNTED AND LOCATED IN THE MAIN MECHANICAL EQUIPMENT ROOM ON THE LOWER LEVEL "PART-B" OF RUGBY SCHOOL (SEE DWG. "RG-M-B11")

ALL VRV - ZONES NO. 1 - 4 - CENTRAL DDC VRV SYSTEM WIRING SCHEMATIC DIAGRAM w/NEW "I-TOUCH" DDC SYSTEM

NO SCALE

RUGBY - NEW VRV ("iDU") INDOOR UNIT TYPE & NOMINAL CAPACITY SCHEDULE			
MARK	UNIT SYMBOL	UNIT TYPE	CAPACITY
A		CEILING CASSETTE w/TRIM	1/2-TON NOMINAL COOLING CAPACITY
A		VERTICAL WALL MOUNTED w/TRIM	1/2-TON NOMINAL COOLING CAPACITY
B		CEILING CASSETTE w/TRIM	1-TON NOMINAL COOLING CAPACITY
C		CEILING CASSETTE w/TRIM	1-1/2-TON NOMINAL COOLING CAPACITY
D		CEILING CASSETTE w/TRIM	2-TON NOMINAL COOLING CAPACITY
E		CEILING CASSETTE w/TRIM	3-TON NOMINAL COOLING CAPACITY

RUGBY - NEW HVAC UPGRADE VRV SYSTEMS (ZONES NO. 1 - 4) OVERALL PIPING, WIRING & CONTROLS SCHEMATIC DIAGRAMS DETAILS

NO SCALE

REVISIONS			
NO.	DATE	DESCRIPTION	BY
1	DEC. 16, 2019	ISSUED FOR OWNER BIDDING.	JJC

DESIGNED BY: S.BRAUNBECK & J.CAPITAN  
 DRAWN BY: CAPITAN  
 CHECKED BY: CAPITAN  
 DATE: DECEMBER-16-2019  
 SCALE: AS NOTED  
 JOB NO.: DEI JOB NO. 19005

DESIGN & ENGINEERING ENERGY SYSTEMS INFRASTRUCTURE UTILITIES SYSTEMS ANALYSIS COMMISSIONING REVIEW

**DELTA**  
 DELTA ENGINEERING, INC. CONSULTING ENGINEERS  
 315 EAST BROAD STREET, GREENVILLE, SC 29601  
 GREENVILLE, SC TEL. NO. (864) 505-5355  
 3106 RIVERVIEW VIEW, CHARLESTON, SC 29414  
 CHARLESTON, SC TEL. NO. (864) 505-2976  
 Em: jcapitane@gmail.com

THIS DRAWING IS THE PROPERTY OF DELTA ENGINEERING, INC. AND SHALL NOT BE USED OR COPIED WITHOUT WRITTEN PERMISSION. COPYRIGHT ©

RUGBY - NEW HVAC UPGRADE SYSTEMS PIPING, CONTROLS & WIRING SCHEMATIC DETAILS

PROJECT: 2019 - 2020 HVAC UPGRADES TO FLAT ROCK & RUGBY MIDDLE SCHOOLS  
 HENDERSON COUNTY PUBLIC SCHOOLS  
 414 - 4TH STREET, HENDERSONVILLE, HENDERSON COUNTY, NORTH CAROLINA 29621

DRAWING: RG-M-2  
 SHEET: 12 OF 14  
 REV. NO.: IFOB