

REQUEST FOR BOARD ACTION

HENDERSON COUNTY BOARD OF COMMISSIONERS

MEETING DATE: July 17, 2024

SUBJECT: Construction Projects Update

PRESENTER: Bryan Rhodes, Capital Projects Construction Manager
Chris Todd, Assistant County Manager
Andrew Griffin, Facilities Director

ATTACHMENTS: YES
1.) PowerPoint

SUMMARY OF REQUEST:

Bryan Rhodes, Chris Todd, and Andrew Griffin will provide the Board of Commissioners with an update on construction projects around Henderson County.

This monthly report is a review of the scope and statuses of assigned construction management responsibilities and includes specific updates in regard to County funded construction activities.

BOARD ACTION REQUESTED:

No specific Board Action is requested, this item is for informational purposes only.

Suggested Motion:

No motion suggested.

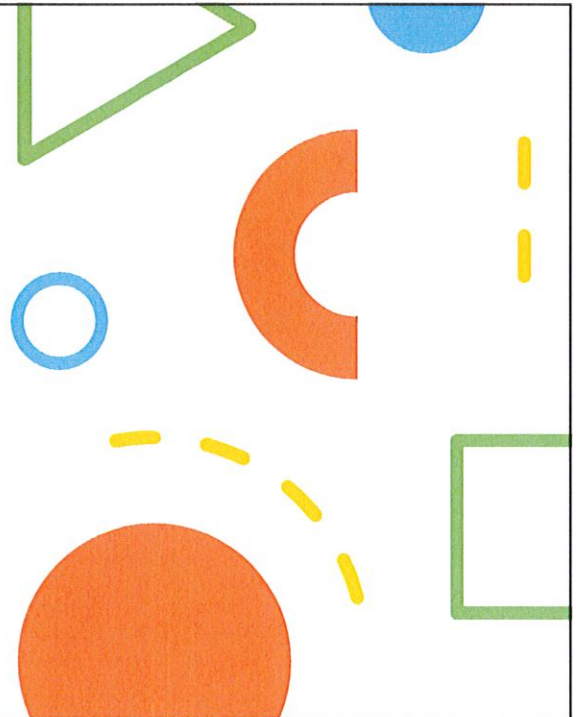
Construction Manager's Update

7/17/24



1

Henderson County Capital Projects



2

Hedrick-Rhodes Veterans Center

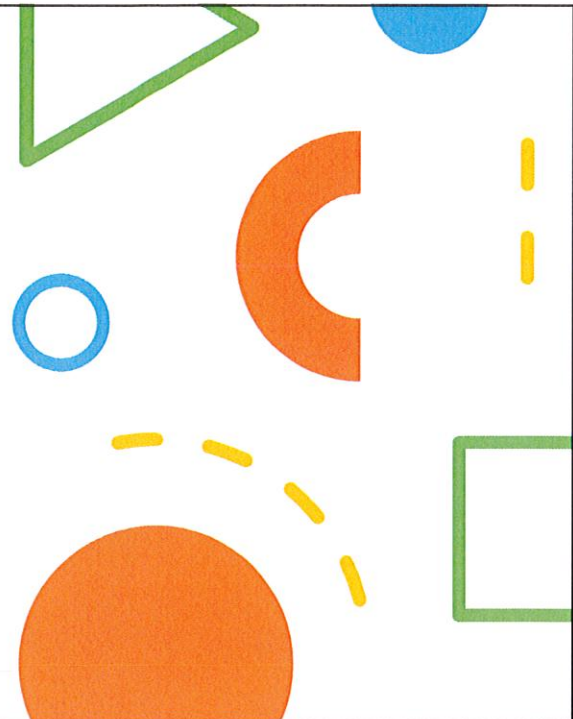
3



Complete: On time and under budget!

4

Henderson County
Public Schools
MRTS Projects



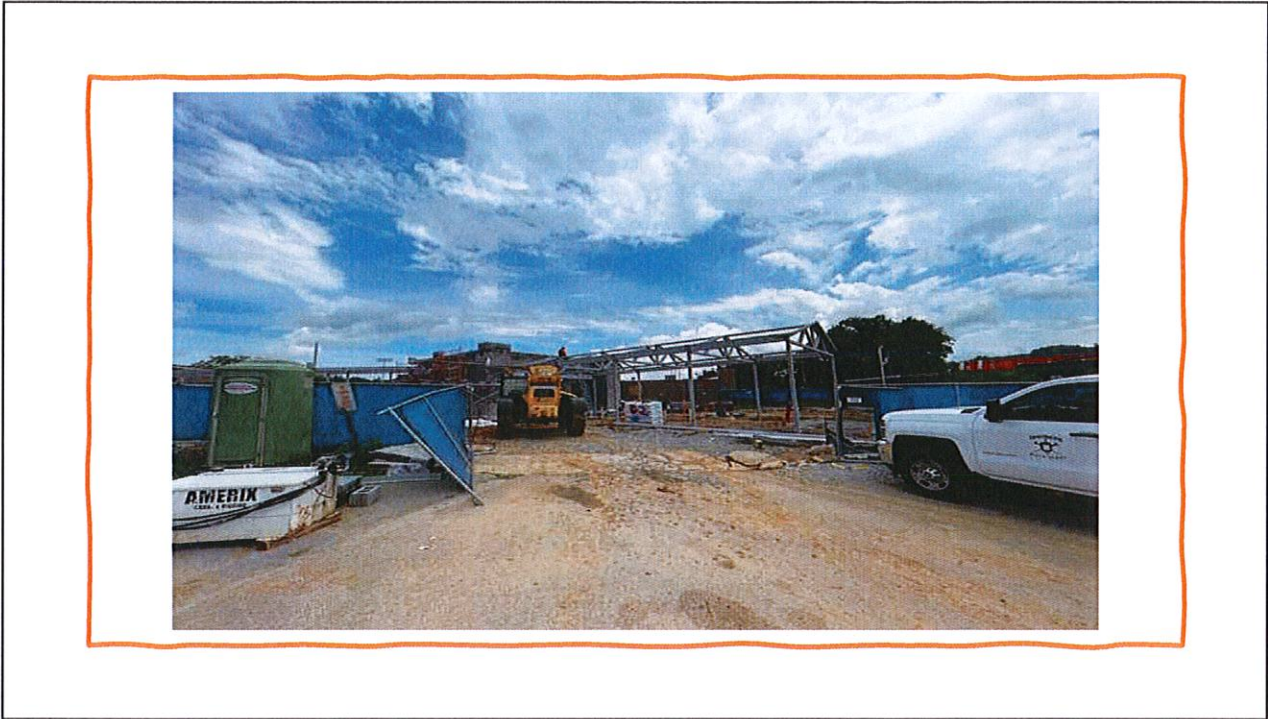
5

HCPS
MRTS
Projects

West Henderson High
Renovation and Addition



6



7



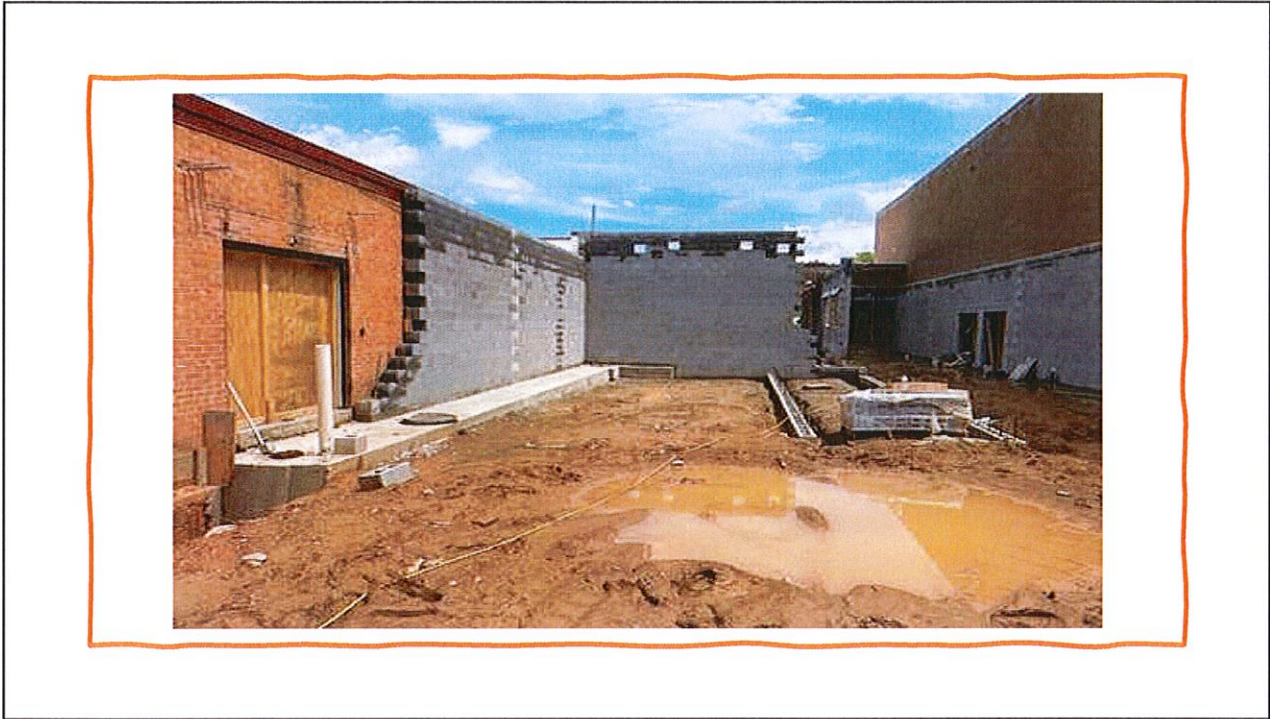
8



9



10



11



12

HCPS
MRTS
Projects

**Upward Elementary
Renovation and Addition**



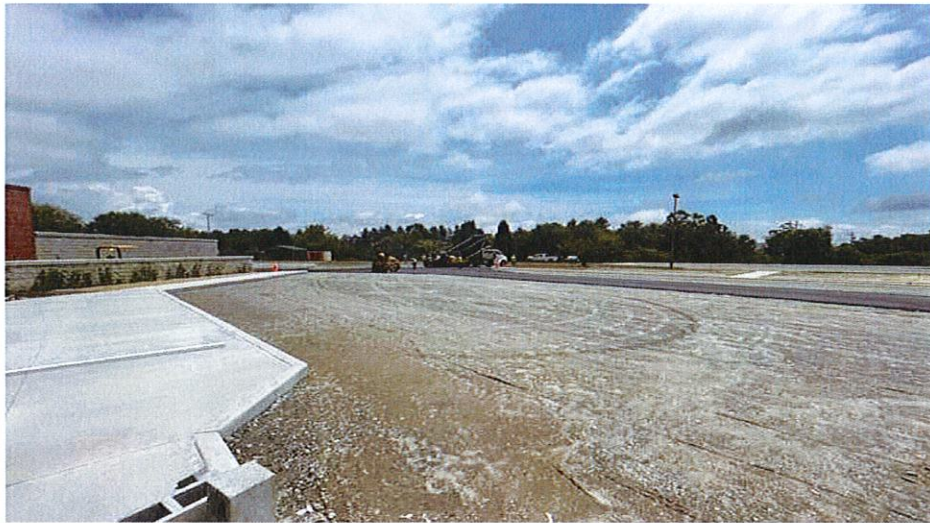
13



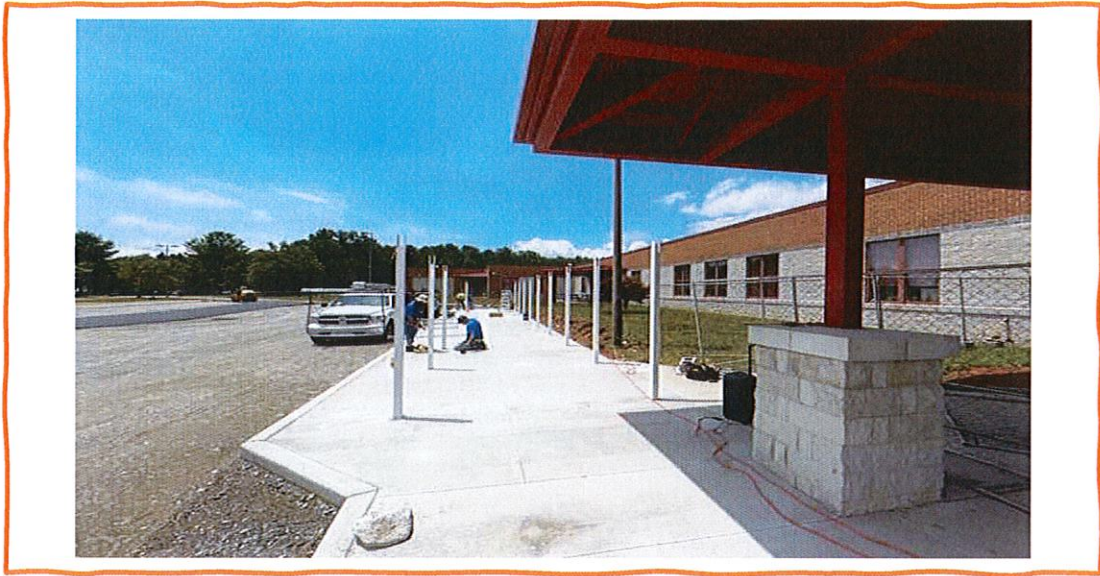
14



15



16



17



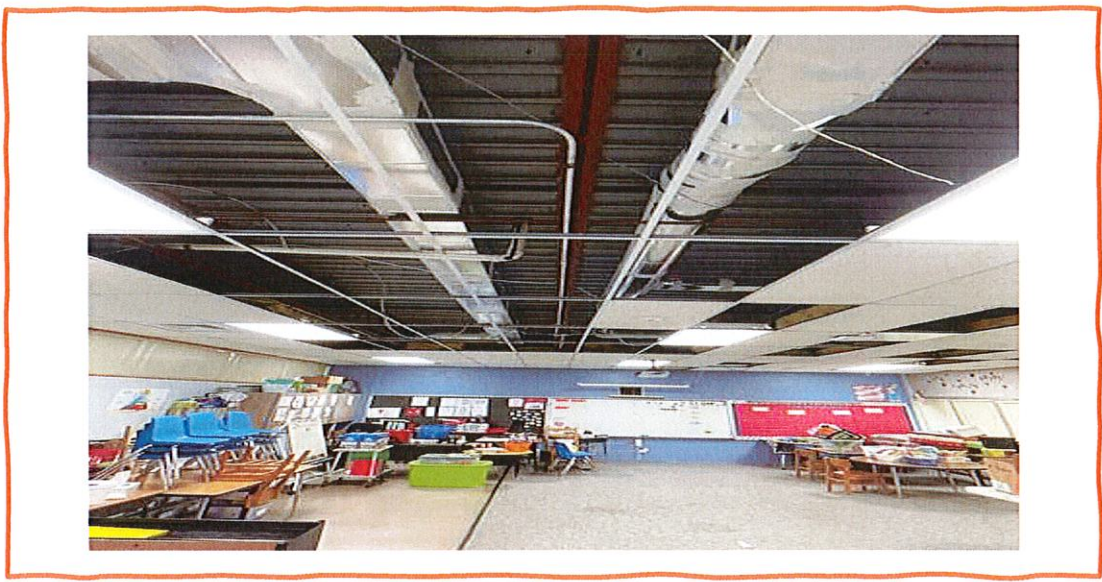
18

HCPS
MRTS
Projects

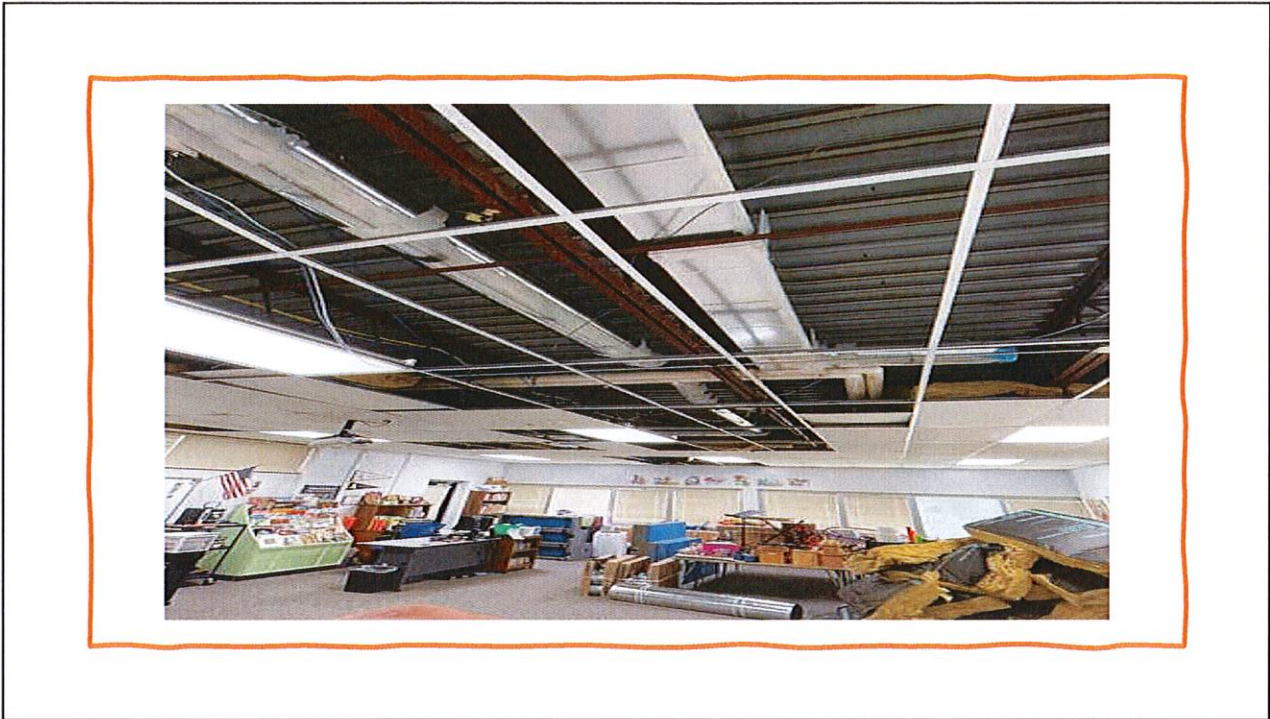
Atkinson Elementary
HVAC Replacement
Project (phase 1)



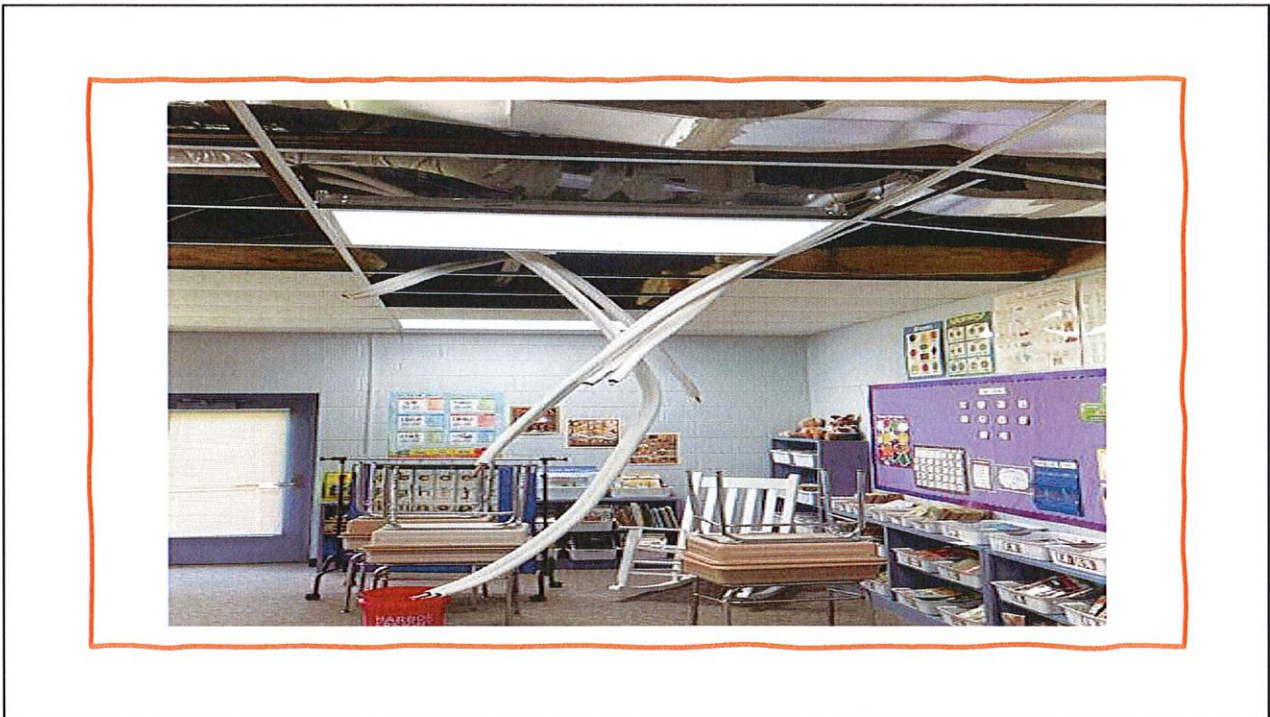
19



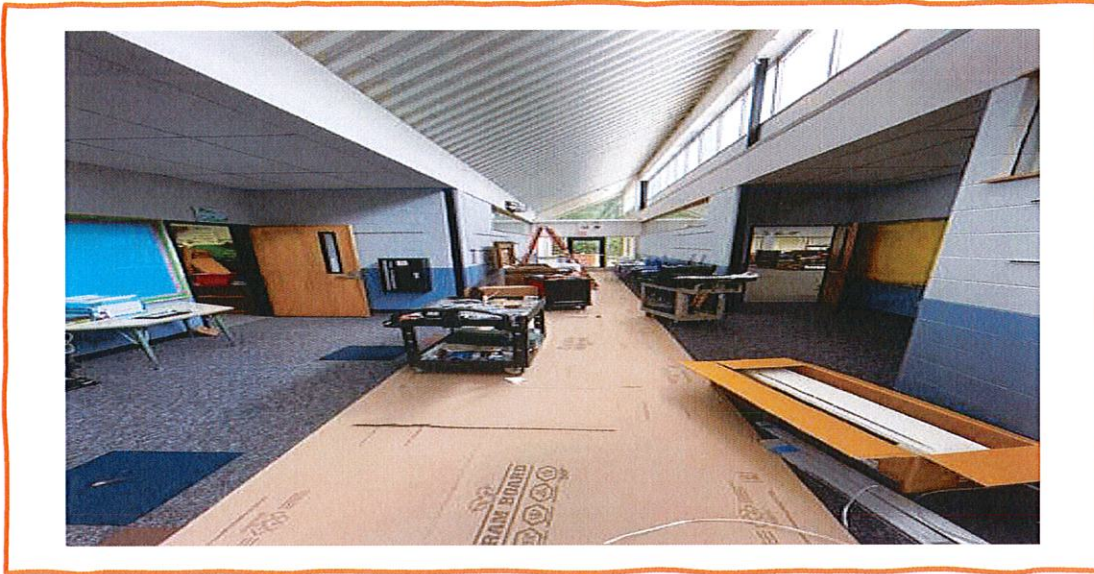
20



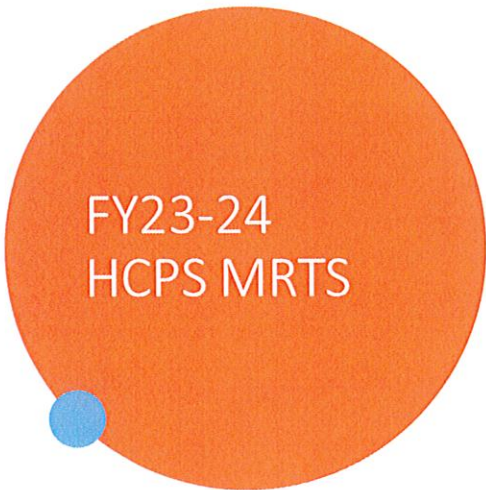
21



22



23



West High Air Handler Replacement

- Cooper Construction was the awarded contractor, and the Air Handler has a ship date of 7/5/24, with install to follow.

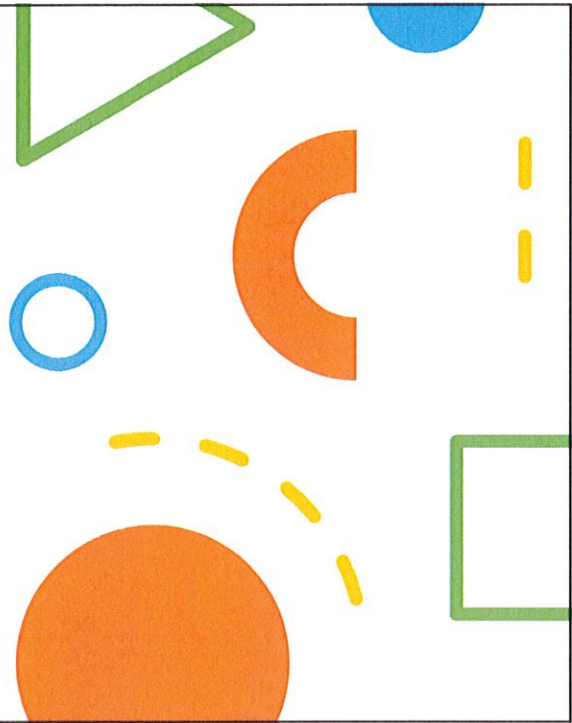
Elementary Schools HVAC Controls Upgrade

- This project is 100% complete for all 9 Elementary Schools.

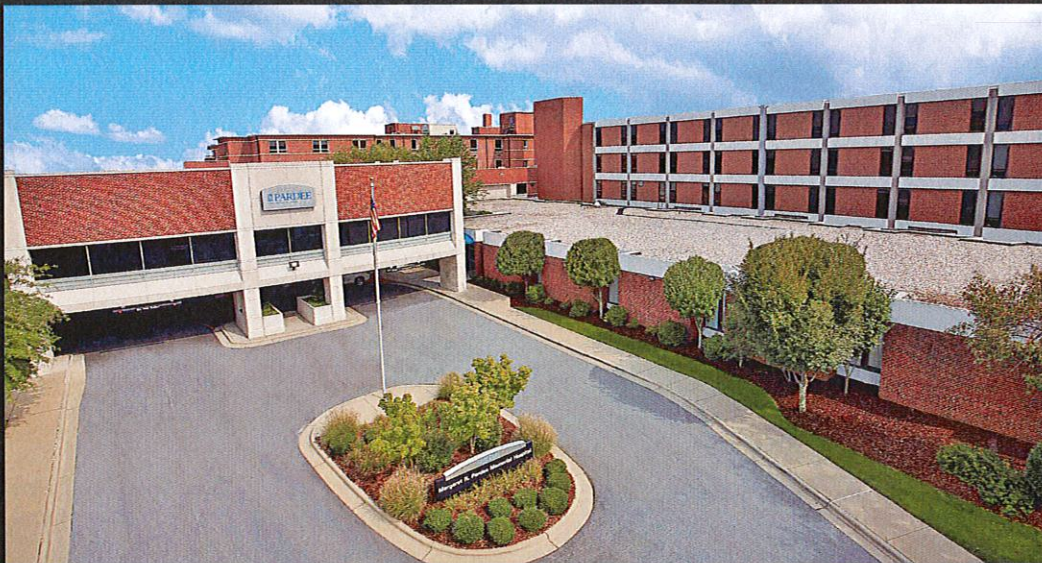
24

Construction Manager's Update

Any Questions?



25



Medical Office Buildings

26



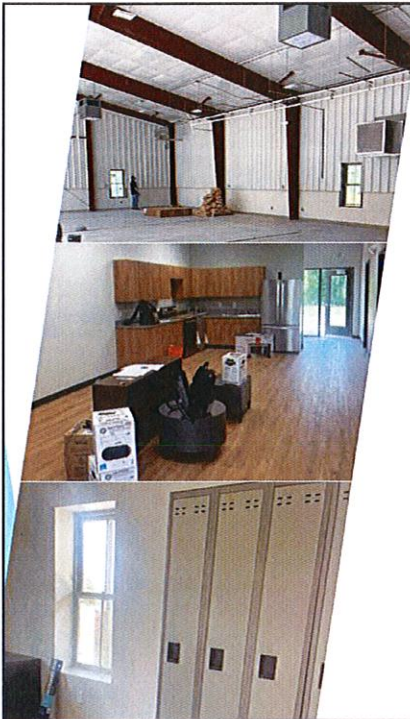
Henderson County JCAR Project

27

Facilities Services Projects

Andrew Griffin
7/17/2024

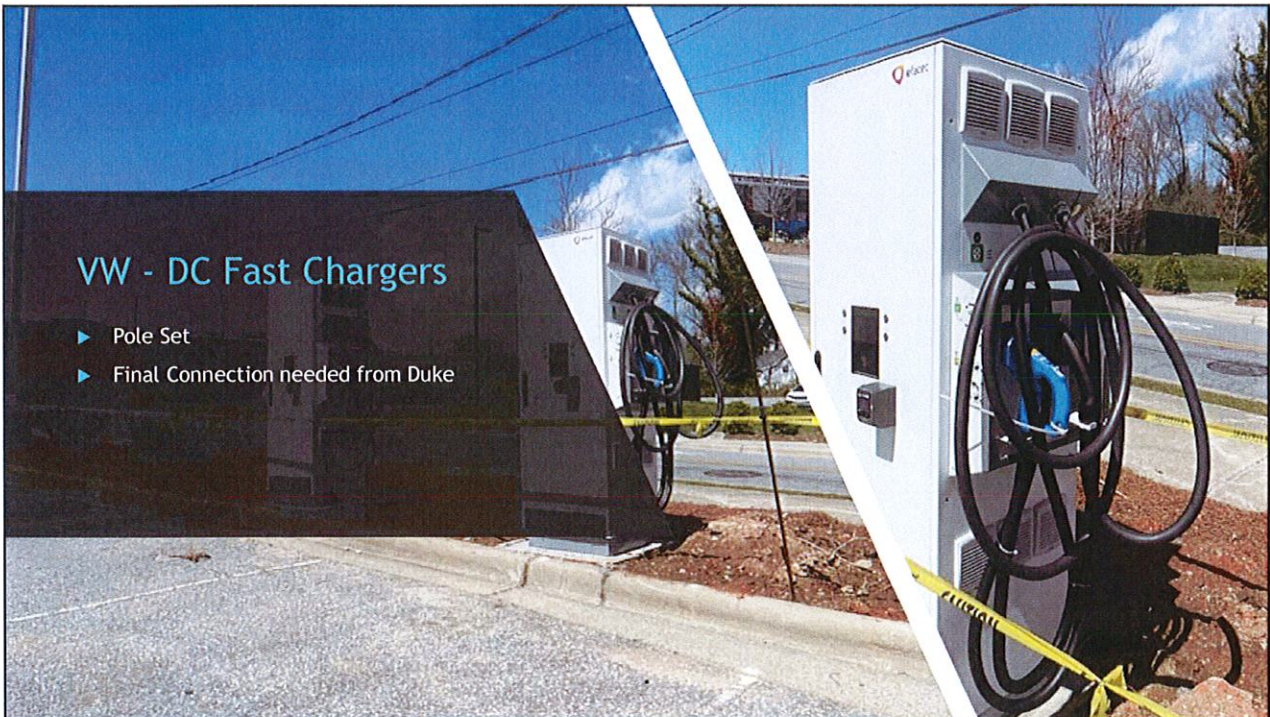
28

A collage of three interior photographs of the EMS #6 Fletcher building. The top photo shows a large, open-plan space with high ceilings and exposed wooden beams. The middle photo shows a kitchen area with wooden cabinets and a countertop. The bottom photo shows a row of white lockers.

EMS #6 Fletcher

- ▶ August 2024 Ribbon Cutting
- ▶ Punch List
- ▶ FFE
- ▶ Networking, Cameras, and Access Controls

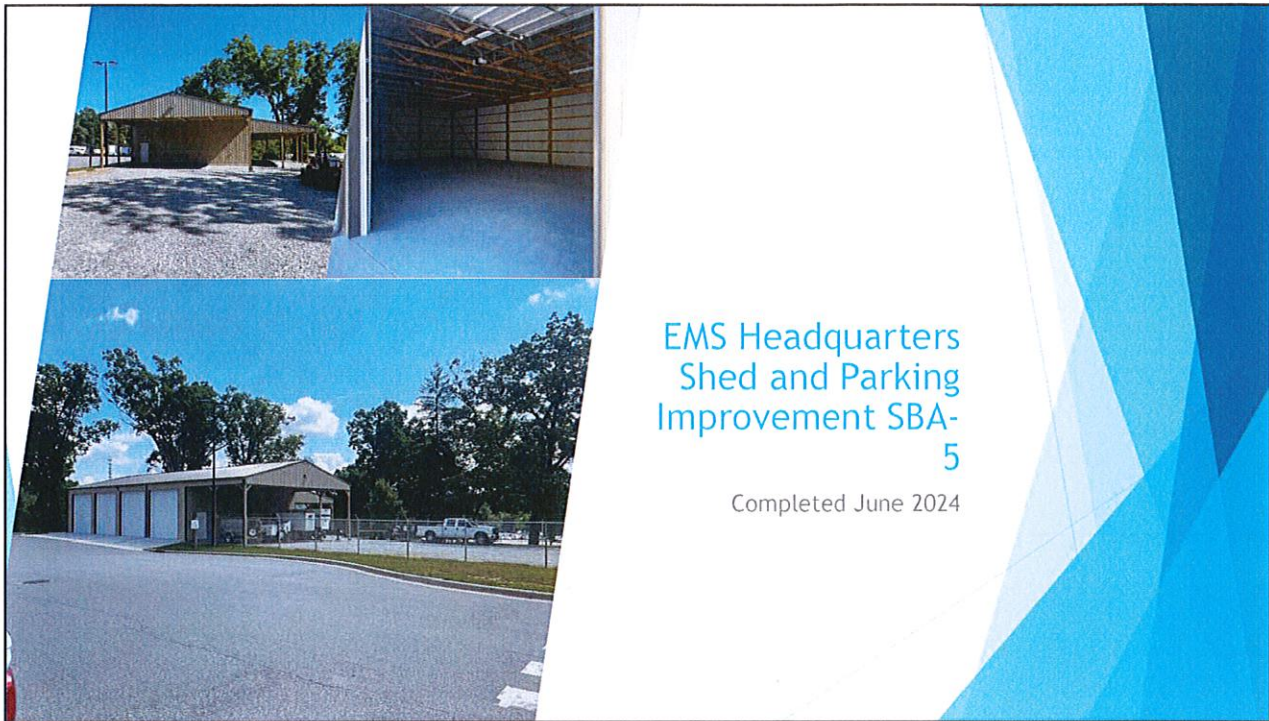
29

A collage of two photographs of DC fast charging stations. The left photo shows a dark grey metal enclosure for a charging station. The right photo shows a white charging station with a blue charging cable and a black charging cable plugged into it. The station is located outdoors on a paved area.

VW - DC Fast Chargers

- ▶ Pole Set
- ▶ Final Connection needed from Duke

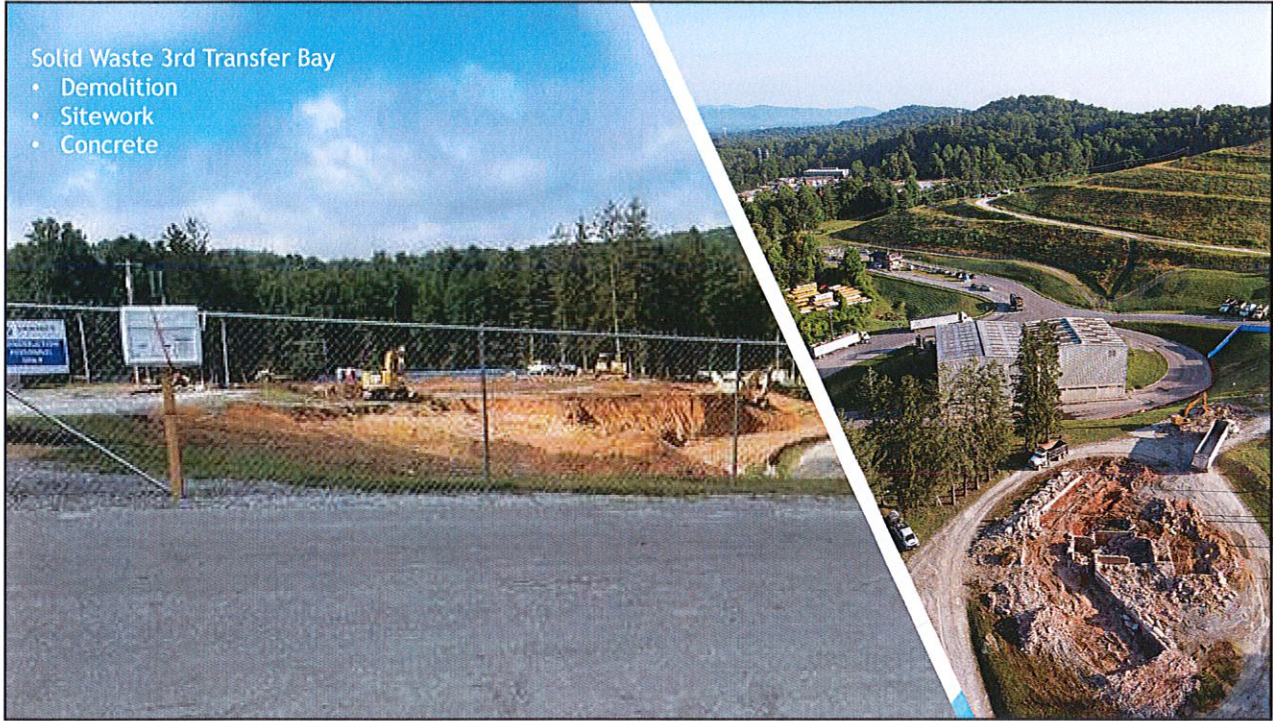
30



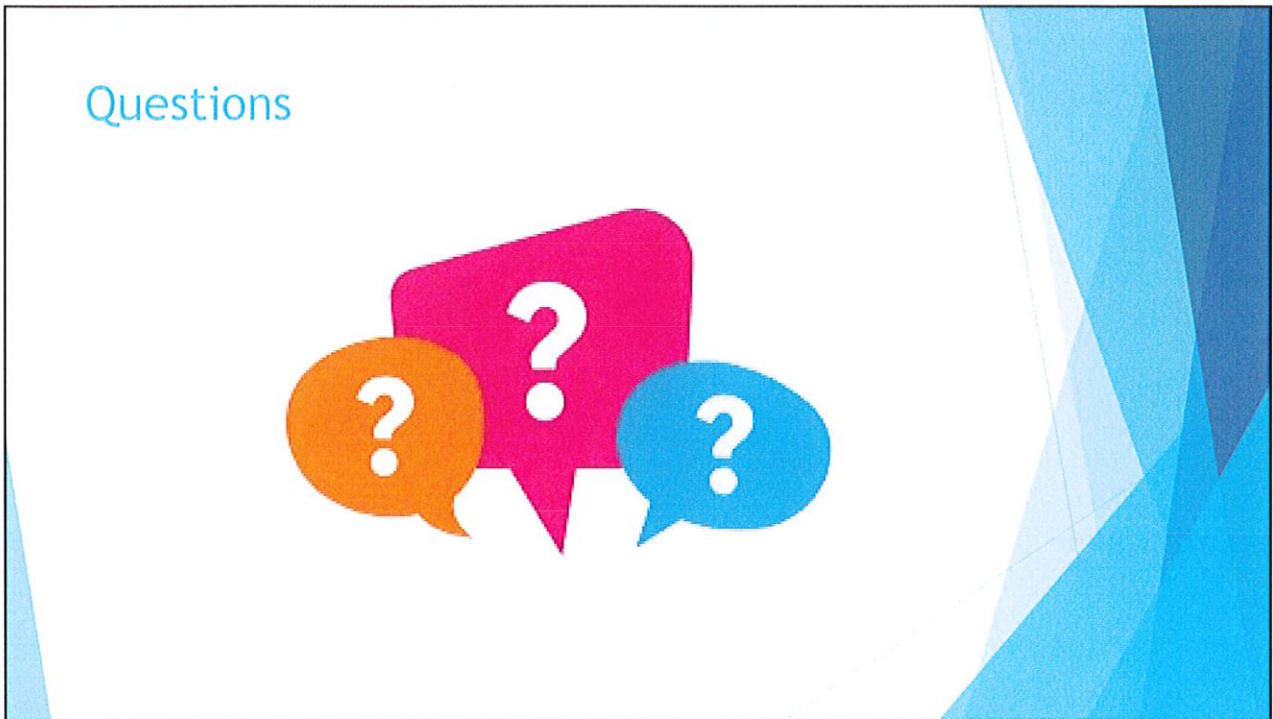
31



32



33



34