

**REQUEST FOR BOARD ACTION**  
**HENDERSON COUNTY**  
**BOARD OF COMMISSIONERS**

**MEETING DATE:** November 5, 2018

**SUBJECT:** Park Facilities at Etowah & Jackson Park

**PRESENTER:** Carleen Dixon, Parks & Recreation

**ATTACHMENTS:**

- 1) Pricing for additional restrooms
- 2) Maps of possible locations
- 3) Examples of prefabricated buildings
- 4) Options for needed utilities
- 5) Capacity figures

**SUMMARY OF REQUEST:**

**Etowah Park:**

Since hosting multiple tournaments at Etowah Park we are seeing numbers around 500 visitors per day at these events. Currently, the park has one restroom facility that has 3 water closets and 1 urinal. The capacity of this restroom facility was overloaded at the first tournament hosted and we have been renting portable restrooms ever since to accommodate these tournaments.

**Jackson Park:**

We have 6 fields located in one section of the park and 4 of these fields have close access to restrooms however, fields 6 and 7 do not. The addition of a restroom facility in the proposed location would provide fields 6 and 7 with greater restroom access and safer access for parents who are watching one child play while another needs to get to the facilities. It would expand our overall capacity to host large tournaments and events in the park.

**BOARD ACTION REQUESTED:**

No board action is requested.

**Suggested Motion:**

*No motion is suggested.*

**Attachment 1 and 4: Pricing for additional restrooms and needed utilities**

<b>Prefabricated Restroom Option:</b>	<b>Includes</b>	<b>Quoted Price Unit Includes (Freight, off-loading and setting the building and final connection)</b>	<b>Estimated Prep/Utilities/Sidewalk</b>	<b>Total</b>	<b>NOTE</b>
Cortez (layout attached)	6-lavatories/water closet units	139,582	30,000	169,582	<b>6 units</b>
<b>Stick Built Option:</b>	<b>Includes</b>	<b>Stick Built facility including pad, sidewalk, permit, fixtures, etc.</b>	<b>Estimated Design and Permitting Fees</b>		
Fuxedo Park - Similar Estimate	4-lavatories, 5-water closets, 1 urinal	175,000	20,000	195,000	<b>6 units</b>

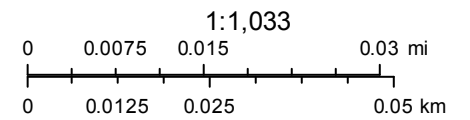
**Utility Connections Per Location**

<b>Jackson Park</b>	Sewer is currently available at this location in the park	Hookup included in above price
<b>Etowah Park Option 1</b>	Upgrade current septic system to handle more compacity	40,000
<b>Etowah Park Option 2</b>	Connect to Etowah Sewer	375,000

# Attachment 2 Jackson Park Location



October 12, 2018

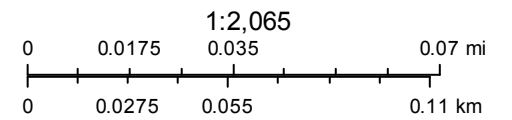


Henderson County IT/GIS  
Sources: Esri, HERE, Garmin, USGS, Intermap, INCREMENT P, NRCan, Esri Japan, METI, Esri China (Hong Kong), Esri Korea, Esri (Thailand), NGCC, © OpenStreetMap contributors, and the GIS User Community

# Attachment 2 Etowah Park Location

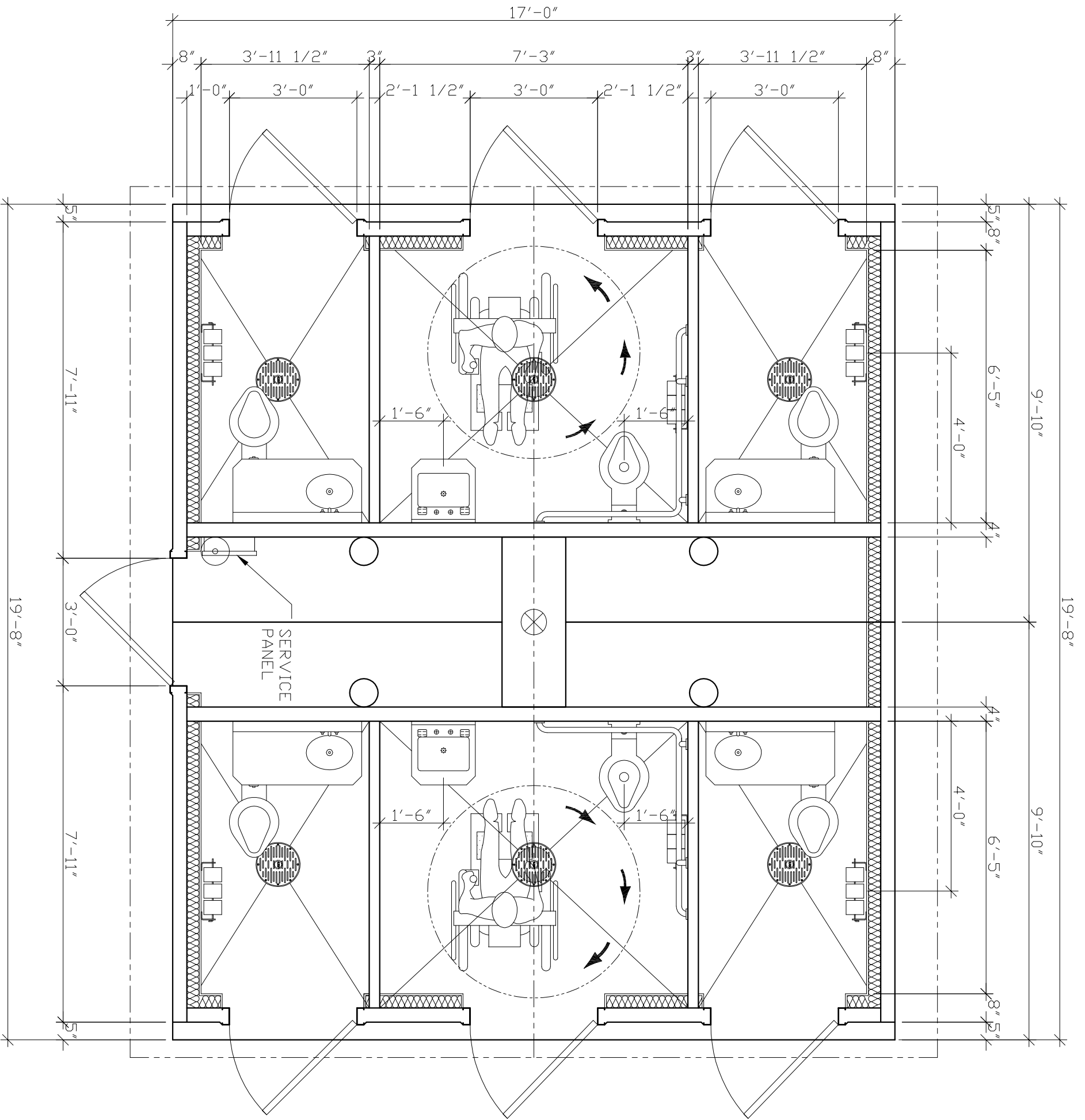


October 12, 2018



Henderson County IT/GIS  
Sources: Esri, HERE, Garmin, USGS, Intermap, INCREMENT P, NRCan, Esri Japan, METI, Esri China (Hong Kong), Esri Korea, Esri (Thailand), NGCC, © OpenStreetMap contributors, and the GIS User Community

# Attachment 3: Example of prefabricated building



NOTE:  
The information contained herein is proprietary and the exclusive property of CXT Incorporated. The information may only be used by the original recipient for the purpose of the project for which it was prepared. Any other use is strictly prohibited without the prior written consent of CXT Incorporated. By allowing use of this information, CXT Incorporated grants no warranty, express or implied, including a warranty of merchantability or of fitness for a particular purpose.  
CXT Incorporated

3808 N. Sullivan Bldg. #7 Spokane, WA 99216  
**Precast Products**  
 901 N. Highway 77 Hillsboro, TX 76645  
 PROJECT TITLE  
**CORTEZ SECTIONAL**  
 PROPOSAL NUMBER 14-291P

NO.	DESCRIPTION	DATE	APPROVAL	DATE
1	DESIGN	08-03-14		
2	PERMITS	14-291P		
3	CONSTRUCTION			

CHECKED: [Signature] DATE: 08-03-14  
 DRAWN: ROB B. WALKER  
 PROJECT NO. 14-291P  
 SHEET NO. 32

FLOOR PLAN

DWG. NO. CR-03  
 SHEET 3  
 REV.

Attachment 5: Capacity figures

People Attending	1 Hours	2 Hours	3 Hours	4 Hours	5 Hours	6 Hours	7 Hours	8 Hours
0 - 50	1	1	1	2	2	2	2	2
50 - 100	2	2	2	2	3	3	3	3
100 - 250	3	3	3	3	4	4	4	4
250 - 500	4	4	4	6	6	6	8	8
500 - 750	4	4	6	6	6	8	8	8
750 - 1000	6	6	6	8	8	8	12	12
2000	8	8	8	8	8	12	12	12
3000	8	8	10	10	10	12	16	16
4000	8	8	12	12	16	16	20	24
5000	12	12	12	16	20	30	30	30
6000	12	12	16	16	20	30	30	36
7000	12	12	16	20	30	32	40	40
8000	12	12	20	24	32	32	40	44
9000	16	16	24	28	40	40	52	52
10000	16	16	28	40	40	52	52	60

Number of Toilets