

REQUEST FOR BOARD ACTION

HENDERSON COUNTY BOARD OF COMMISSIONERS

MEETING DATE: August 17, 2016

SUBJECT: Beaver Management Assistance Program

PRESENTER: John Mitchell, Business and Community Development Director

ATTACHMENTS:

1. BMAP Obtaining Service Performance
2. Invoice from North Carolina Wildlife Resources

SUMMARY OF REQUEST:

Henderson County has participated in the Beaver Management Assistance Program in previous years. This program is a cost share program, and is managed through the North Carolina Wildlife Resources Commission. Citizens who elect to participate in the program are able to take advantage of a much lower cost for dealing with beaver management. Henderson County's share of the program is \$4,000. The program year begins October 1, 2016 and runs through September 30, 2017.

BOARD ACTION REQUESTED:

The Board is requested to direct the Planning Department Staff to sign the Beaver Management Assistance Program form, electing to participate in the program for the 2016-2017 year.

Suggested Motion:

I move the Planning Department Staff sign the Beaver Management Assistance form, electing to participate in the program for the 2016-2017 year.



OBTAINING SERVICE

October 2015 - September 2016

Beaver Management Assistance Program

Since the first successful reintroduction of beaver into North Carolina in 1939, populations in the state have increased dramatically. Along with this population expansion has come an increase in benefits derived from beaver (for example, increased wetland habitat for a variety of plant and animal species, reduced downstream sedimentation, and improved water quality). However, detrimental impacts of beaver have also increased. For example, in 2015 landholders in eastern North Carolina reported that beaver damage to roads, agriculture and timber lands, drainage systems, landscape plantings, and other property exceeded \$7.06 million. In 2014-15 the North Carolina Department of Transportation (DOT) spent over \$1 million to repair roads damaged by beaver activities.

To address some of these problems, the North Carolina legislature in 1992 created the Beaver Damage Control Advisory Board with the charge to develop, implement, and oversee a program to manage beaver damage on public and private lands. The nine-member Advisory Board, composed of representatives from state and federal agencies and the private sector, established the Beaver

Management Assistance Program (BMAP). A major goal of the BMAP is to educate the public and participating landholders about the best strategies for managing beaver damage including the pros and cons of removing beaver or using pond levelers, exclusion, or other non-lethal techniques. Wildlife specialists conduct programs and workshops on beaver damage management and beaver ecology for civic and professional organizations, schools, landholder groups, and others. When beaver damage is intolerable, wildlife specialists alleviate the damage by removing the offending animals and their dams using humane and environmentally acceptable methods or by using pond levelers, exclusion, or other non-lethal techniques.

Customers

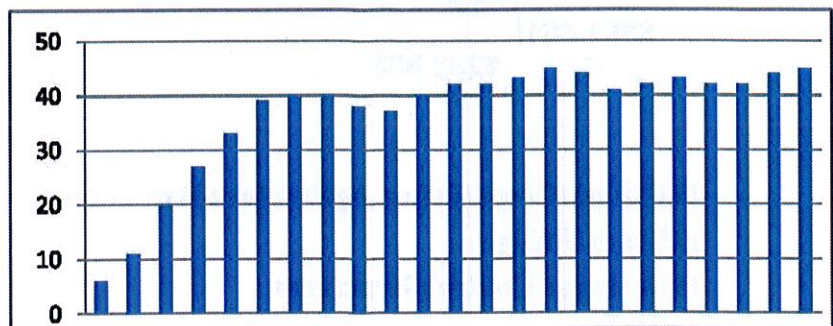
The BMAP assists the DOT, city and county governments, soil and water conservation districts, private landholders, and others with beaver

problems. The program is run by USDA Wildlife Services through a cooperative agreement with the North Carolina Wildlife Resources Commission and DOT. Funding comes from state, county, federal, and private sources.

How to Participate

All counties are eligible to participate in the program through an annual cost share assessment of \$4,000 per county. Presently, 45 counties participate in the program. Individuals residing in these counties may obtain assistance with beaver damage by contacting their county Cooperative Extension or Soil and Water Conservation District office (listed on the back of this page). Statewide assistance with beaver damage problems is also provided to the DOT. All requests for assistance receive an immediate response, but due to current workloads the start of direct assistance activities may vary.

PARTICIPATING COUNTIES



1993-2016

Cost Share

Participants in the program pay a small cost-share fee for services. This cost-share fee is \$25 for each visit to their property. There are no charges for travel time. There is also a \$125 charge for dam removal. Wildlife specialists average about 10 visits over a 30-day period to resolve a beaver problem. After 15 visits to a landholder's property in any one year, costs increase. There is no charge for the initial assessment which includes time spent discussing the program and signing paperwork. During this assessment the wildlife specialist discusses with the landholder the positive and negative impacts of beaver and recommends the best course of action. If damage management activities are recommended, time and costs are estimated and the wildlife specialist begins work. Landholders wishing to conduct their own work are provided individualized training at no cost.

Assistance Priorities

Requests for assistance are handled on a first-come, first-served basis with top priority addressing threats to public health and safety, particularly along highway rights-of-way and county-owned property. Work for individual landholders is next, followed by work for soil and water conservation districts, municipalities, corporate landholders, and others.

Additional Information

For additional information about the Beaver Management Assistance Program, please call or write the USDA Wildlife Services at 6213-E Angus Drive, Raleigh, NC 27617, tel. 866-487-3297, or the NC Wildlife Resources Commission, Division of Wildlife Management at 1751 Varsity Drive, Raleigh, NC 27606, tel. 919-707-0050.

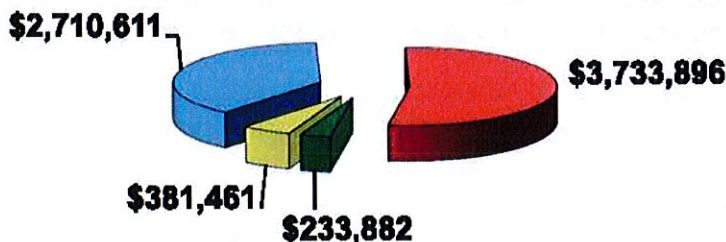
In FY 2015 BMAP activities prevented the loss of, or damage to, \$7.06 million in resources; \$6.55 saved for each \$1.00 spent.

To Request Assistance

Bertie	252-794-5317
Bladen	910-862-4591
Camden	252-338-1919 Ext 262
Carteret	252-222-6352 - Todd
Catawba	828-465-8240
Cleveland	704-482-4365
Columbus	910-642-2196 Ext. 3
Craven	252-633-1477
Cumberland	910-321-6860
Duplin	910-296-2120 Ext. 3
Edgecombe	252-641-7821
Franklin	919-496-3344
Gates	252-357-1400
Granville	919-603-1350
Greene	252-747-3705 Ext. 3
Halifax	252-583-3481
Harnett	910-893-7530
Henderson	828-694-6526
Hoke	910-875-3461
Iredell	704-872-5061 Ext. 3
Jackson	828-586-4009
Johnston	919-989-5380
Lee	919-775-5624
Lenoir	252-527-2191
Martin	252-789-4370
McDowell	828-652-7121 Ext 375
Nash	252-459-9810
New Hanover	910-798-7660
Northampton	252-534-2711
Onslow	910-455-0181
Pamlico	252-745-4121
Pasquotank	252-338-3954
Pender	910-259-1235
Perquimans	252-426-5545
Pitt	252-902-3250
Robeson	910-671-3022
Rutherford	828-287-4220 Ext. 3
Sampson	910-592-7161
Union	704-283-3801
Vance	252-438-8188
Wake	919-250-1050
Warren	252-257-3640
Washington	252-793-4561 Ext. 3
Wayne	919-731-1521
Wilson	252-237-5147 Ext. 3

RESOURCES SAVED FROM BEAVER DAMAGE

October 2014 - September 2015



- Timber/Crops/Other Agriculture Resources
- Roads/Bridges
- Drainage Control Structures
- Other

Updated December 29, 2015





North Carolina Wildlife Resources Commission

April 6, 2016

BEAVER MANAGEMENT ASSISTANCE PROGRAM
County Contact Information

Check the county contact information below and make changes in the spaces provided.

CURRENT INFORMATION

UPDATED INFORMATION

Table with 2 columns: CURRENT INFORMATION and UPDATED INFORMATION. Rows include County, BMAP Contact Name, Address, City, Zip, Phone, and Email Address.

No, our county does not wish to participate in the Beaver Management Assistance Program for the 2016-2017 year.

Name (please print)

Title

Signature

Yes, our county wishes to participate in the Beaver Management Assistance Program for the 2016-17 year.

** Important: List the telephone number County Residents should use to obtain services. This number is to request BMAP service and is not the number listed above table for BMAP administration.

Phone number for BMAP Service:

Name (please print)

Title

Signature



North Carolina Wildlife Resources Commission

Gordon Myers, Executive Director

July 15, 2016

This letter is a follow up to the *Letter of Intent to Participate in the Beaver Management Assistance Program (BMAP)* emailed to all North Carolina counties April 6-11, 2016. We have not yet received your Participation Acceptance Form letting us know whether your county will be participating in the FY 2017 BMAP or not. **G. S 113-291.10 states that counties must let us know, in writing, by September 30, if they wish to participate. For planning purposes, we prefer that counties let us know no later than August 15, 2016.** For your convenience we have enclosed the Letter of Intent and the Participation Acceptance Form again. An invoice has also been enclosed for use by those who choose to participate.

Counties that choose to participate in BMAP will receive an "Obtaining Service October 2016 – September 2017" bulletin. This bulletin can be available in your local county offices for folks wanting to know more about the program. The Obtaining Service October 2015 – September 2016 bulletin has been enclosed as an example. On the example bulletin you will see a column titled; "To Request Assistance". On the 2016-17 bulletin this column will contain the local county number residents, businesses and government agencies call when they want to request BMAP services. The county staff person answering the phone at this number records the contact information and passes it onto the BMAP field staff assigned to your county. If your county has chosen to participate but you do not know the BMAP field staff assigned to your county please call USDA-Wildlife Services at 866-487-3297.

Enclosures: FY 2016 BMAP Obtaining Services Leaflet
Participation Acceptance Form
Letter of Intent April 6, 2016
BMAP Invoice

Sincerely,

A handwritten signature in blue ink, appearing to read "Jessie Birckhead".

Jessie Birckhead
Chair, Beaver Management Assistance Program Advisory Board
N.C. Wildlife Resources Commission,
Div. Wildlife Management
1722 Mail Service Center
Raleigh, NC 27699-1722
Phone-(919)707-0068
Email- jessie.birckhead@ncwildlife.org



North Carolina Wildlife Resources Commission

Gordon S. Myers, Executive Director

Invoice Date: July 15, 2016

County of Henderson
Attn: Matt Champion
100 N. King St.
Hendersonville, NC 28792

Attn: Matt Champion

Listed below is the amount of the enrollment fee for Henderson County to participate in the Beaver Management Assistance Program (BMAP) for the period of October 1, 2016 through September 30, 2017.

Quantity	Unit	Description	Amount
1	Year 2016-17	Beaver Management Assistance Program (BMAP)	\$4,000

Make Checks Payable To: **USDA, APHIS-Wildlife Services**

Return check to:
North Carolina Wildlife Resources Commission
Division of Wildlife Management
BMAP Program
1722 Mail Service Center
Raleigh, NC 27699-1722

If you have question, please contact Shauna Glover at 919-707-0050.
*G.S. 113-291.10