

REQUEST FOR BOARD ACTION

HENDERSON COUNTY BOARD OF COMMISSIONERS

MEETING DATE: March 2, 2015

SUBJECT: Official Zoning and Water Supply Watershed Map Update

PRESENTER: Autumn Radcliff, Senior Planner

ATTACHMENTS: 1. Official Zoning Map, As Updated
2. Official Water Supply Watershed, As Updated

SUMMARY OF REQUEST:

The official zoning and water supply watershed maps are updated digitally to reflect all map changes approved by the Board of Commissioners and any annexations approved by surrounding municipalities. The County keeps a notarized paper copy of the official zoning and water supply watershed maps as well, but these maps are not adjusted each time a rezoning or annexation occurs. It is good practice to periodically update the official zoning and water supply watershed maps in paper form. Henderson County's paper form of the official zoning map was last updated on September 21, 2011 when the Board adopted the Land Development Code and associated zoning map amendments. The official water supply watershed map was last updated on, May 22, 2012 when the State approved the City of Hendersonville's new intake.

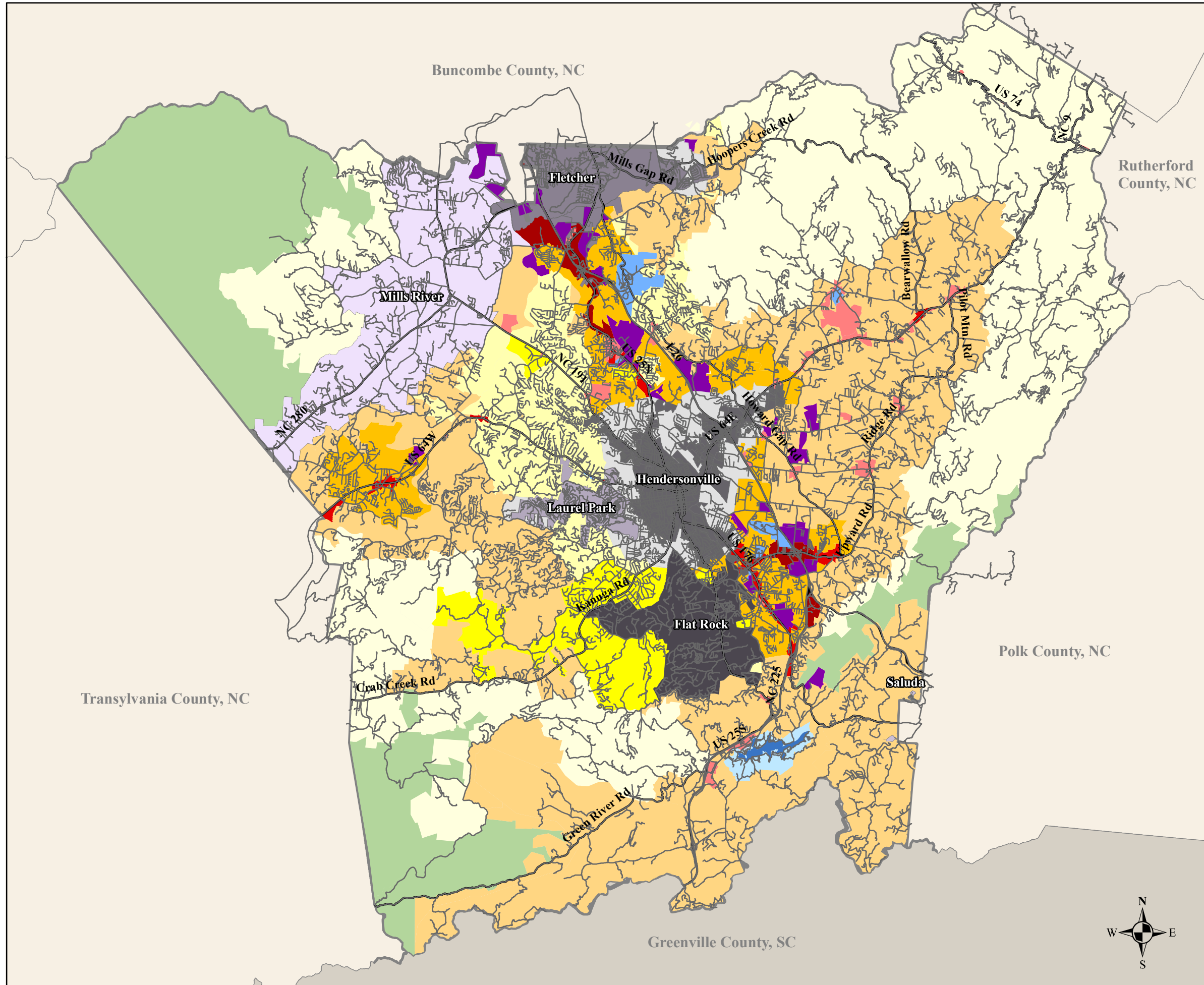
The attached maps are the official zoning and water supply watershed maps and includes zoning map amendments approved since 2011, including the recent community plan rezoning and the WS-III boundary adjustments in Mills River. No public hearing is required to adopt the official zoning and water supply watershed map updates.

BOARD ACTION REQUESTED:

Planning Staff recommends that the Board of Commissioners adopt the official zoning and water supply watershed map updates that will serve as the official paper form.

Suggested Motion:

I move that the Board adopt the official zoning and water supply watershed map updates as submitted by staff.



Henderson County, NC Official Zoning Map

(Adopted March 2, 2015 by
Henderson County Board of Commissioners)

Legend

- Streets
- Major Roads
- Zoning Districts**
- Residential 4
- Residential 3
- Residential 2 - Rural
- Residential 2
- Residential 1
- R-40
- WR
- SW
- O&I
- Local Commercial
- Local Commercial (CD)
- Community Commercial
- Regional Commercial
- Industrial
- Flat Rock
- Fletcher
- Hendersonville
- Laurel Park
- Mills River
- Saluda
- Municipal ETJ

0 1 2 Miles














This map is prepared from the inventory of real property found within this jurisdiction, and is compiled from recorded deeds, plats, and other public records and data. Users of this map, are hereby notified that the aforementioned public primary information sources should be consulted for verification of the information contained on this map. The County and mapping company assume no legal responsibility for the information contained on this map.

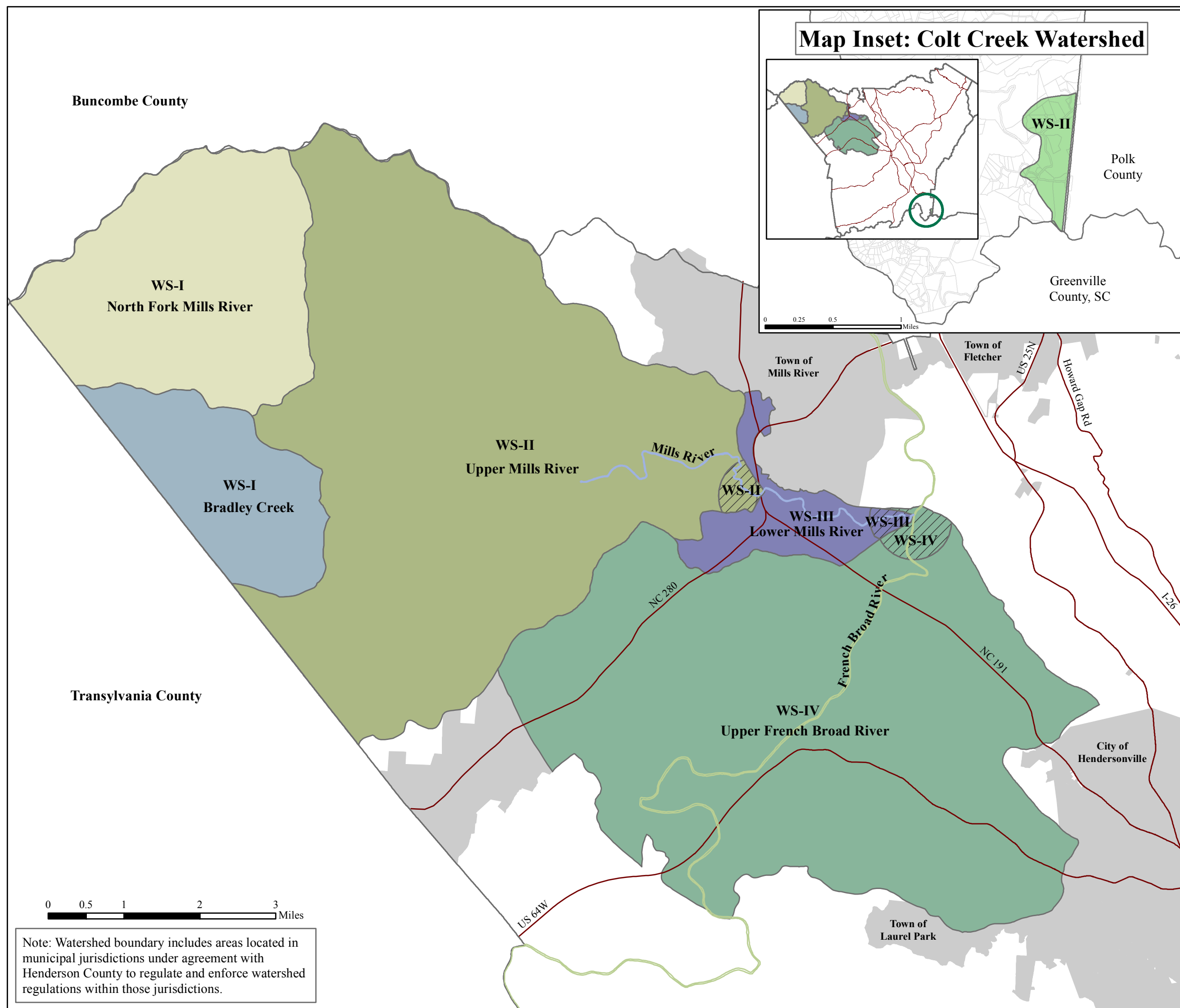
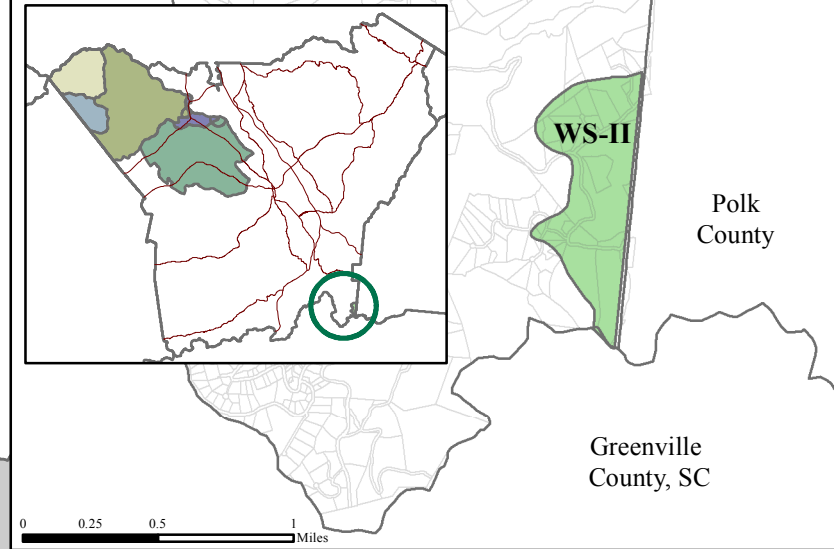
Henderson County Official Water Supply Watershed Map

(Adopted March 2, 2015 by
Henderson County Board of Commissioners)

Legend

-  Major Roads
-  Municipal Boundaries (Includes ETJ)
- Rivers/Streams**
 -  French Broad River
 -  Mills River
- Water Supply Watersheds**
 -  Bradley Creek
 -  Colt Creek (See Map Inset)
 -  Lower Mills River
 -  North Fork Mills River
 -  Upper French Broad River
 -  Upper Mills River
 -  Critical Areas (1/2 mile from intake)

Map Inset: Colt Creek Watershed



Note: Watershed boundary includes areas located in municipal jurisdictions under agreement with Henderson County to regulate and enforce watershed regulations within those jurisdictions.



This map is prepared from the inventory of real property found within this jurisdiction, and is compiled from recorded deeds, plats, and other public records and data. Users of this map, are hereby notified that the aforementioned public primary information sources should be consulted for verification of the information contained on this map. The County and mapping company assume no legal responsibility for the information contained on this map.