

REQUEST FOR BOARD ACTION

HENDERSON COUNTY BOARD OF COMMISSIONERS

MEETING DATE: July 16, 2014

SUBJECT: Selection of Next Community Plan

PRESENTER: Autumn Radcliff, Senior Planner

ATTACHMENTS: 1. Community Planning Area Map

SUMMARY OF REQUEST:

The Henderson County 2020 Comprehensive Plan (CCP) recommended the creation of several community plans, four of which are complete (Dana, Etowah-Horse Shoe, Edneyville, and Green River-Tuxedo-Zirconia (GRTZ)). At the direction of the Board, the Planning Department is prepared to begin the fifth community plan.

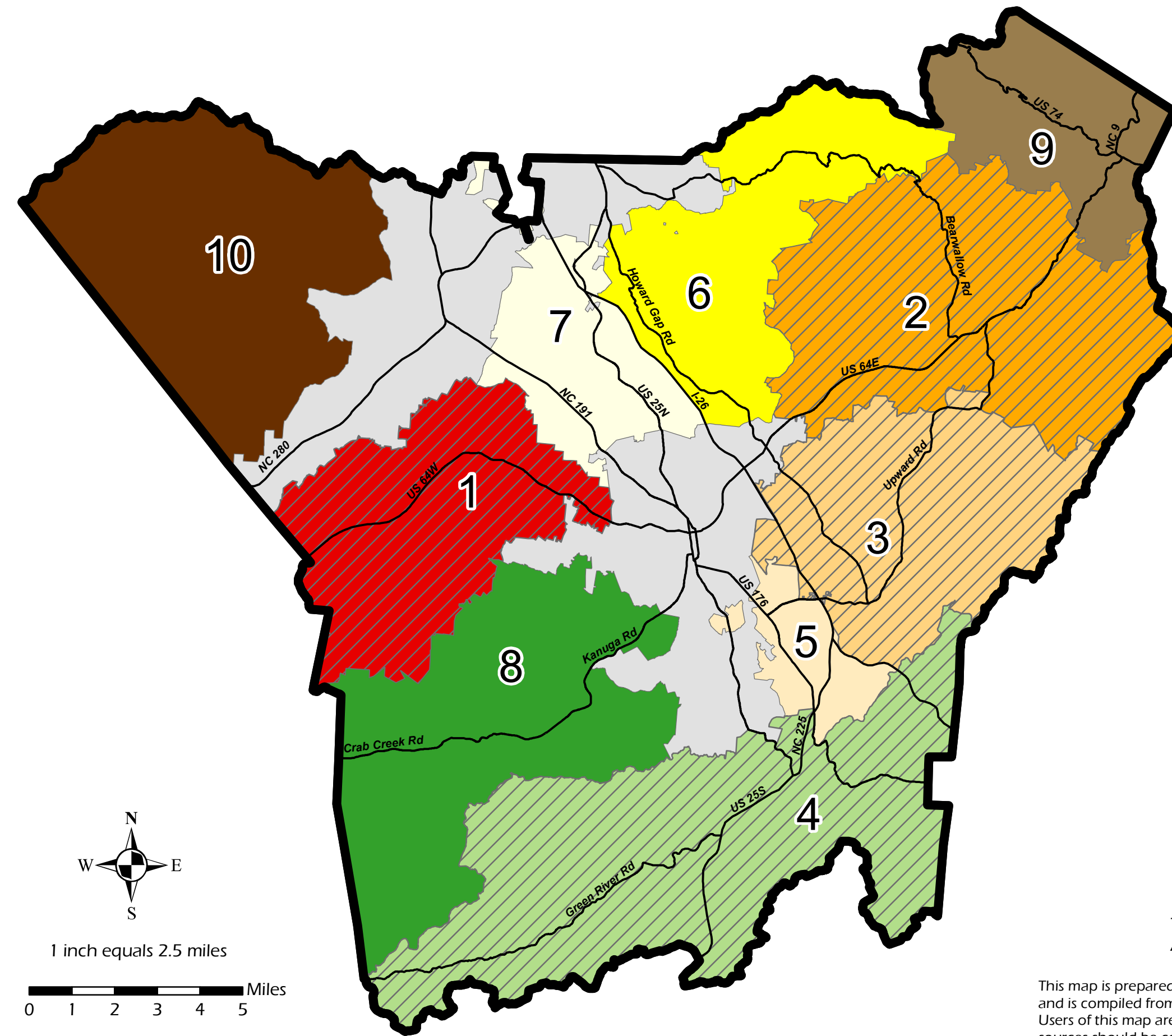
The CCP recommended a tentative schedule for the development of each community plan, but the plan selection is determined by the Board of Commissioners. The Dana Community Plan initially included the East Flat Rock area, but the Board voted to split these areas into two separate community plans. The GRTZ Community Plan was selected as the most recent community plan based on residents' concerns and the development of the Tuxedo Park.

The next community plan scheduled for development is the East Flat Rock area followed by the Hoopers Creek area (See Attached Map).

BOARD ACTION REQUESTED:

Planning Staff requests the Board of Commissioners select the next community planning area. The selection of an advisory committee and charter would begin in January of 2015. Selection of the fifth community planning area will allow staff the opportunity to begin the historical and demographic research of the area and to implement the rezoning recommendations for the Dana, Edneyville and GRTZ community plans.

Suggested Motion: I move that the Board select the _____ area for the fifth community planning area.



Community Planning Areas

- Major Roads
- Etowah & Horse Shoe (1-Complete)
- Edneyville (2-Complete)
- Dana (3-Complete)
- Green River/Tuxedo/Zirconia (4-Complete)
- East Flat Rock (5)
- Hoopers Creek (6)
- North-Central (7)
- Crab Creek (8)
- Gerton/Bat Cave (9)
- Pisgah Area (10)
- Municipal Limits

This map was produced by Henderson County GIS, Assessor's, Land Records, & Planning Departments.

This map is prepared for the inventory of real property found within this jurisdiction, and is compiled from recorded deeds, plats, and other public records and data. Users of this map are hereby notified that the aforementioned public primary information sources should be consulted for verification of the information contained on this map. The County and mapping company assume no legal responsibility for the information contained on this map.