

**REQUEST FOR BOARD ACTION**

**HENDERSON COUNTY  
BOARD OF COMMISSIONERS**

**MEETING DATE:** July 17, 2013  
**SUBJECT:** Asheville Airport Update  
**PRESENTER:** Lew Bleiweis  
**ATTACHMENTS:** No

**SUMMARY OF REQUEST:**

Lew Bleiweis, Airport Director at the Asheville Regional Airport, will make a presentation to the Board of Commissioners on the airport's Capital improvement Plan.

**BOARD ACTION REQUESTED:**

No action is requested. The presentation is for information purposes.

**Suggested Motion:**

No motion suggested.



---

# Asheville Regional Airport

A year-end review & looking forward.



---

## Today, we'll talk about...

- **QUICK FACTS:** Brief overview of Asheville Regional Airport
- **Economic importance**
  - National perspective: the airport industry
  - AVL's regional economic impact
- **2012 Review & Futurecast**



Brief Overview

## Asheville Regional Airport

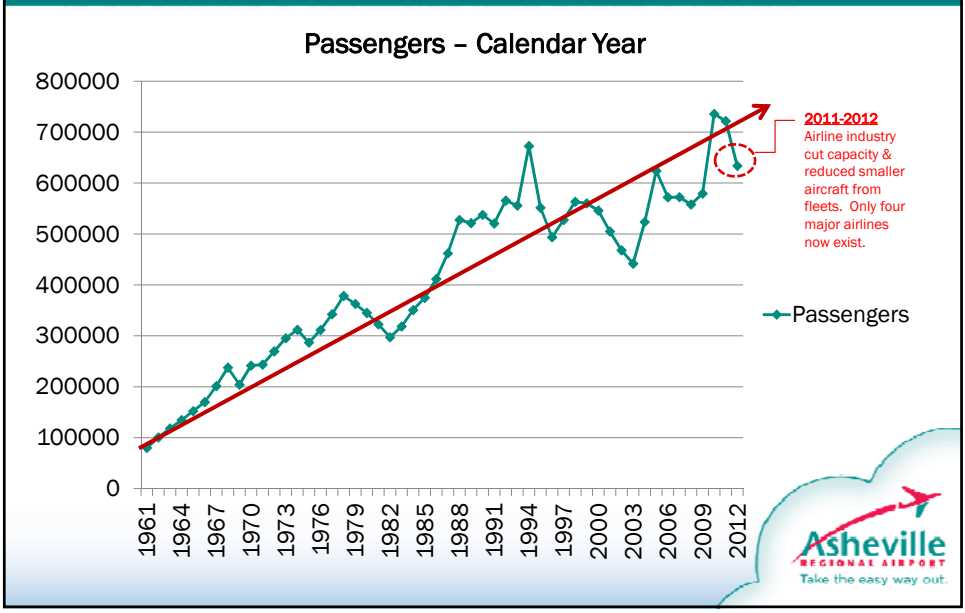


## Quick facts

- 8,001' runway
- Served by Allegiant Air, Delta, United and US Airways
- Approximately 24 flights/day
- 8 Nonstop destinations  
(9<sup>th</sup> begins June 6<sup>th</sup>)



### Long-term history shows growth in air service & utilization with peaks & valleys.

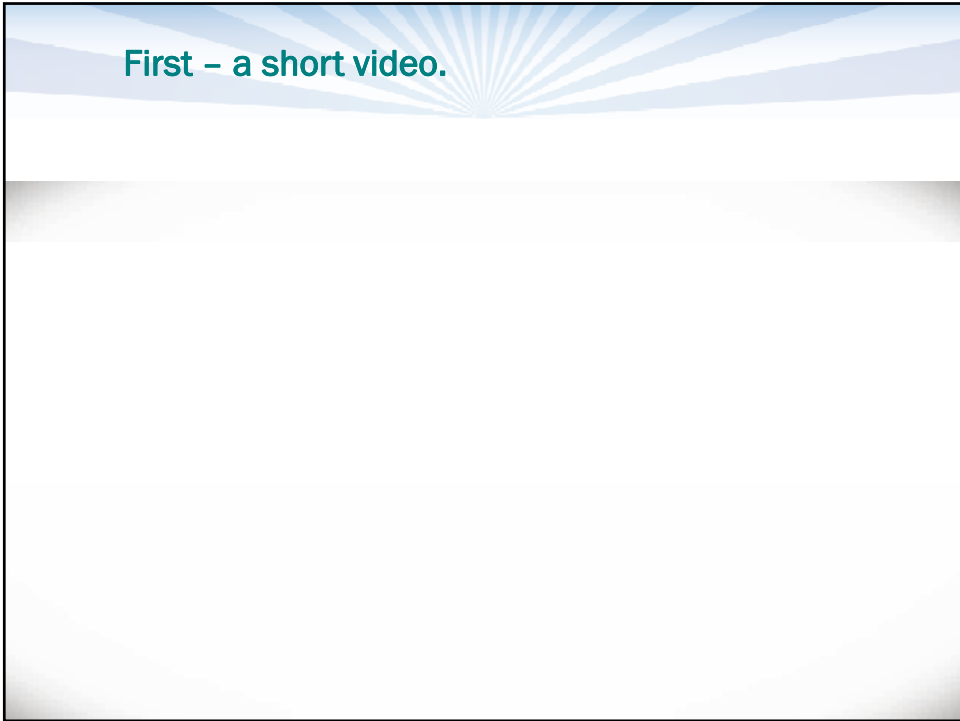


The importance of airports - an economic perspective.

### A national perspective, and the "AVL" story.



First – a short video.



## Airports – A Vital Transportation System



**10,500**

Global destinations are connected to US airports—and it would take 28 years to visit them all.



**730 MILLION**

Passengers travel through America's airports yearly.

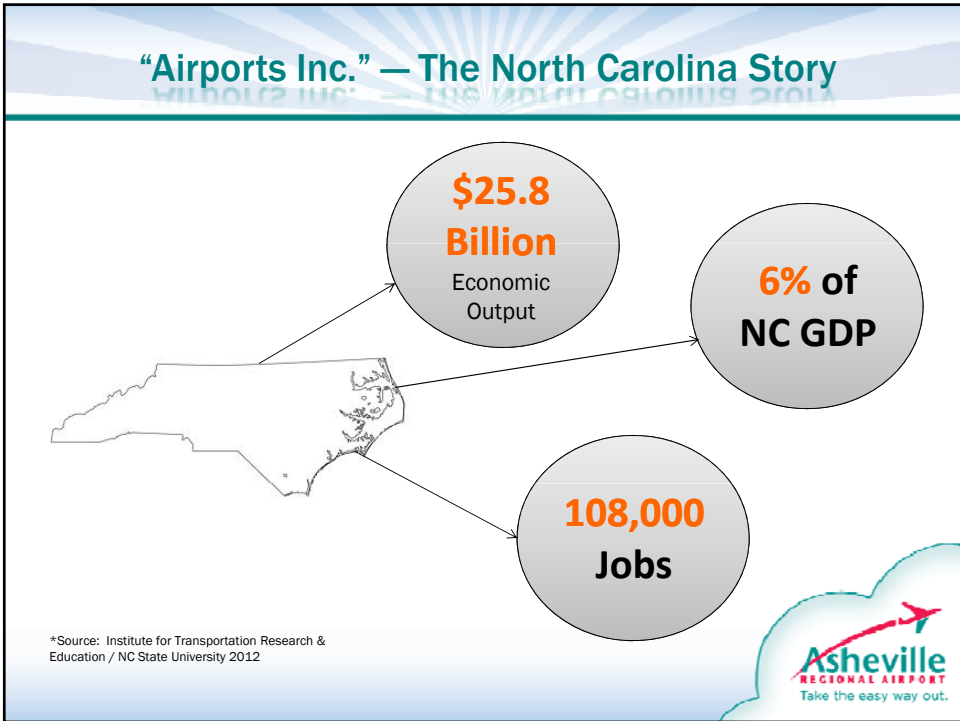
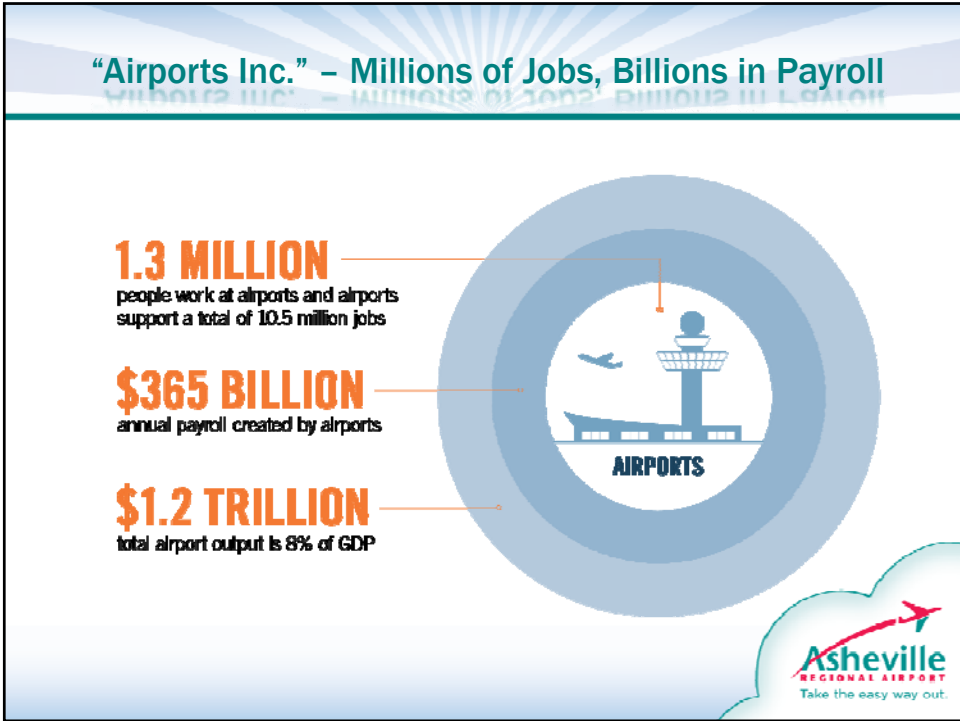
**That is 2 million every day!**



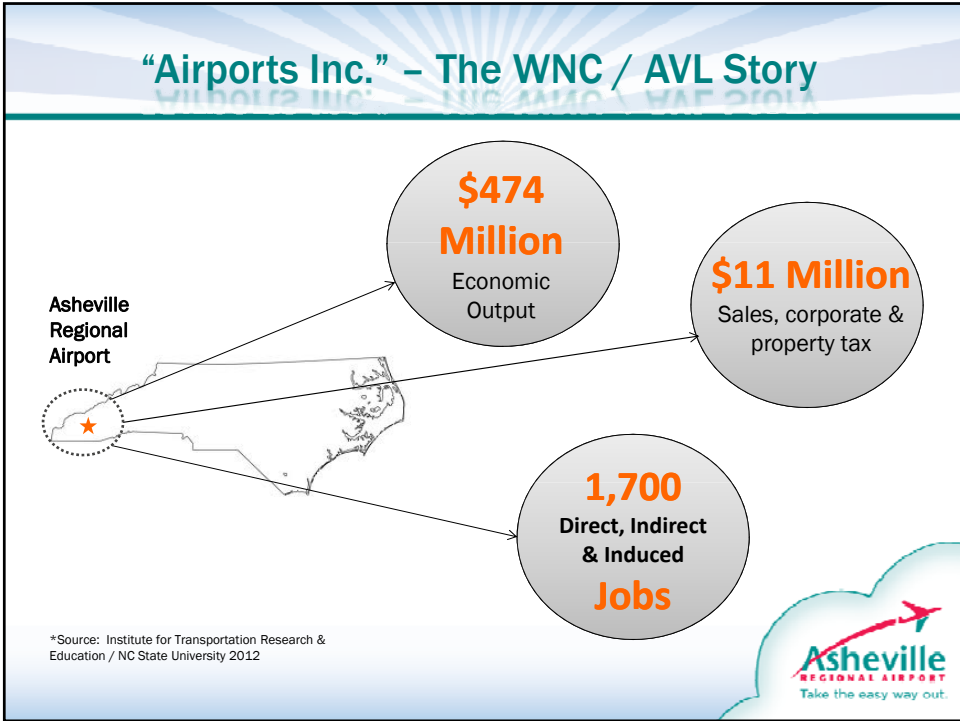
**65 TRILLION**

Tons of cargo are loaded at American airports yearly.





\*Source: Institute for Transportation Research & Education / NC State University 2012



A year in review: 2012

**Growth.  
Community Involvement.  
Our stats.**



## Our growth in 2012

- **Development**
  - Jet bridges





## Our growth in 2012

### ➤ Development

- New public safety facility design & new ARFF vehicle



## Our growth in 2012

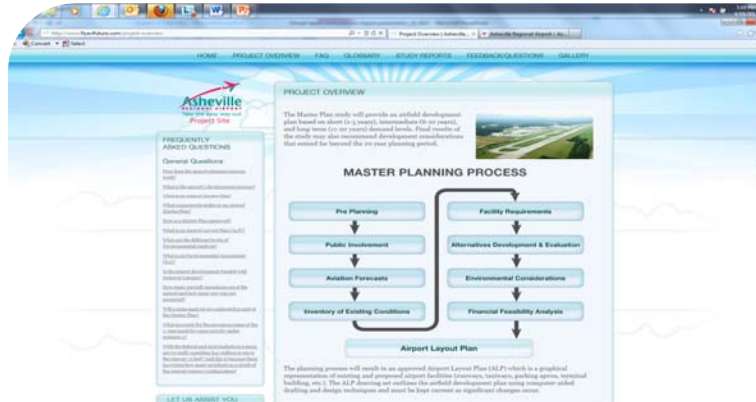
### ➤ Development

- West-side fill project



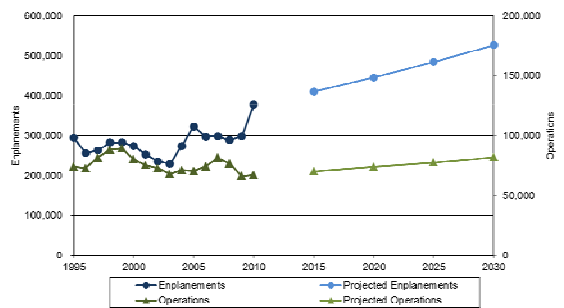
# Our growth in 2012

- Longer-term planning & development
- Updated Airport Master Plan



# Our growth in 2012 Forecast summary

Year	Enplanements	Operations				Total	Total Freight	Based Aircraft
		Commercial Air Carrier	General Aviation	Military				
<b>Historical</b>								
2008	289,215	20,376	52,912	3,552	76,840	146,886	141	
2009	298,865	17,597	45,125	3,715	66,437	133,768	160	
2010	378,087	20,765	41,752	4,823	67,340	127,943	174	
<b>Projected</b>								
2015	410,793	20,922	45,306	4,028	70,255	158,250	184	
2020	446,328	21,780	48,285	4,028	74,093	178,087	195	
2025	484,937	22,074	51,547	4,028	77,648	199,453	206	
2030	526,886	22,922	55,097	4,028	82,047	221,680	217	
CAGR (2010-2030)	1.67%	0.50%	1.40%	-0.90%	0.99%	2.79%	1.11%	





## Our growth in 2012

### ➤ Air Service

- While the overall air service offerings contracted nationally for small airports, AVL welcomed a **new low-cost route to Fort Lauderdale**.
- Small Community Air Service Development **grant recipient** to attract non-stop to Denver.
- Mainline Delta service



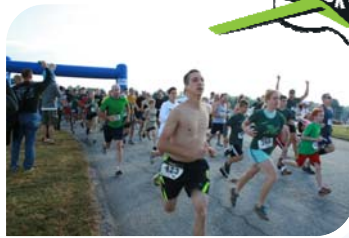
## A new Independent Airport Authority

- State sanctioned, as of June 28, 2012
- Allows more efficient operation
- Provides for more regional representation
- In final transition to the new structure



### A few more highlights from 2012

- Crisis training
- Employee wellness
- Community Involvement



### 2012 Stats

➤ Enplanements	356,098
➤ Total net assets	\$78 million
➤ GARAA employees	56
➤ Sources of Revenue	
– Airlines	24%
– Concessions	3%
– FBO/General Aviation	11%
– Federal Government (FAA)	4%
– Parking	30%
– Rental Cars	23%
– Other	5%

What's next?

---

## A look to the future



The Asheville Regional Airport logo is located in the bottom right corner of the slide. It features a stylized red and blue arrow pointing upwards and to the right, with the text "Asheville REGIONAL AIRPORT" and the slogan "Take the easy way out." below it.

## A changing industry

---

### National trends affecting regional airports and AVL:

- Airline trends
- Washington, D.C.
- The economy



The image shows the tail and wing of a white airplane with a red and blue tail fin, parked on a tarmac. The background shows a sunset or sunrise over a line of trees.

The Asheville Regional Airport logo is located in the bottom right corner of the slide. It features a stylized red and blue arrow pointing upwards and to the right, with the text "Asheville REGIONAL AIRPORT" and the slogan "Take the easy way out." below it.

## And last ... some food for thought.

A mile of pavement can take you a mile down the road.

**A mile of RUNWAY can take you anywhere in the world ... or bring the world to Western North Carolina.**



## Questions?

