

## **REQUEST FOR BOARD ACTION**

### **HENDERSON COUNTY BOARD OF COMMISSIONERS**

**MEETING DATE:** June 4, 2012

**SUBJECT:** Traffic Calming Measures in Jackson Park

**PRESENTER:** Tim Hopkin, Parks and Recreation Director

**ATTACHMENTS:** YES

#### **SUMMARY OF REQUEST:**

As Jackson Park continues to be used as a way to cut through from one side of town to another, measures to curb the speed of vehicles and ensure public safety must be taken. As more and more park users choose to enjoy the trails and greenway in Jackson Park, the safety of these park users must be considered. As walkers, runners, and cyclists look to cross the park road (4<sup>th</sup> Ave. East) at the speed tables/cross walks it is safest if traffic comes to a full stop. The drivers that currently travel into, out of and just through the park have a tendency to use excessive speed traveling through the eastern side of the park.

#### **BOARD ACTION REQUESTED:**

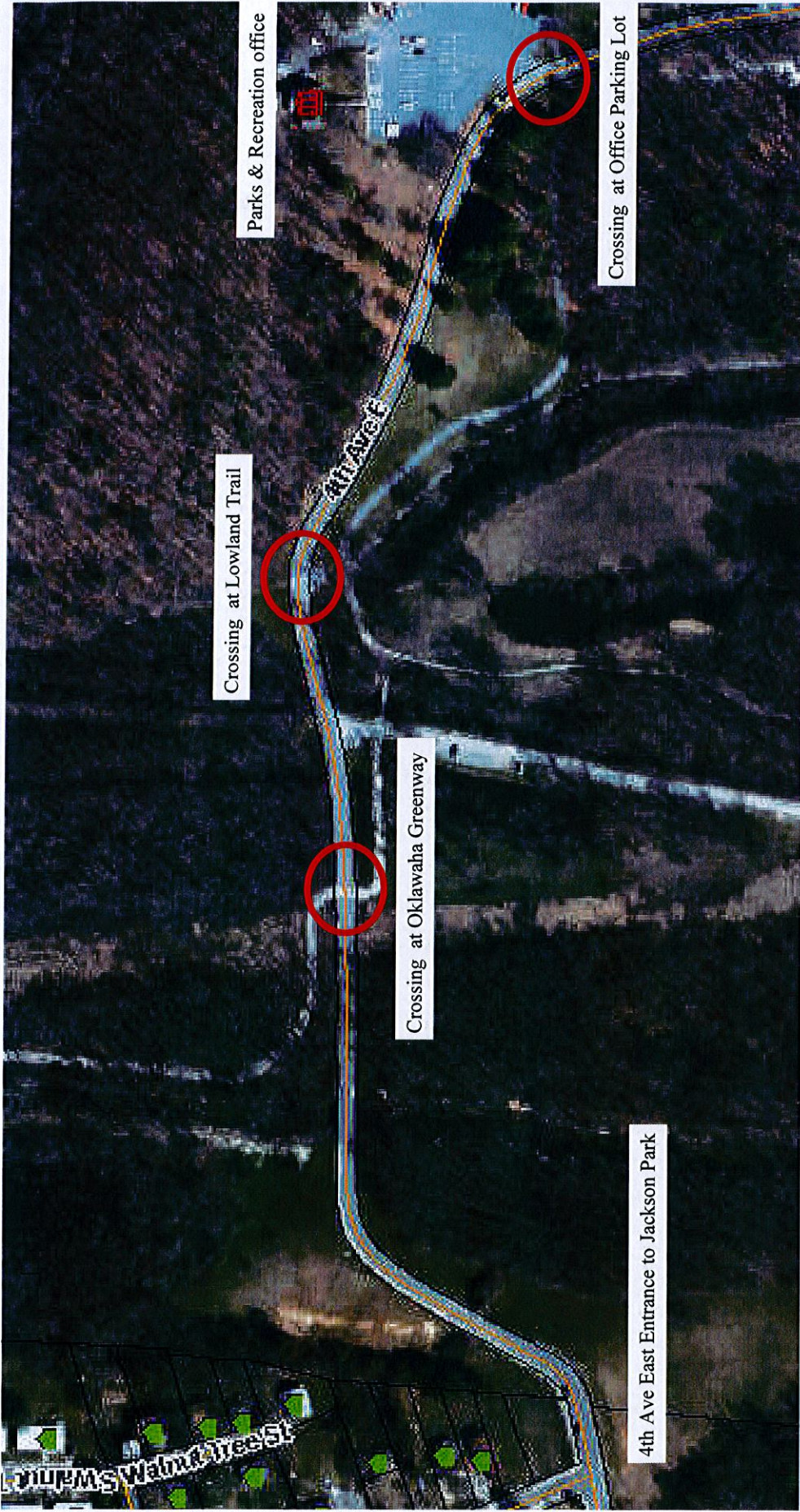
Staff is supportive of the proposal to add traffic calming measures to enhance safety along 4th Ave. East in Jackson Park. It is requested that the Board of Commissioners discuss possible options.

- Add 2-Way stop signs at the 3 cross walks along 4<sup>th</sup> Ave East leading to Parks and Recreation office.
- Add 3-Way stop signs at the road leading to former BMX/Dog Area and at the entrance to Parks and Recreation office parking lot.
- Redesign the speed tables to ensure that speed is reduced at designated cross walks.
- Leave the road as it is.

#### **Suggested Motion:**

*No motion suggested.*





## Proposed Traffic Calming measures for Jackson Park.

The addition of two way stop signs at the speed table crossings on the east side of the park. Six stop signs and road markings would be added to help regulate the traffic coming through the park.





Crossing at Oklawaha Greeway headed into the park.



Crossing at Oklawaha Greeway headed out of the park.





Crossing at Lowland Trail headed into the park.





Crossing at Lowland Trail headed out of the park.





Crossing at Office Parking Lot.





Crossing at Office Parking Lot.



LARGE 24" x 24" TRAFFIC CONTROL SIGNS



6 Reflective Aluminum Signs and Posts - \$160 each