

REQUEST FOR BOARD ACTION

HENDERSON COUNTY BOARD OF COMMISSIONERS

MEETING DATE: March 18, 2009

SUBJECT: Proposed Intake on the French Broad River and Expanded Water Supply Watershed Boundary

ATTACHMENTS:

1. Location of Proposed Intake on the French Broad River and the Expanded Watershed Boundary (Map provided by DWQ)
2. Location of Proposed Intake on the French Broad River and the Expanded Watershed Boundary and the Town of Mills River's Jurisdiction

SUMMARY OF REQUEST:

The N.C. Department of Environment and Natural Resources (DENR) Division of Water Quality (DWQ) is considering a new proposed surface water intake for the City of Hendersonville on the French Broad River north of the confluence of Mills River (refer to attachments 1). The proposed intake will allow the City to continue to supply water to customers during drought conditions that might deplete the amount of surface water available on Mills River where the existing intake is located. The proposed intake would require that the existing WS-II Balance of Watershed and Critical Area be expanded. This expansion would include a small portion of land located within the Town of Mills River (refer to attachment 2). This expanded reclassification area is mostly farmland. Agriculture is a permitted use in the water supply watershed districts.

In addition to this expansion, the DWQ has discovered an error with the existing Water Supply Watershed boundary based on the location of the existing intakes. The boundaries are set by the DWQ. As a result, the boundaries of our current WS-II watershed will need to be corrected. We are waiting on GIS layers to determine the parcels that may be impacted by this correction. Staff anticipates that these corrections can be adopted by the Board at the same time the expanded reclassification area for the new proposed intake is adopted. Both of these amendments require a public hearing by the Board of Commissioners upon approval by the State.

The Environmental Management Commission (EMS) approves any new intakes and reclassifications. Once approved by the EMC, the Rules Review Commission reviews the document. At that point, the State is complete and the local jurisdictions have 270 days to adopt the watershed map and regulations. It is uncertain what the expected timeframe for adoption is at this point. The State requests that the Board provide a resolution for support, opposition, or neutral stance for the State to proceed to the Water Quality Committee. A resolution for the Town of Mills River will also be needed before the State can proceed with the request.

Staff is actively working to contact the State in regards to the timeframe of adoption and obtain additional information on the existing WS-II boundaries to be corrected. Any additional information obtained after the printing of this agenda will be presented to the Board at the meeting.

BOARD ACTION REQUESTED:

If the Board supports the proposed intake on the French Broad River by the City of Hendersonville than a resolution of support or opposition will need to be passed at a future meeting in order for the State to proceed with Hendersonville's request.

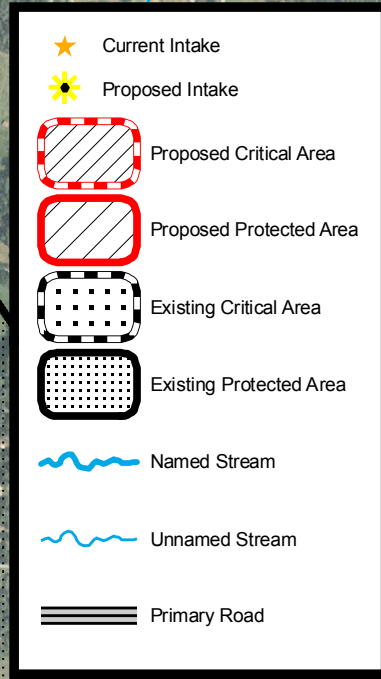
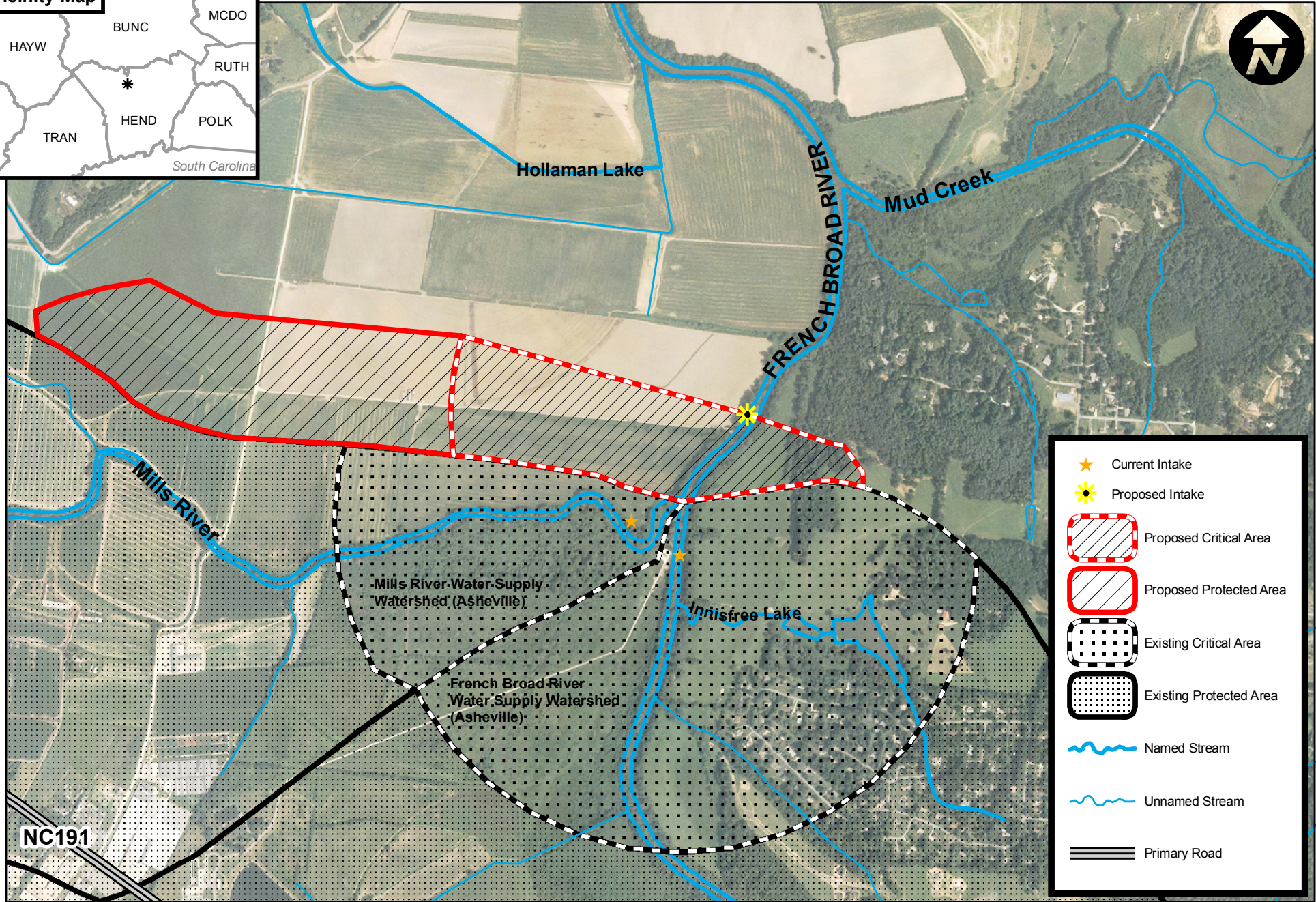
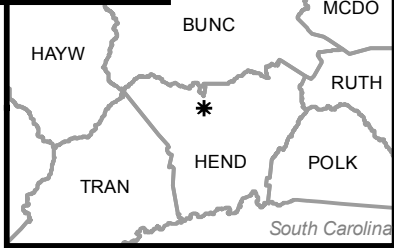
Suggested Motion:

None Suggested.

French Broad River Proposed WS-IV Reclassification

Henderson County, French Broad River Basin, North Carolina

Vicinity Map

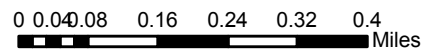


C:\M\F_PROJECTS\Balsy\FrenchBroadRiver_Proposed_WSWS_HendersonCounty_3dec2008\FrenchBroadRiver_Proposed_WSWS_HendersonCounty_DESC_AERIAL_16Jan2009.mxd

Map Source: NCDWQ Classifications & Standards Unit; Published 22Jan2009 - Water Supply Watershed Source: NCDWQ; Published 2007
 Primary Road Source: NCDOT; Published Aug 2007 - Hydrography Source: NCDWQ; Published Nov 2007



This map is only as good as the data available when it was printed and is not intended to replace any rule, regulation or classification schedule.
 North Carolina Division of Water Quality | <http://h2o.enr.state.nc.us> | 512 N. Salisbury St., Raleigh, NC 27604 (919)807-6300



Existing and Proposed Water Supply Watersheds

