

# **REQUEST FOR BOARD ACTION**

## **Henderson County Board of Commissioners**

- Meeting Date:** July 16, 2008
- Subject:** Map Amendments to the Henderson County 2020 Comprehensive Plan (CCP)
- Attachments:**
1. CCP Growth Management Strategy Map
  2. CCP Future Land Use Map

### **Summary of Request:**

On Thursday, March 27, 2008, the Board of Commissioners held a public hearing on proposed text and map amendments to the Henderson County 2020 Comprehensive Plan (CCP). On Monday, April 7, 2008, the Board tabled its decision on the proposed CCP map amendments to the Growth Management Strategy and Future Land Use maps. The item was tabled in order for the Board to make a decision on applications for proposed map amendments to the LDC that could impact the proposed amendments to the CCP maps. The attached CCP maps have not been revised since last reviewed by the Board but they do reflect the approved map amendments to the LDC.

### **Board Action Request:**







Action by the Board of Commissioners is needed to either approve or deny the proposed map amendments to the CCP. If the Board decides to approve the proposed amendments the following motion has been provided.

### **Suggested Motion:**

I move that the Board approve the attached proposed map amendments to the Henderson County 2020 Comprehensive Plan amending the Growth Management Strategy map and Future Land Use map.

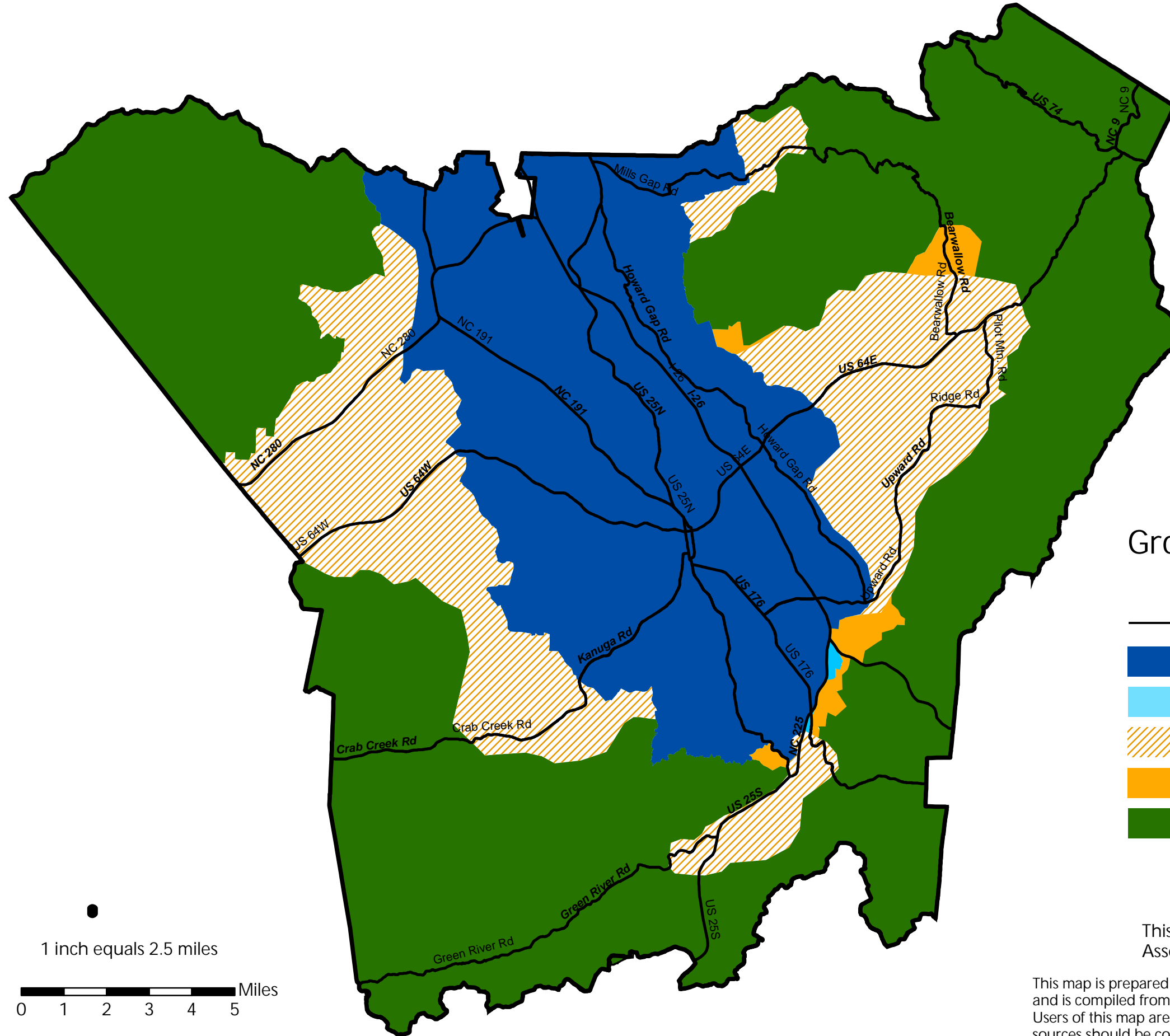
# Henderson County 2020 Comprehensive Plan

## Growth Management Strategy

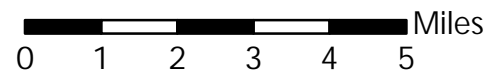
-  Major Roads
-  Urban Service Area
-  Expanded Urban Service Area
-  Rural/Urban Transition Area
-  Expanded Rural/Urban Transition Area
-  Rural/Agricultural Areas

This map was produced by Henderson County GIS, Assessor's, Land Records, & Planning Departments.







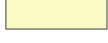

This map is prepared for the inventory of real property found within this jurisdiction, and is compiled from recorded deeds, plats, and other public records and data. Users of this map are hereby notified that the aforementioned public primary information sources should be consulted for verification of the information contained on this map. The County and mapping company assume no legal responsibility for the information contained on this map.

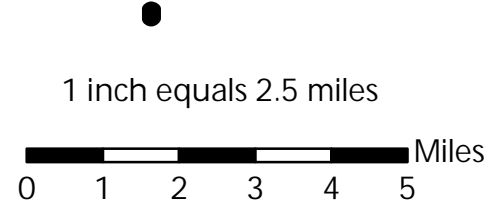
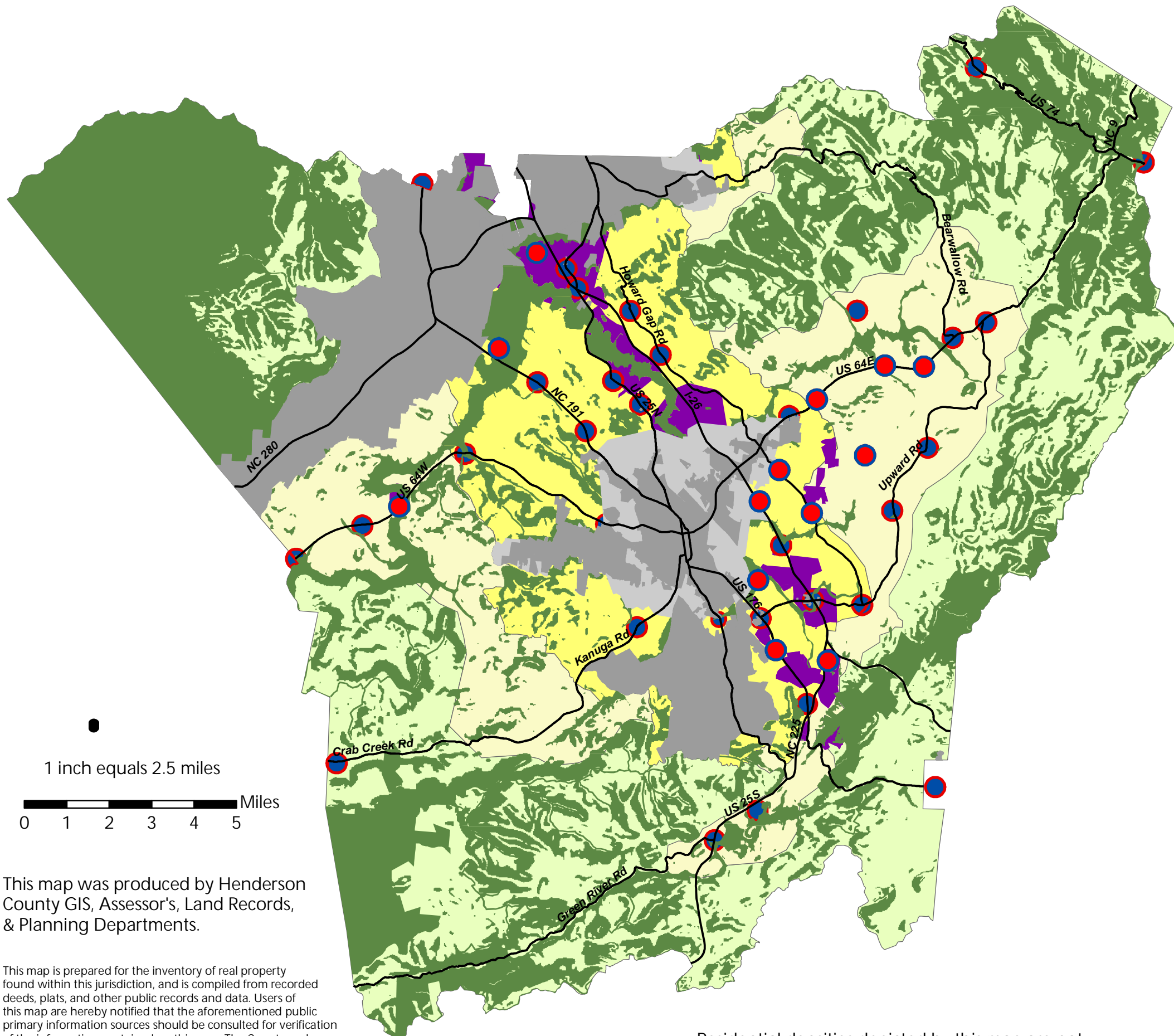


1 inch equals 2.5 miles



# Henderson County Comprehensive Plan Future Land Use\*

-  Major Roads
-  Proposed New Community Service Centers
-  Community Service Center
-  Industrial
-  Conservation
-  Rural/Agricultural Areas
-  Rural/Urban Transition Areas
-  Urban Services Area



This map was produced by Henderson County GIS, Assessor's, Land Records, & Planning Departments.

This map is prepared for the inventory of real property found within this jurisdiction, and is compiled from recorded deeds, plats, and other public records and data. Users of this map are hereby notified that the aforementioned public primary information sources should be consulted for verification of the information contained on this map. The County and mapping company assume no legal responsibility for the information contained on this map.

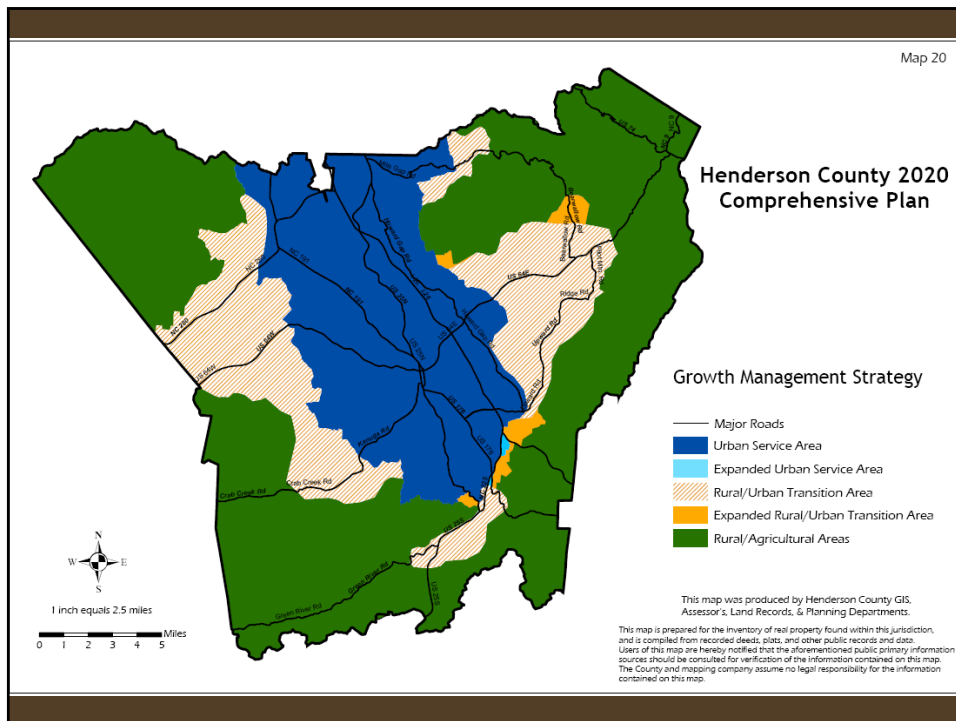
Residential densities depicted by this map are not absolute. Density will vary within these areas as determined by Community Plans.

\* This Future Land Use Map is not intended to provide precise, site-level details as to future land use. Rather, it is intended to serve as a general guide for important infrastructural, zoning, and other decisions. This map is subject to change and will be regularly updated.

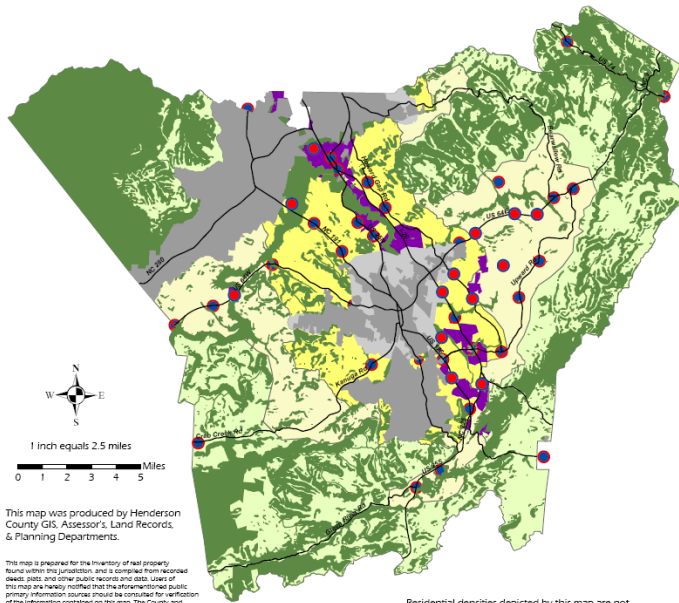
\*\* Community Service Centers: Intended to contain a mixture of Commercial, Community Facility, and Dense Residential uses; intended to depict general location only, actual size, shape, and range and intensity of uses therein shall be determined by Community Plans and other detailed studies; other Community Service Centers may be identified in the future.

# Map Amendments to the Henderson County 2020 Comprehensive Plan

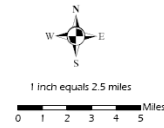
Board of Commissioners meeting July 16, 2008



### Henderson County Comprehensive Plan Future Land Use\*



- Major Roads
- Proposed New Community Service Centers
- Community Service Center
- Industrial
- Conservation
- Rural/Agricultural Areas
- Rural/Urban Transition Areas
- Urban Services Area



This map was produced by Henderson County GIS, Assessor's, Land Records, & Planning Departments.

This map is prepared for the inventory of real property found within the jurisdiction, and is compiled from recorded deeds, plats and other public records and data. Users of this map are hereby notified that the aforementioned public primary information sources should be consulted for verification of the information contained on this map. The County and mapping company assume no legal responsibility for the information contained on this map.

Residential densities depicted by this map are not absolute. Density will vary within these areas as determined by Community Plans.

\* This Future Land Use Map is not intended to provide precise, site-level details as to future land use. Rather, it is intended to serve as a general guide for important infrastructural, zoning, and other decisions. This map is subject to change and will be regularly updated.

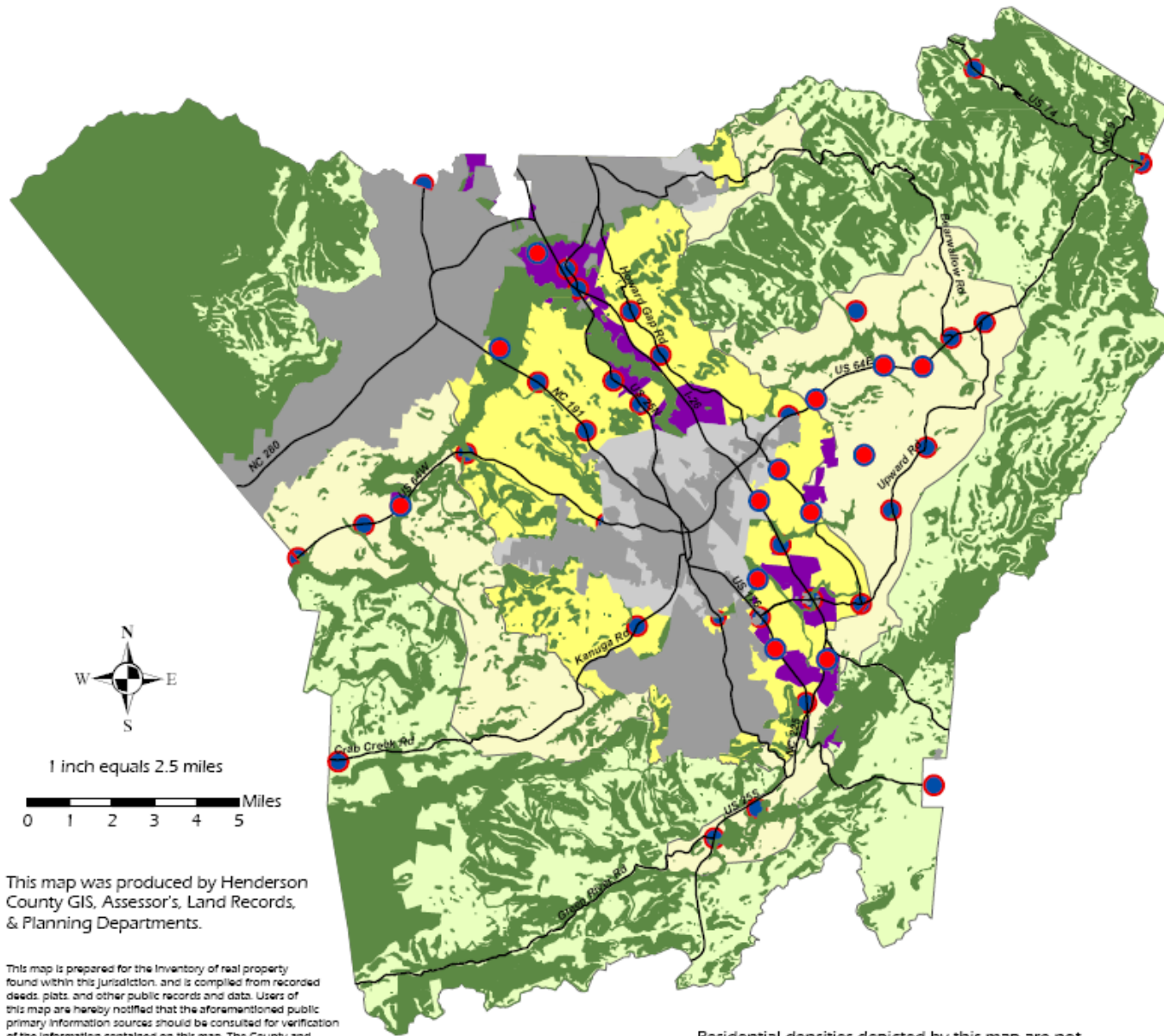
\*\* Community Service Centers: Intended to contain a mixture of Commercial, Community Facility, and Dense Residential uses; intended to depict general location only, actual size, shape, and range and intensity of uses therein shall be determined by Community Plans and other detailed studies; other Community Service Centers may be identified in the future.

# Map Amendments to the Henderson County 2020 Comprehensive Plan

Board of Commissioners meeting July 16, 2008



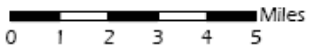
# Henderson County Comprehensive Plan Future Land Use\*



- Major Roads
- Proposed New Community Service Centers
- Community Service Center
- Industrial
- Conservation
- Rural/Agricultural Areas
- Rural/Urban Transition Areas
- Urban Services Area



1 inch equals 2.5 miles



This map was produced by Henderson County GIS, Assessor's, Land Records, & Planning Departments.

This map is prepared for the Inventory of real property found within this jurisdiction, and is compiled from recorded deeds, plats, and other public records and data. Users of this map are hereby notified that the aforementioned public primary information sources should be consulted for verification of the information contained on this map. The County and mapping company assume no legal responsibility for the information contained on this map.

Residential densities depicted by this map are not absolute. Density will vary within these areas as determined by Community Plans.

\* This Future Land Use Map is not intended to provide precise, site-level details as to future land use. Rather, it is intended to serve as a general guide for important infrastructural, zoning, and other decisions. This map is subject to change and will be regularly updated.

\*\* Community Service Centers: Intended to contain a mixture of Commercial, Community Facility, and Dense Residential uses; intended to depict general location only, actual size, shape, and range and intensity of uses therein shall be determined by Community Plans and other detailed studies; other Community Service Centers may be identified in the future.