

REQUEST FOR BOARD ACTION

HENDERSON COUNTY BOARD OF COMMISSIONERS

MEETING DATE: August 14, 2007

SUBJECT: Consideration of the Etowah-Horse Shoe Community Planning Committee Charter

ATTACHMENTS:

1. Staff Memorandum
2. Community Planning Process Outline
3. Draft Etowah-Horse Shoe Community Planning Committee Charter with Map

SUMMARY OF REQUEST:

The Board of Commissioners directed staff to begin the Etowah-Horse Shoe Community Planning Process for the creation of a Community Plan. The first required steps are the approval of a committee charter and the appointment of members to that committee. The enclosed memorandum, outline and draft charter explain the process and responsibilities required to accomplish this task.

BOARD ACTION REQUESTED:

Planning Staff requests the Board of Commissioners approve the draft charter and begin appointing committee members should the Board desire to proceed with the creation of this plan.

Suggested Motion: I move that the Board approve the Charter for the Etowah-Horse Shoe Community Planning Committee with any amendments noted by the Board.

MEMORANDUM

TO: Board of Commissioners
Steve Wyatt, County Manager
Selena Coffey, Assistant County Manager

FROM: Anthony Starr, Planning Director

DATE: July 31, 2007

SUBJECT: Etowah/Horse Shoe Community Plan Start-up

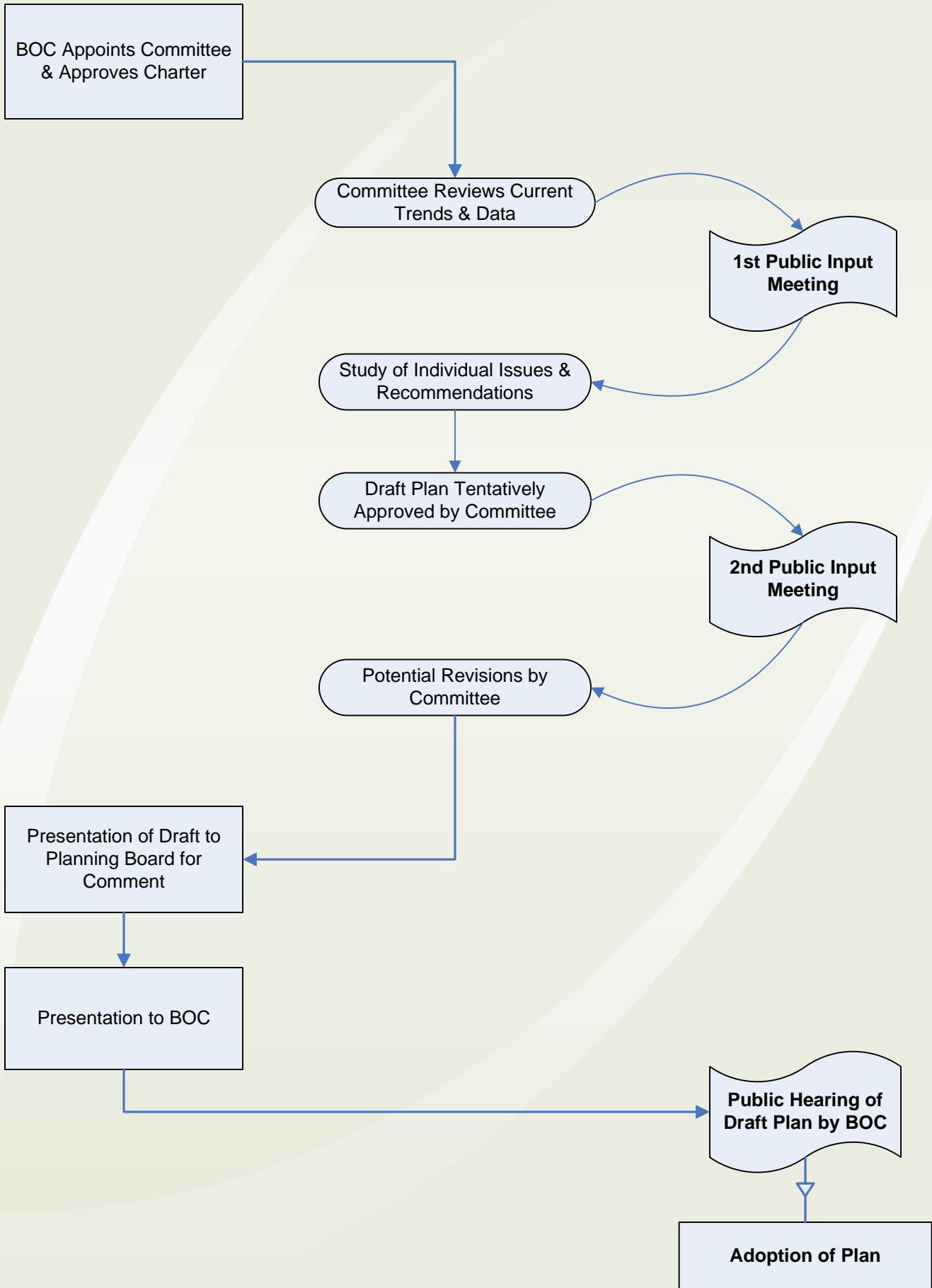
As directed by the Board of Commissioners, Planning Staff anticipates beginning the community planning process as recommended by the Henderson County 2020 Comprehensive Plan (CCP). The CCP identifies the Etowah/Horse Shoe Community as one of the first areas for creating a community plan. Planning Staff anticipates that the Etowah/Horse Shoe Community Plan will take approximately 18-24 months to be completed and adopted by the Board of Commissioners.

Staff proposes that the Etowah/Horse Shoe area will have a community advisory committee with 7 members that will consist of the following: citizens that live, operate a business, or own property in the boundary of the Etowah/Horse Shoe Community Plan, and one liaison from the Henderson County Planning Board. It may be likely that the Planning Board liaison also lives in the study area. Staff proposes that the Board of Commissioners appoint all committee members and the Chair. The appointment of municipal representatives from each adjoining municipality (Mills River, Laurel Park and Hendersonville) may provide better coordinated planning through this process. The coordination of planning among local governments in Henderson County is a goal of the CCP.

Please review the enclosed draft charter for the Etowah/Horse Shoe Community Planning Committee, outline for the Etowah/Horse Shoe Community Planning process, and the boundary map for the Etowah/Horse Shoe Community Plan. Planning Staff proposes a proven planning process that can generate a high-quality and useful plan using the wisdom and resources of the Etowah-Horse Shoe Community. With the creation and implementation of this plan, the Etowah-Horse Shoe Community can articulate and realize its vision for the next 10-15 years.

Should the Board desire to proceed with this planning process, staff could begin committee meetings in October provided the charter is approved in August and the committee appointed in September. This timeframe allows the committee to hold the first public input session prior to the November and December Holidays.

Community Planning Process



**HENDERSON COUNTY
ETOWAH/HORSE SHOE COMMUNITY PLANNING COMMITTEE
CHARTER**

What is the committee's purpose?

To implement the recommendations of the Henderson County 2020 Comprehensive Plan by working with Planning Staff to develop and recommend a community-specific comprehensive plan for the Etowah/Horse Shoe Community that outlines the future goals of area as it relates to Land Use and Development, Community Facilities, Agriculture, Economic Development, Housing, Transportation/Access Management, Community Character and Design, and Natural/Cultural Resources. The committee will serve in an advisory role to the Board of Commissioners for recommending policies specific to the study area.

Who will the committee report to?

Board of Commissioners

Who will be staff to the committee?

- County Planning Staff will facilitate committee meetings
- Other county staff as assigned

What is the duration of the committee's existence?

The committee will terminate with the adoption of the Etowah/Horse Shoe Community Plan.

How will the future tasks or projects of the committee be determined?

Assignment by the Board of Commissioners

What parameters must the committee work within?

- North Carolina Open Meetings and Public Records laws
- Minutes must be provided to the Board of Commissioners

Will the committee give periodic reports on its activities?**How often?**

Quarterly

As Need/As Requested

To whom?

Board of Commissioners and County Manager

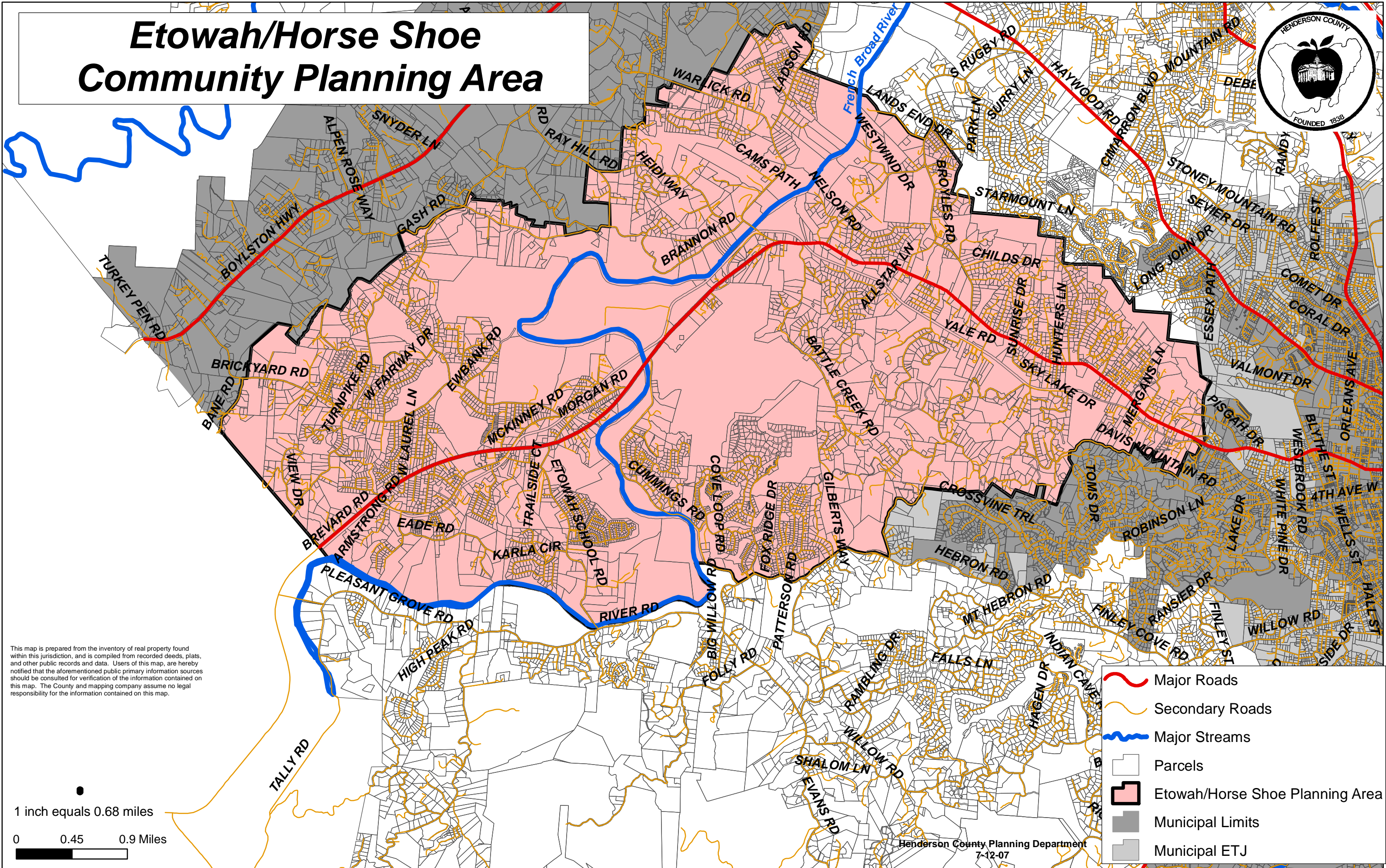
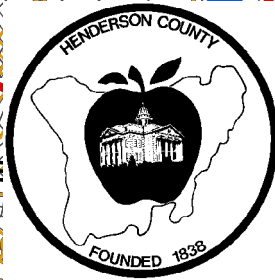
What is the make-up of the committee?

The committee, appointed by the Board of Commissioners, will consist of a total of 7 individuals that live, operate a business, or own property within the boundary of the Etowah/Horse Shoe Community Plan and one liaison from the Henderson County Planning Board. The Planning Board liaison shall be a voting member. The Board may also appoint ex-officio members from municipalities that abut the study area to serve as representatives of those municipalities.

Who selects the leaders of the committee?

Board of Commissioners appoints the Chair.








Etowah/Horse Shoe Community Planning Area



This map is prepared from the inventory of real property found within this jurisdiction, and is compiled from recorded deeds, plats, and other public records and data. Users of this map, are hereby notified that the aforementioned public primary information sources should be consulted for verification of the information contained on this map. The County and mapping company assume no legal responsibility for the information contained on this map.

1 inch equals 0.68 miles
0 0.45 0.9 Miles

Henderson County Planning Department
7-12-07

-  Major Roads
-  Secondary Roads
-  Major Streams
-  Parcels
-  Etowah/Horse Shoe Planning Area
-  Municipal Limits
-  Municipal ETJ