

# **REQUEST FOR BOARD ACTION**

## **HENDERSON COUNTY BOARD OF COMMISSIONERS**

**MEETING DATE:** March 9, 2005

**SUBJECT:** Historic Courthouse Corporation

**ATTACHMENTS:** Yes

### **SUMMARY OF REQUEST:**

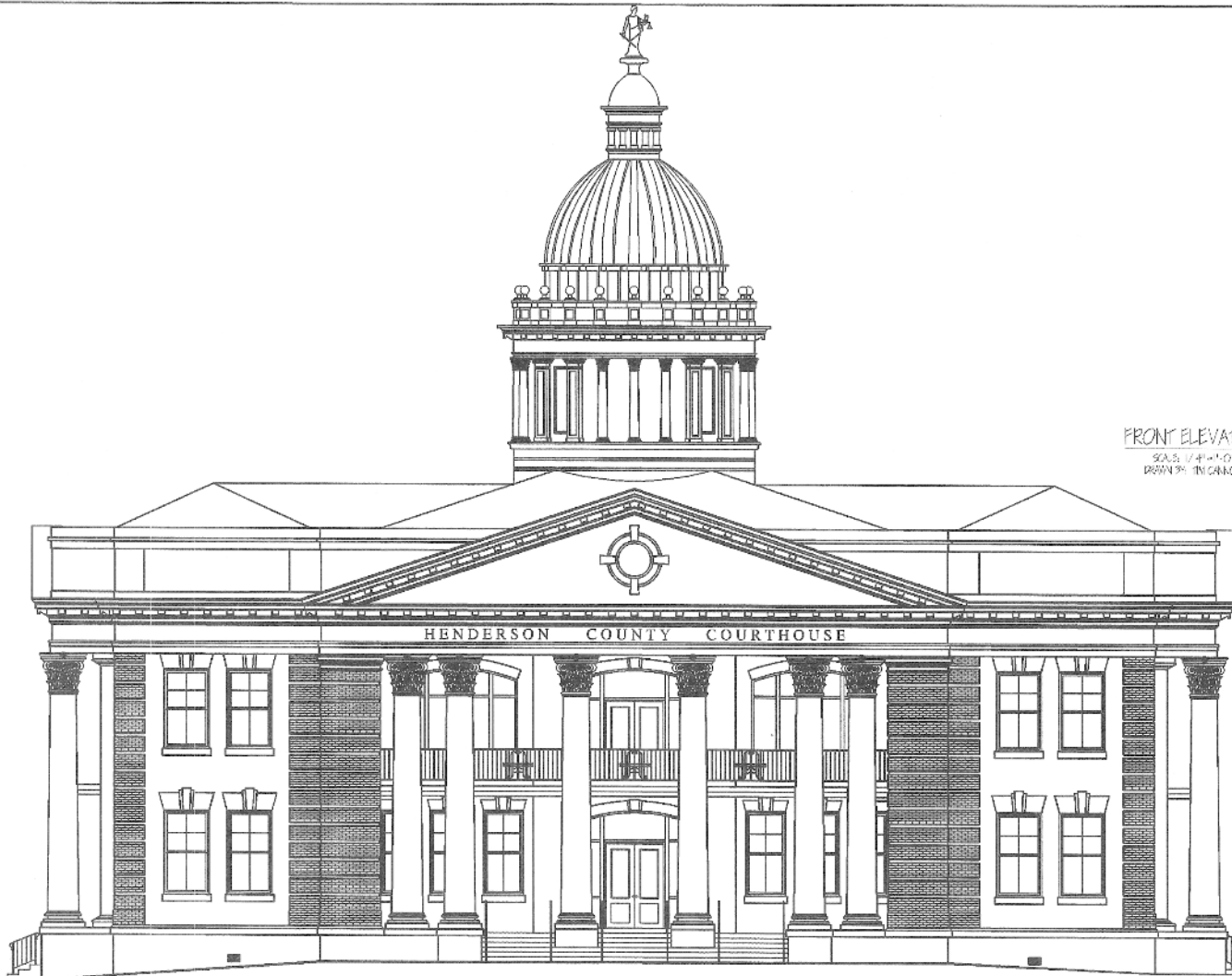
**Representatives from the Historic Courthouse Corporation will update the Board on their latest design proposal. The main features of the plan are the removal of the current annexes and replace them with a new larger annex that will house County Administration.**

**Attached are copies of the design that they will be presenting to the Board at this evening's meeting.**

### **COUNTY MANAGER RECOMMENDATION/BOARD ACTION REQUESTED:**

**I have been working with the Corporation and our architect on this proposal. This plan would allow for a much larger historical presence in the Historic Courthouse than would the original plan that I developed. Federal funding still remains the issue. I have spoken to representatives from Congressman Taylor's office concerning our reservations about the grant.**

**I told the members of the Corporation Board that in order to really consider their plan we would need to receive additional Federal Funds without all of the strings associated with Save America's Treasures. If not, the plan that I originally developed would have to be considered by the Board.**



FRONT ELEVATION

SCALE: 1/4"=1'-0"  
DRAWN BY: TIM CANNON

REVISIONS


SILVY STEEP, AIA ARCHITECT  
26669 SINGLE OAK CENTRE  
15708 C LAKE ROCK NC 28751  
828-696-4000



ELEVATION SUDTOR  
FOR  
HENDERSON COUNTY COURTHOUSE FOR  
HENDERSON COUNTY GEOLOGICAL & HISTORICAL SOCIETY  
HENDERSON COUNTY, NC

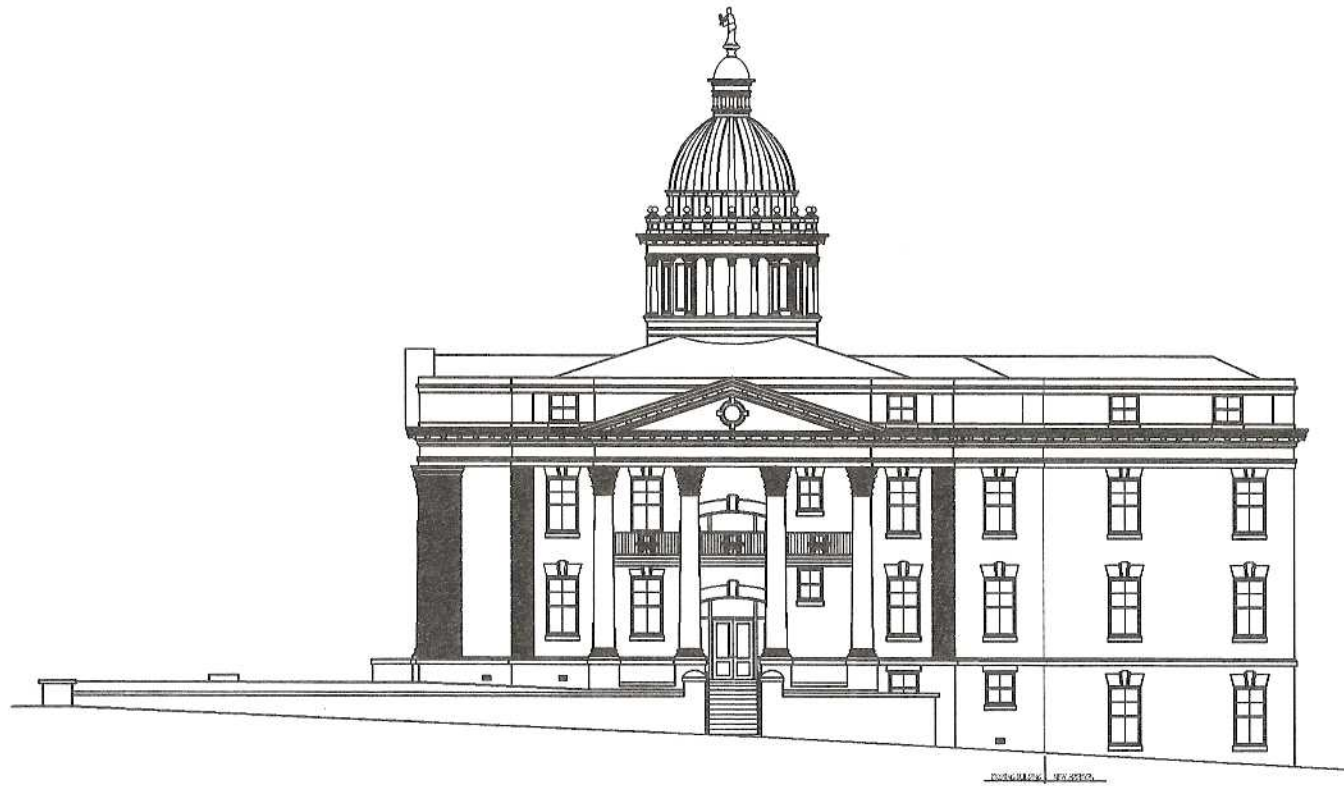
123 NO.

08/6

DATE

DWG NO.

A-1



NORTH ELEVATION

SCALE: 1/8"=1'-0"  
 DRAWN BY: T.W. CANNON

REVISIONS

STUART STEPP - AIA ARCHITECT  
 265616 SINGLETON CENTRE  
 HISTORIC FLAT ROCK NC 28773  
 828-696-4000



ELEVATION STUDIES FOR  
 HENDERSON COUNTY COURTHOUSE FOR  
 HENDERSON COUNTY GENEOLOGICAL & HISTORICAL SOCIETY  
 HENDERSON COUNTY, NC

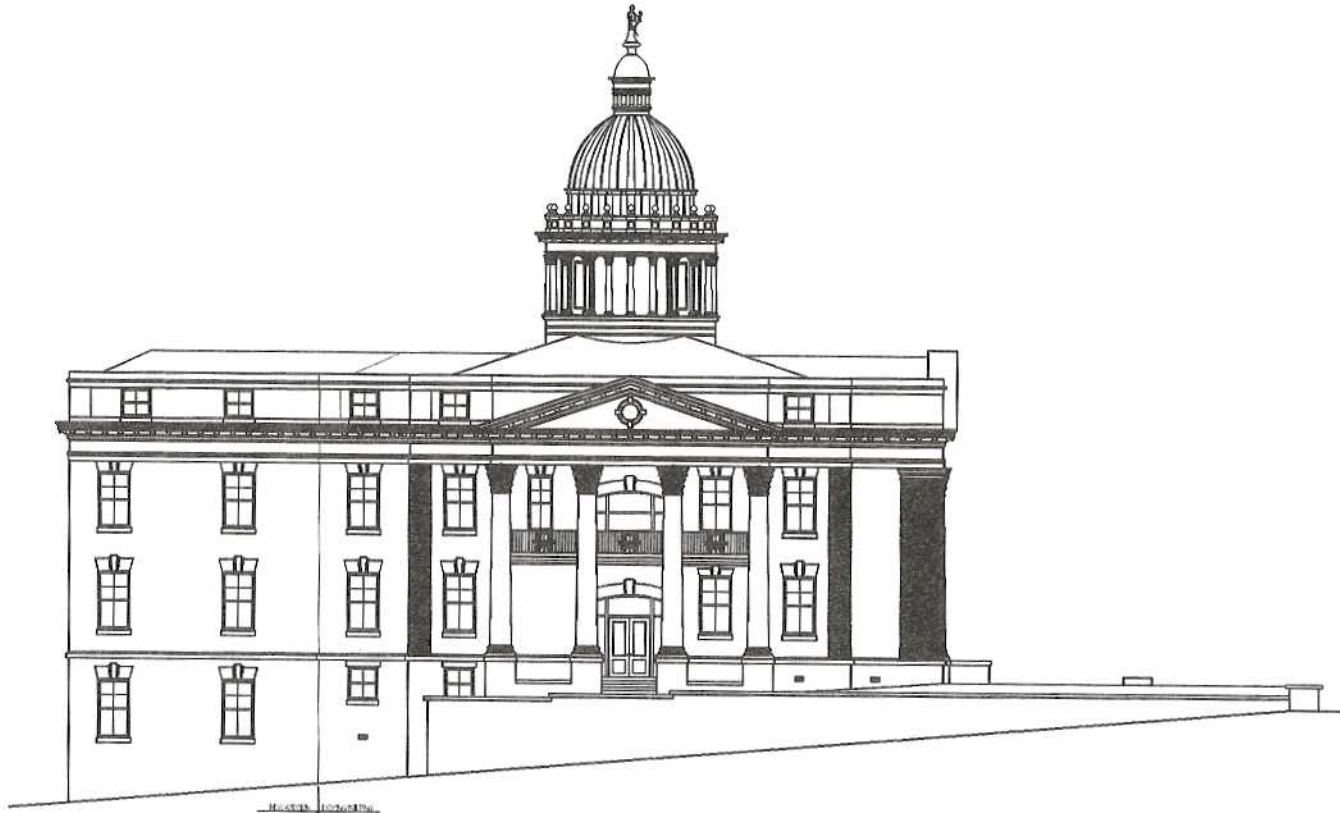
JOB NO.

0516

DATE

DWG. NO.

A-2



SOUTH ELEVATION

SCALE: 1/8" = 1'-0"  
 DRAWN BY: TH. CANNON

REVISIONS


STUART STEPP, AIA ARCHITECT  
 25666 SINGLETON CENTRE  
 HISTORIC FLAT ROCK NC 28751  
 828-696-4000

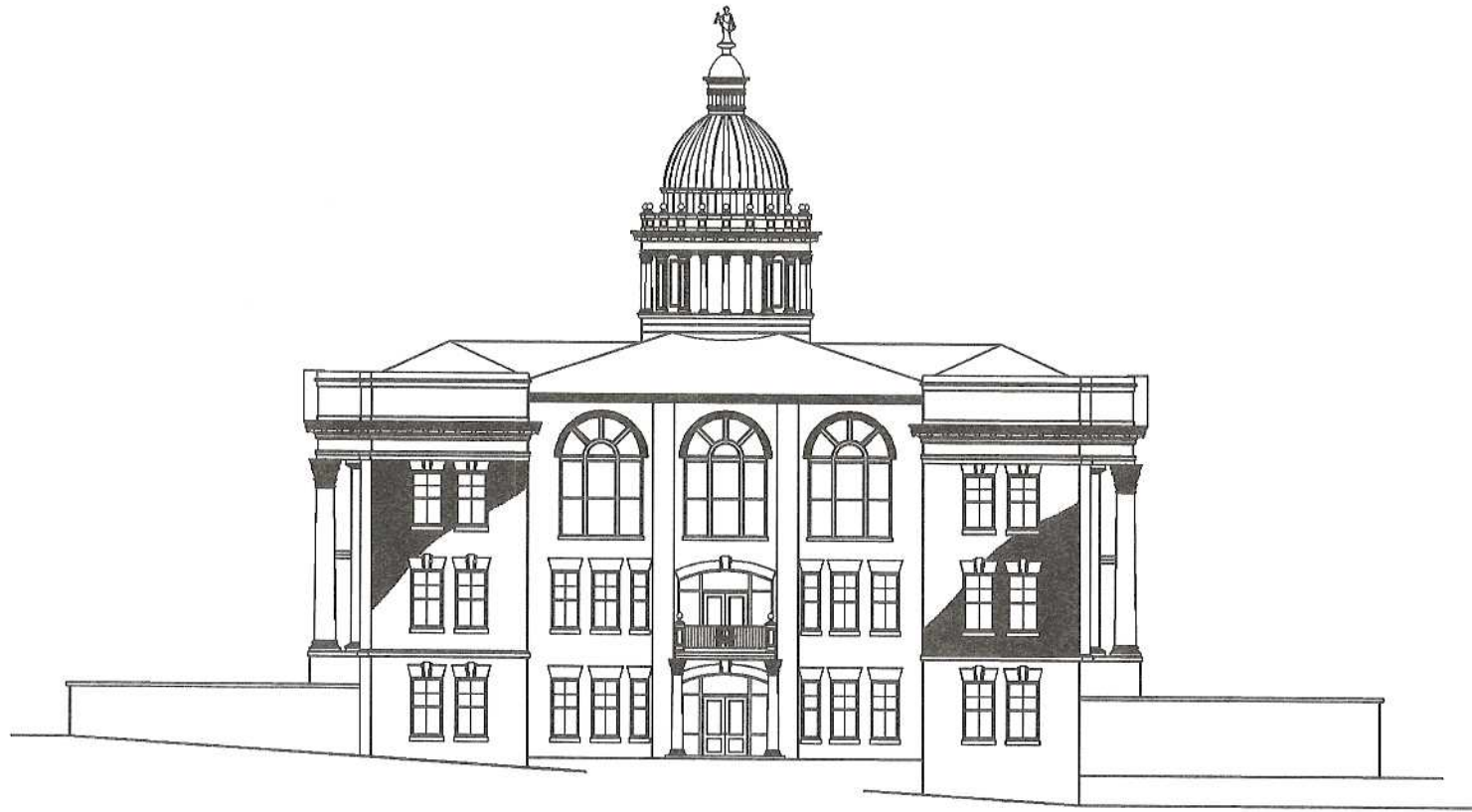


ELEVATION STUDIES FOR  
 HENDERSON COUNTY COURTHOUSE FOR  
 HENDERSON COUNTY GENEOLOGICAL & HISTORICAL SOCIETY  
 HENDERSON COUNTY, NC

JOB NO.  
 0516

DATE

DRWG NO.  
 A-3



REAR ELEVATION

SCALE: 1/8" = 1'-0"  
 DRAWN BY: TIM CANNON

REVISIONS


STUART STEPP, AIA ARCHITECT  
 260819 SINGLETON CENTRE  
 HISTORIC FLAT ROCK NC 28751  
 828-696-4000



ELEVATION STUDIES FOR  
 HENDERSON COUNTY COURTHOUSE FOR  
 HENDERSON COUNTY GENEALOGICAL & HISTORICAL SOCIETY  
 HENDERSON COUNTY, NC

JOB NO.

0916

DATE

DWG NO.

A-4